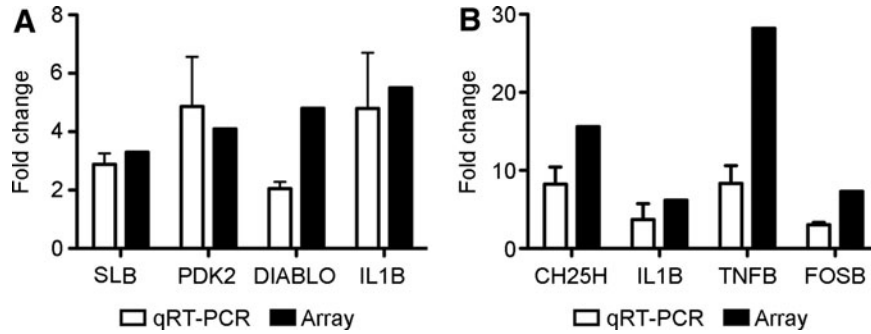


Supplementary Data



SUPPLEMENTARY FIG. S1. qRT-PCR of selected zebrafish genes for the validation of the 4-dpf (**A**) and 6-dpf (**B**) microarrays. All of the qRT-PCR reactions (*white bars*) were performed as technical triplicates, and the expression levels of the analyzed genes were normalized using RNA 18S ribosomal (*RN18S*). Fold change values were calculated by dividing the normalized expression values of the stimulated zebrafish larvae by the normalized expression values of the controls taking into account only the LD/control comparison. Each bar represents the mean and standard error of three biological replicates. Fold change values from microarray analyses are shown (*black bars*) for comparison. *SLB*, somatolactin beta; *PDK2*, pyruvate dehydrogenase kinase, isoenzyme 2; *IL1B*, interleukin 1, beta; *CH25H*, cholesterol 25-hydroxylase; *TNFB*, tumor necrosis factor-beta; *FOSB*, FBJ murine osteosarcoma viral oncogene homolog B; dpf, days postfertilization; LD, lethal dose; qRT-PCR, quantitative reverse transcriptase-polymerase chain reaction.