

Figure S1. Mass spectrum of FA-PEG-Chol. The calculated molecular weight of FA-PEG-Chol is 4142 Da and the mass spectrum was determined by matrix-assisted laser desorption/ionization time of flight mass spectroscopy. The fragments of FA-PEG-Chol were distributed as bell shape centered at 4122 Da, consistent with calculated molecular weight.

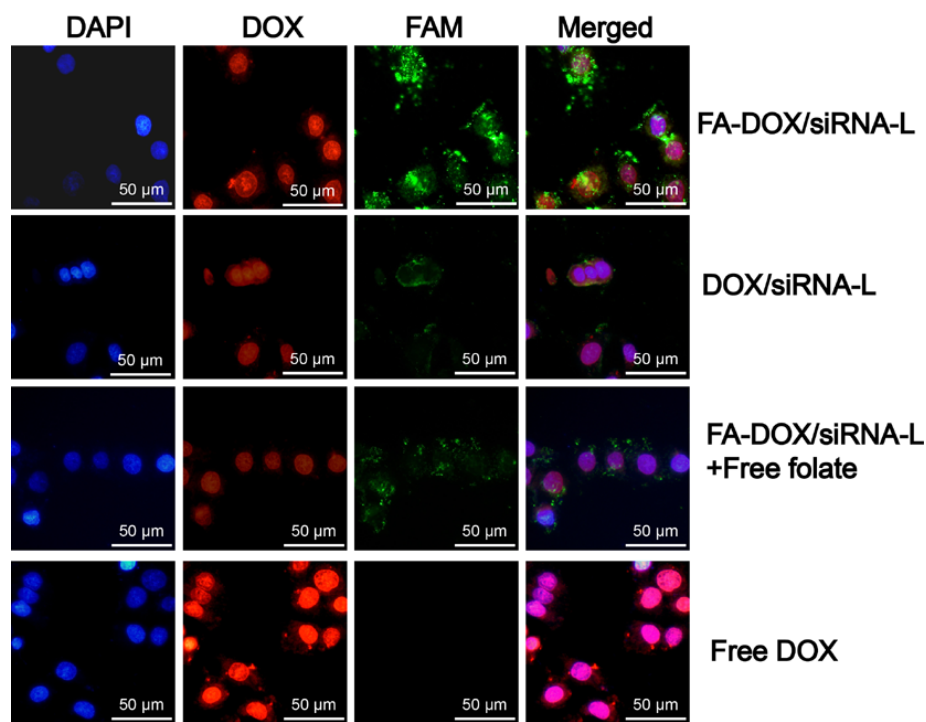


Figure S2. Co-localization of Bmi1 siRNA and DOX in HeLa cells. HeLa cells grown in a monolayer were incubated with free DOX, DOX/siRNA-L, FA-DOX/siRNA-L and for 1 h at 37°C. For folate blocking group, 1 mM free folate was added to the incubation media prior to the addition of FA-DOX/siRNA-L. Bmi1 siRNA was labeled with FAM (Green) and DOX emits red fluorescence by itself. The nucleus was counterstained with DAPI (Blue).