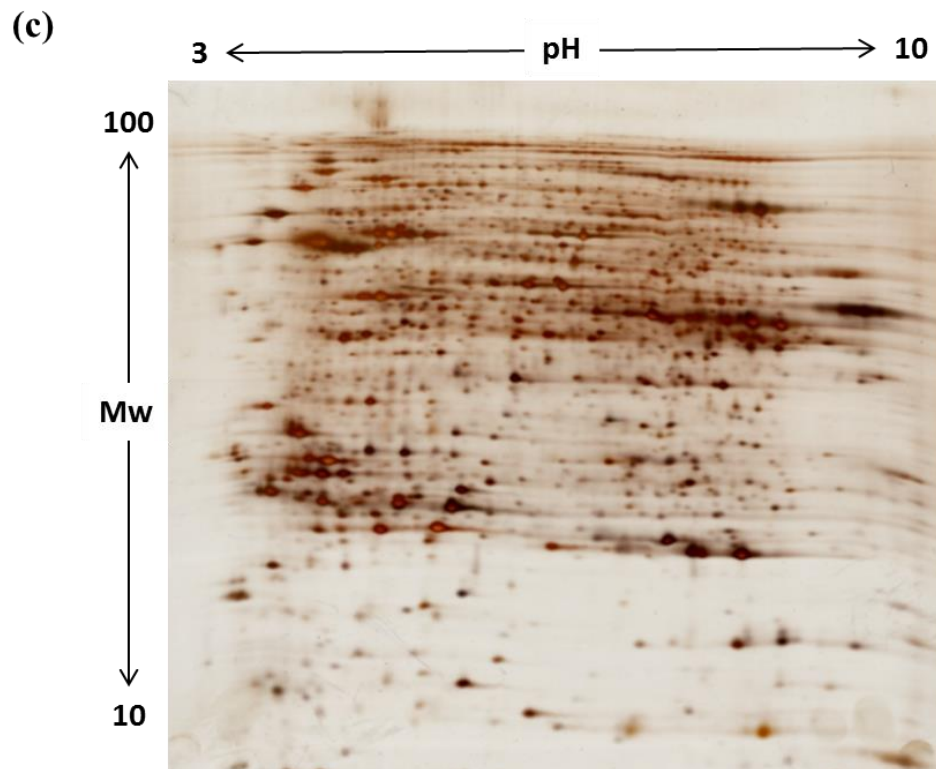


**Figure S2.** Two-dimensional gels stained with silver staining (pH 3-10) for *sta6-1*. Gels showing protein expression profiles of *sta6-1* between different timing points (a) day 14 and (b) day 27, and (c) day 43 during adaptive evolution.



**Figure S2.** (*continued*) Two-dimensional gels stained with silver staining (pH 3-10) for *sta6-1*. Gels showing protein expression profiles of *sta6-1* between different timing points (a) day 14 and (b) day 27, and (c) day 43 during adaptive evolution.