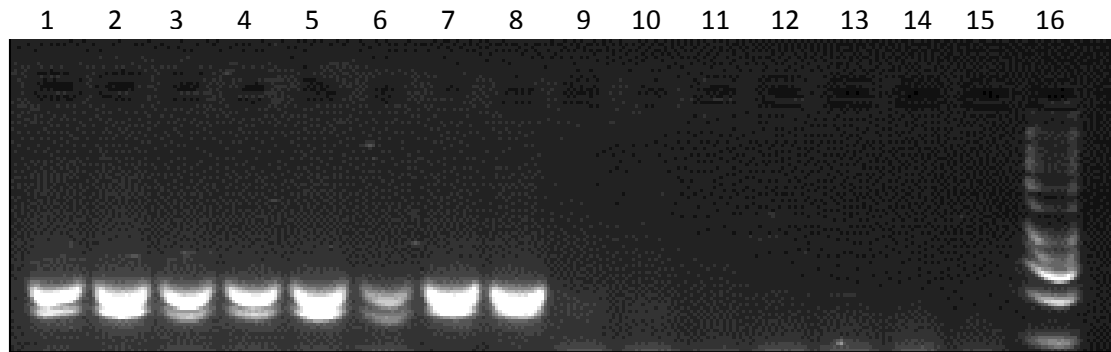
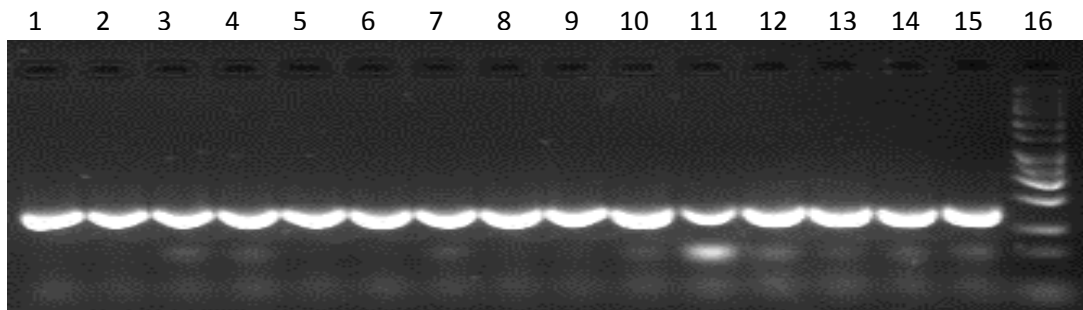


cRNA PCR on *Tpcn2*



cRNA PCR on GAPDH



Lane	Genotype	Tissue cRNA is from
1	Wild Type	Kidney
2	Wild Type	Kidney
3	Wild Type	Retroperitoneal Fat
4	Wild Type	Retroperitoneal Fat
5	Wild Type	Heart
6	Wild Type	Heart
7	Wild Type	Liver
8	Wild Type	Liver
9	Knockout	Kidney
10	Knockout	Kidney
11	Knockout	Retroperitoneal Fat
12	Knockout	Heart
13	Knockout	Heart
14	Knockout	Liver
15	Knockout	Liver
16	Size Standard	

**Figure S1** PCR on RNA from multiple tissues in wild-type and knock-out *Tpcn2* mice. Results confirm that the knock-out mice do not transcribe *Tpcn2*.