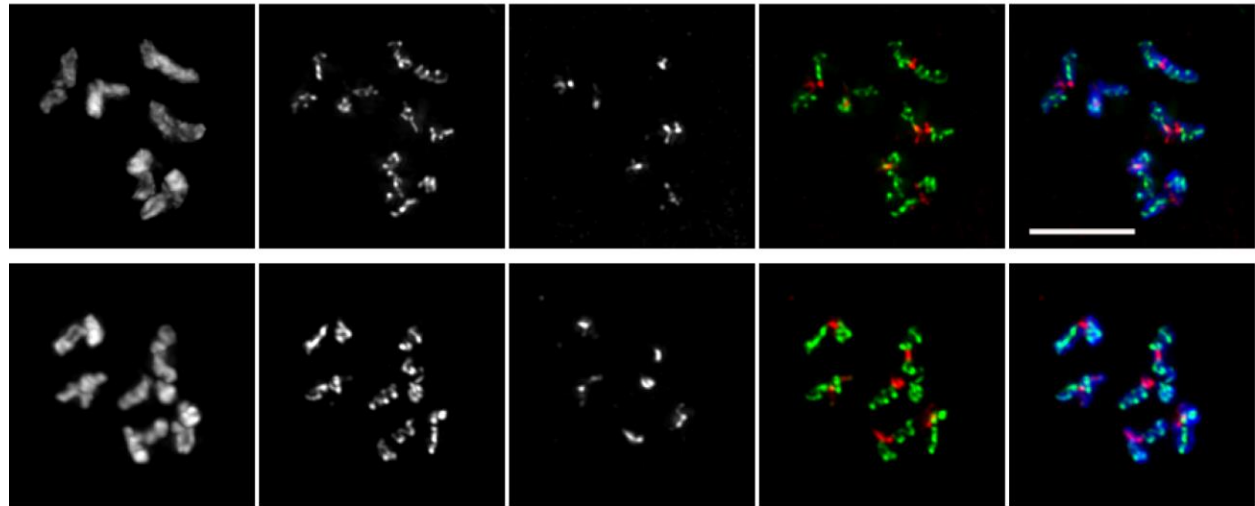




Diplotene



Diakinesis

Figure S2 Wild-type diplotene and diakinesis-stage oocytes, for comparison with Figure 4A and B. Images show chromosomes stained with antibodies against chromosome axis proteins HTP-1/2 and SC central region protein SYP-1. As in [\(Martinez-Perez et al. 2008\)](#), the SYP-1 and HTP-1/2 proteins localize to reciprocal domains as the chromosomes desynapse in diplotene nuclei and maintain reciprocal localization of SYP-1 and HTP-1/2 on bivalents in early diakinesis nuclei. In contrast with the *him-6* mutant, where a subset of bivalents dissociates into univalents during progression through diakinesis, all six bivalents remain associated via chiasmata throughout diakinesis in wild type. Scale bar = 5 μ m.