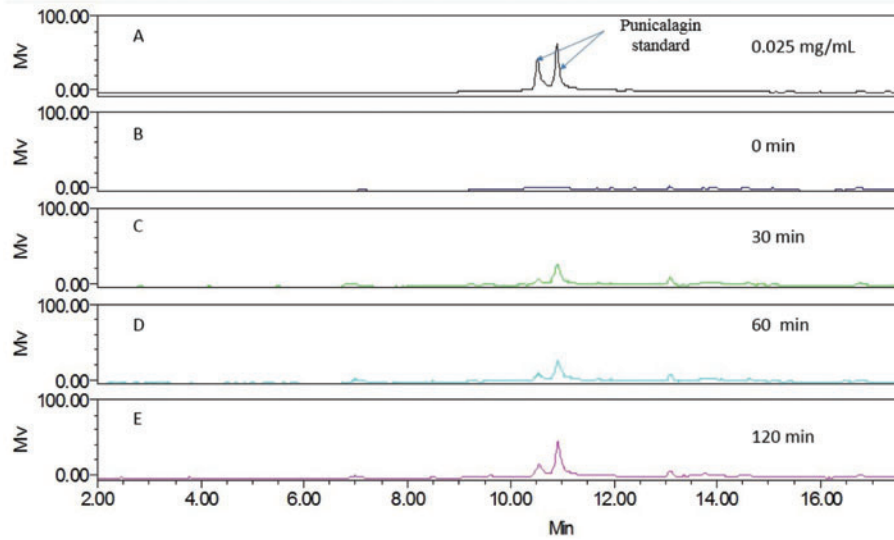


Serum PU concentration



SUPPLEMENTARY FIG. S1. Serum PU concentration. UPLC analysis of serum PU. (A) 0.025 mg/ml PU standard; (B) Rat serum without PE administration; (C) Rat serum PU after 150 mg/kg PE administration at 30 min; (D) Rat serum PU after 150 mg/kg PE administration at 60 min; (E) Rat serum PU after 150 mg/kg PE administration at 120 min. PU standard curve: $y=0.0064x-0.0179$, the area of peak E is 5.712, the concentration of serum PU at 120 min is $17.3 \mu\text{g/ml}$ after calculation. PE, pomegranate extract; PU, punicalagin.