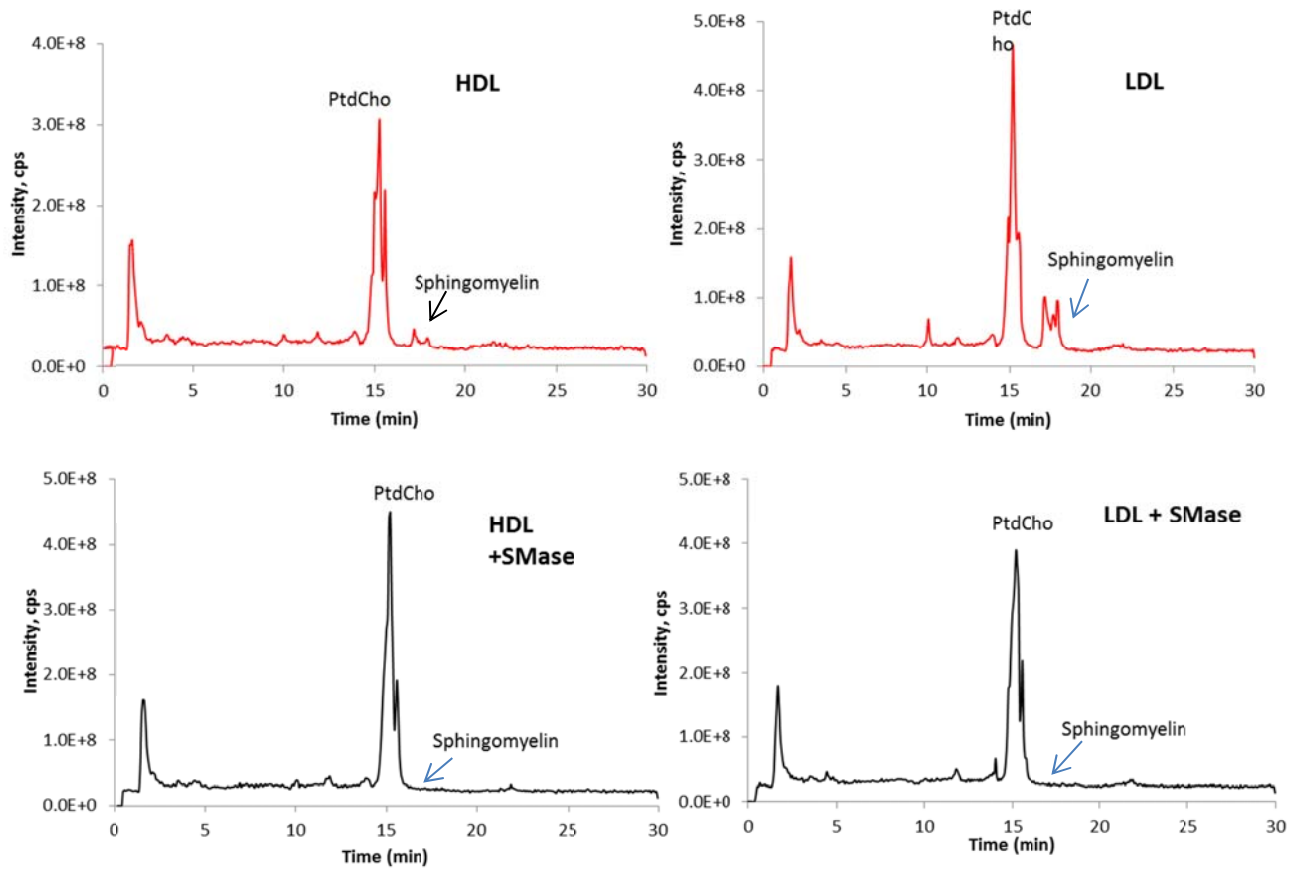


Supplement Fig. S1

LC/MS analysis of lipoprotein phospholipids before and after treatment with sphingomyelinase.

HDL or LDL (100 μg protein) was treated with sphingomyelinase from *B. cereus* (0.05 units) for 1 h at 37°C, and the total lipids were extracted and analyzed by LC/MS as described in the text. The total ion current is shown. There was a complete loss of sphingomyelin after the sphingomyelinase treatment. Similar results were obtained with VLDL (results not shown)



Supplement Fig. S2: Molecular species composition of PtdCho.

Aliquots of VLDL, LDL, and HDL (100 μg protein) were first treated with sphingomyelinase (0.05 units) for 1h. sphingomyelinase-treated and untreated samples were then incubated with EL (200 μl EL-conditioned medium) for 4h. Control samples were incubated with GFP-control medium. The lipids were extracted and analyzed for molecular species of PtdCho by LC/MS as described in Methods. The values shown are mean \pm SD of 3 analyses.

