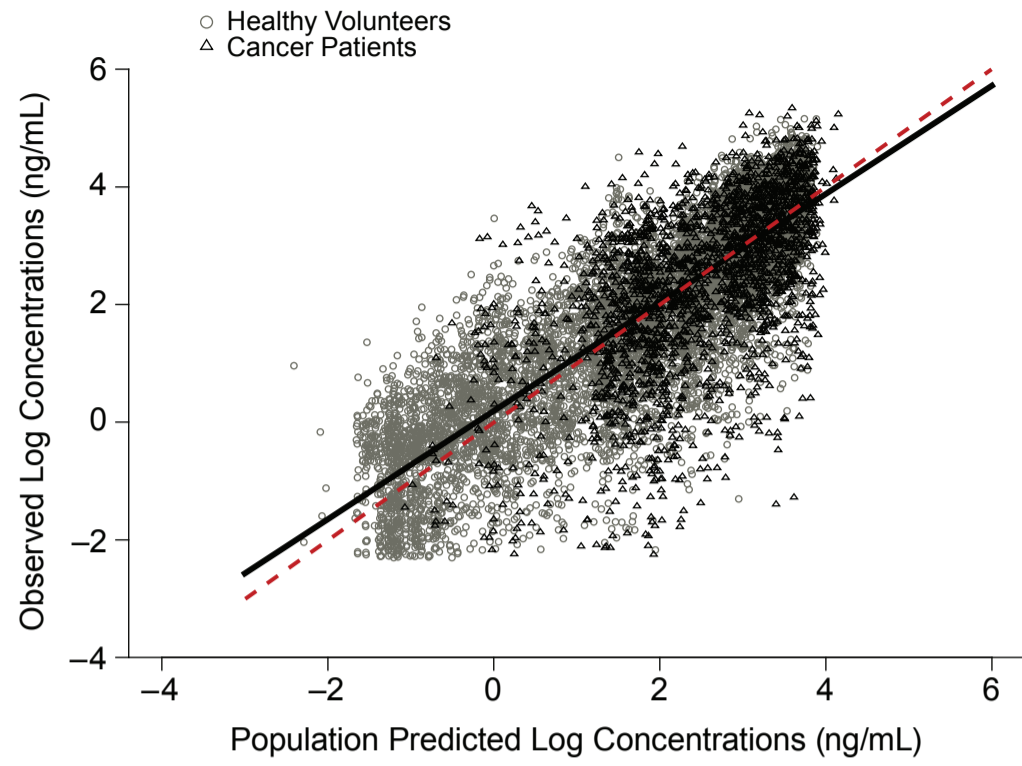
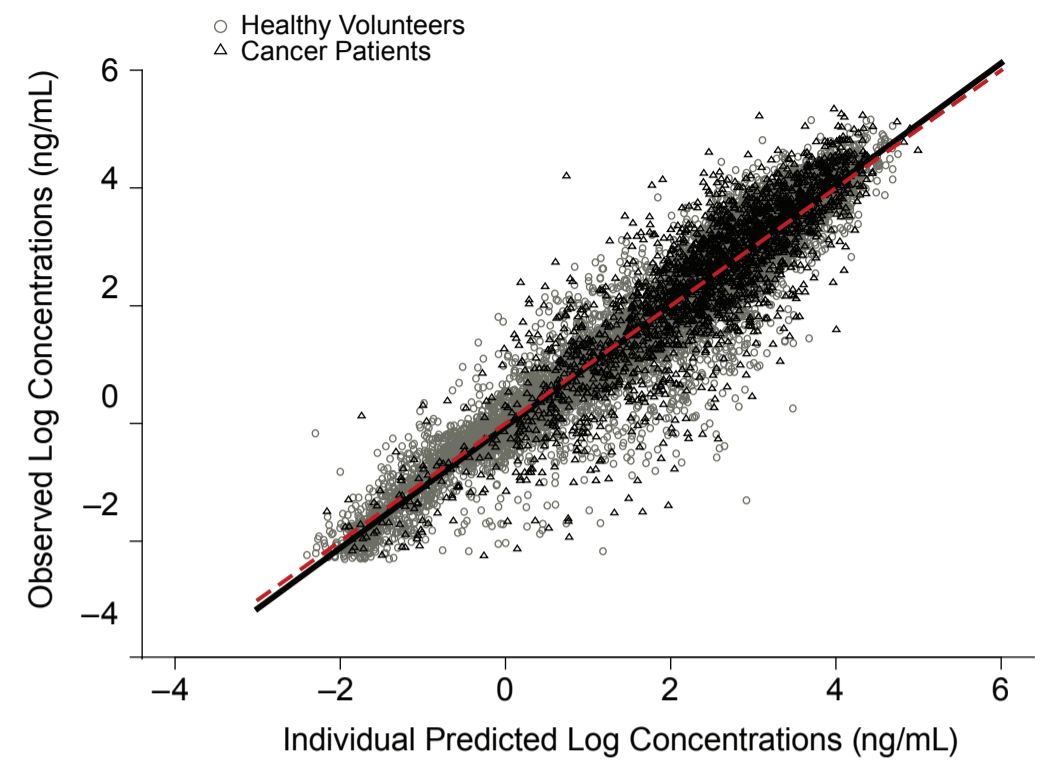


**Figure S1**

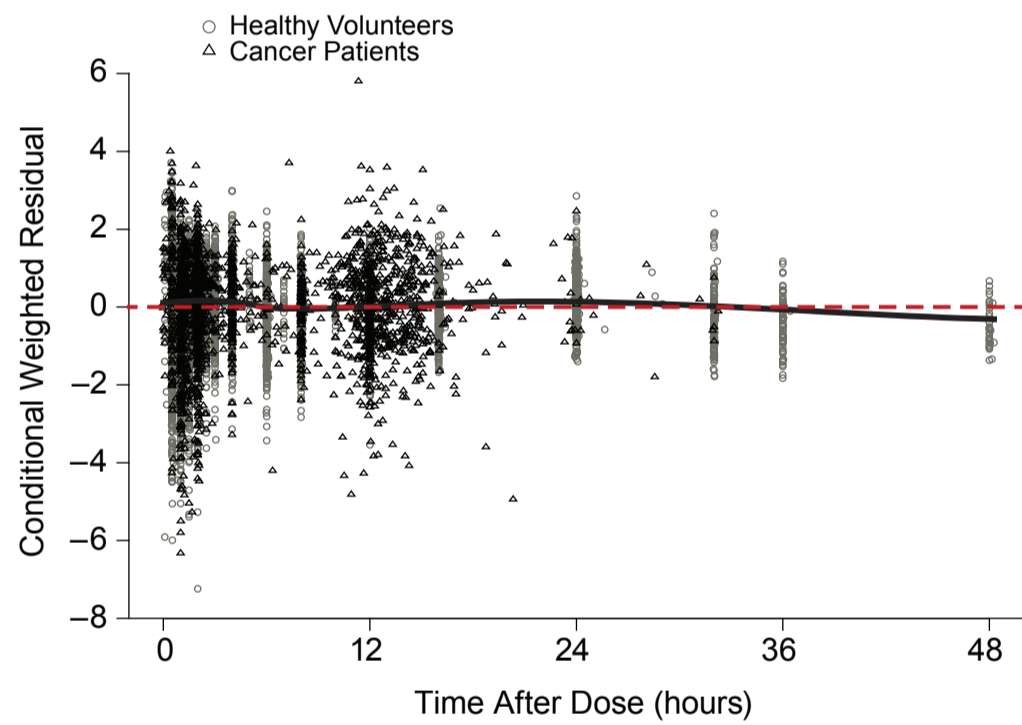
**(A)** Scatter plot of the log-transformed observed concentrations versus the log-transformed population predicted concentrations. The dashed red line represents the line of identity and the solid black line depicts smooth (LOESS) trend for the entire population.



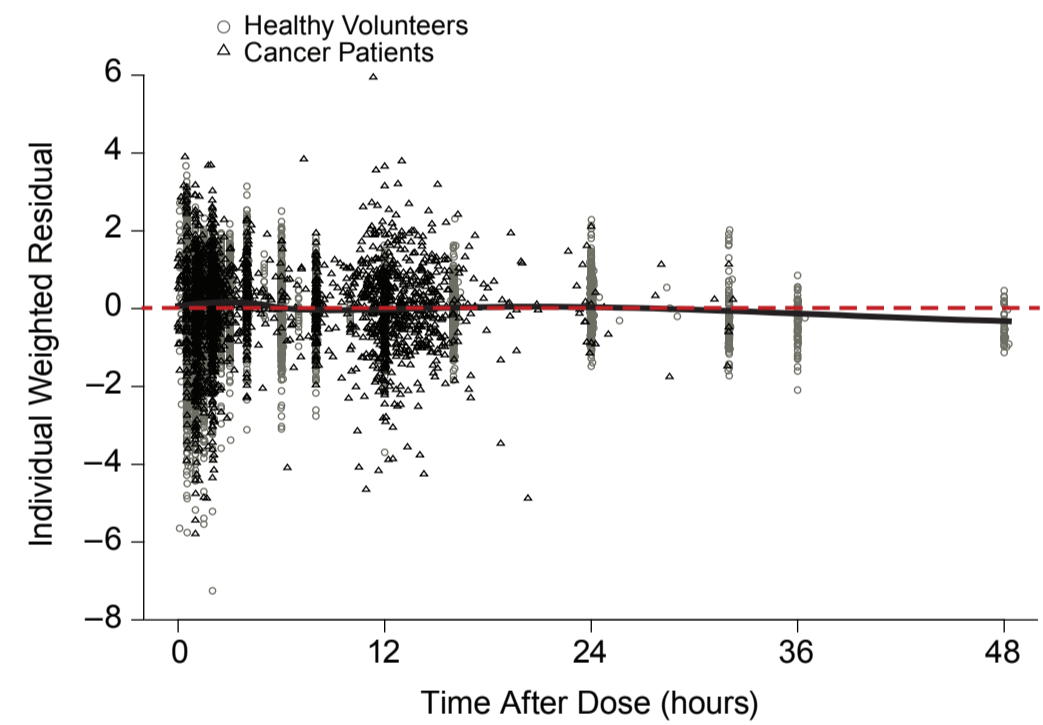
**(B)** Scatter plot of the log-transformed observed concentrations versus the log-transformed individual predicted concentrations. The dashed red line represents the line of identity and the solid black line depicts smooth (LOESS) trend for the entire population.



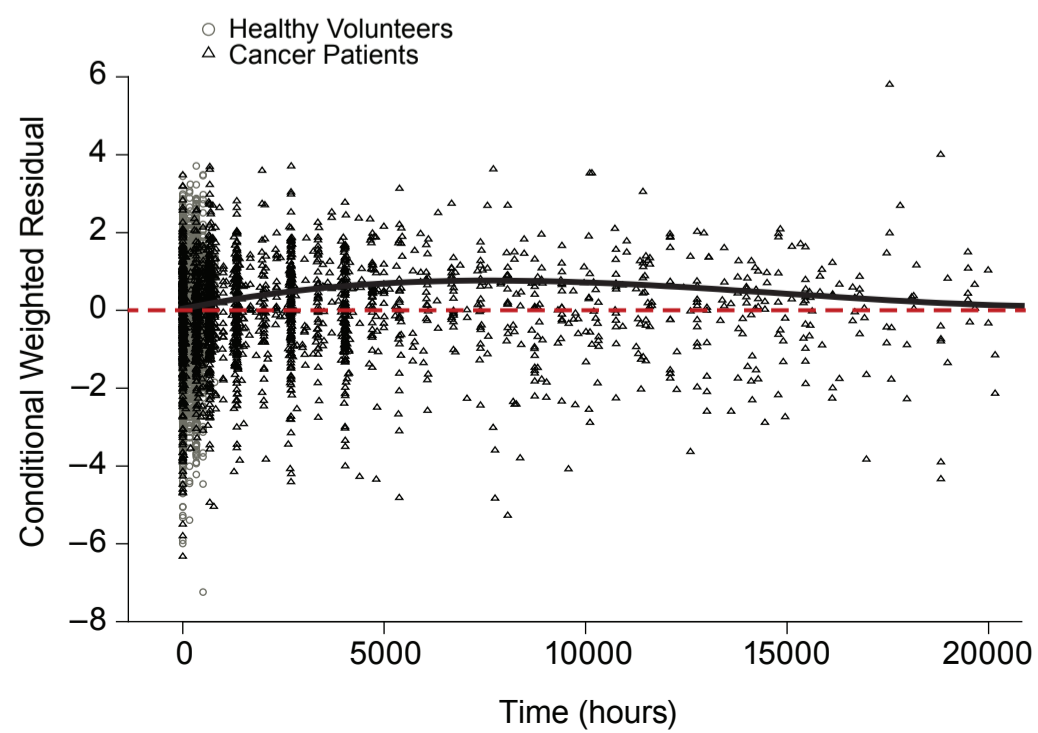
**(C)** Scatter plot of the conditional weighted residuals versus time after dose. The dashed red line represents the line of null value and the solid black line depicts smooth (LOESS) trend for the entire population.



**(D)** Scatter plot of the individual weighted residuals versus time after dose. The dashed red line represents the line of null value and the solid black line depicts smooth (LOESS) trend for the entire population.



**(E)** Scatter plot of the conditional weighted residuals versus time. The dashed red line represents the line of null value and the solid black line depicts smooth (LOESS) trend for the entire population.



**(F)** Scatter plot of the individual weighted residuals versus time. The dashed red line represents the line of null value and the solid black line depicts smooth (LOESS) trend for the entire population.

