



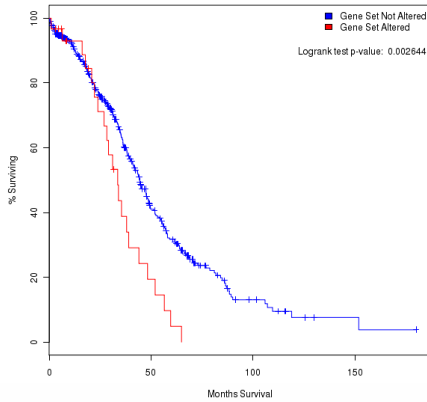
Gene Set / Pathway is altered in 5.2% of all cases.

Ovarian Serous Cystadenocarcinoma (TCGA, Provisional) / All Tumors: (580) / User-defined List / 1 gene

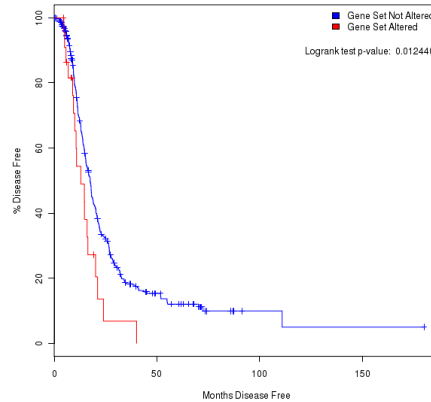
OncoPrint



Overall Survival



Disease Free Survival



Protein Levels (top) and Phosphorylation (bottom) Changes

Antibody Type:	Protein	Target	Residue	Ave. Abundance		p-value	Plot
				Unaltered	Altered		
protein_level	TGM2			0.03	-0.48	1.48e-6	
	CASP7			0.04	-0.39	4.59e-6	
	MSH2	cleavedD198		-0.07	1.01	4.81e-6	
	LCK			0.06	-0.90	1.48e-5	
	MSH6			-0.07	1.06	1.79e-5	
	PTCH1			0.04	-0.71	4.08e-5	
	EGFR			0.04	-0.48	2.36e-4	
	RBM3			0.06	-0.79	2.64e-4	
	CCNB1			-0.05	0.69	2.70e-4	
	ANKK1			0.06	-0.80	4.66e-4	
	INP4B			0.03	-0.53	6.57e-4	
	BAK			0.03	-0.60	8.77e-4	
	NF2			0.05	-0.77	0.001	
	IGFBP2			-0.04	0.55	0.003	
	PTGS2			0.04	-0.44	0.004	
	XIAP			0.03	-0.49	0.004	
	STMN1			-0.02	0.49	0.005	
	MAPK9			0.03	-0.54	0.008	
	BID			0.04	-0.49	0.008	
	CDK1			-0.03	0.55	0.008	
	XRCC1			-0.05	0.86	0.009	
	NCOA3			-0.05	0.64	0.009	
	VASP			0.04	-0.52	0.009	
	CHEK1			-0.03	0.49	0.010	
	RAB25			0.03	-0.23	0.011	
	BCL2L1			0.04	-0.53	0.012	
	IGF1R			-0.03	0.49	0.013	
	PIK1			0.03	-0.30	0.014	
	RAD51			-0.03	0.40	0.015	
	PRKCA			0.02	-0.39	0.015	
	CHEK2			-0.03	0.35	0.016	
	PTK2			0.03	-0.44	0.017	
	TP53			-0.03	0.46	0.019	
	NOTCH3			-0.04	0.58	0.019	
	TP53BP1			-0.04	0.52	0.022	
	GSK3A/GSK3B			-0.03	0.41	0.026	
	BCL2L1			0.02	-0.37	0.026	
	CD49			0.03	-0.41	0.026	
	MAPK1			0.02	-0.44	0.034	
	GATA3			0.03	-0.38	0.039	
GAB2			0.02	-0.38	0.043		
BRCC1			-0.02	0.28	0.045		
CDH1			0.03	-0.53	0.048		

Antibody Type:	Protein	Target	Residue	Ave. Abundance		p-value	Plot
				Unaltered	Altered		
phosphorylation	WWTR1	pS89		-0.07	0.96	4.73e-5	
	FOXO3	pS318		0.03	-0.58	3.50e-4	
	ARAF	pS299		0.04	-0.58	3.75e-4	
	IRS1	pS807		-0.05	0.71	0.004	
	SHC1	pY317		0.03	-0.46	0.004	
	CHEK2	pT68		-0.02	0.45	0.013	
	JUN	pS73		-0.04	0.53	0.016	
	CHEK1	pS345		-0.02	0.39	0.022	
	EIF4EBP1	pT170		-0.03	0.50	0.037	
	RPS6KA1	pT359		-0.03	0.40	0.043	