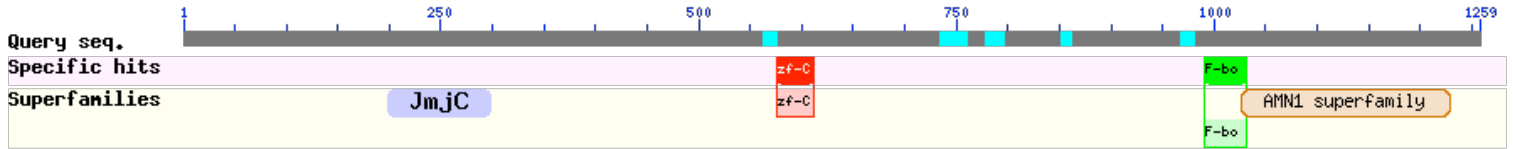
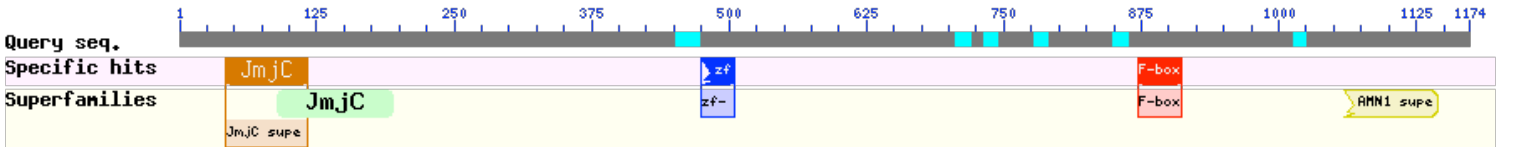


Fig. S1

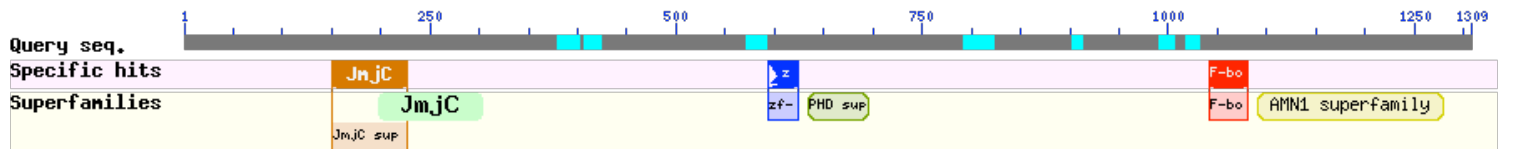
G *Xenopus laevis* KDM2B (NP_001085840.1)



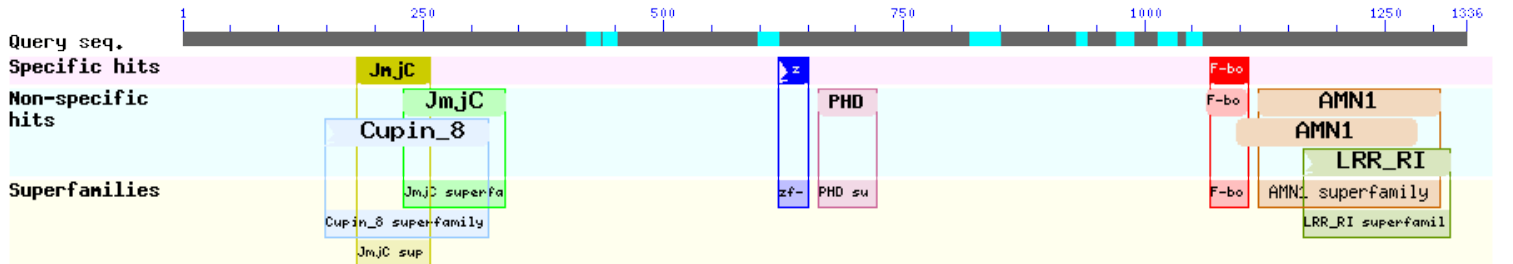
H *Gallus gallus* KDM2B isoform X25 (XP_004945621.1)



I *Mus musculus* KDM2B isoform 1 (NP_001003953.1)



J *Homo sapiens* KDM2B isoform A (NP_115979.3)



K *Ciona intestinalis* KDM2 (XP_423678.3)

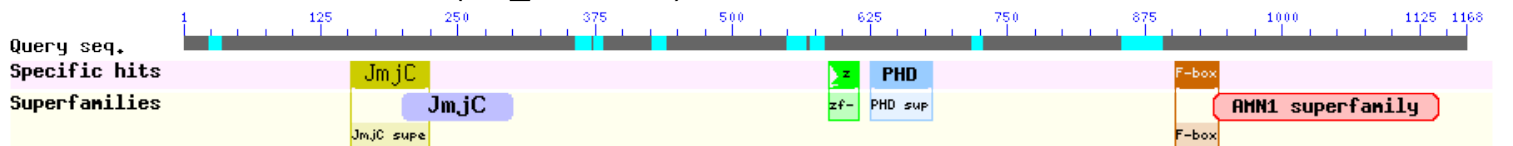
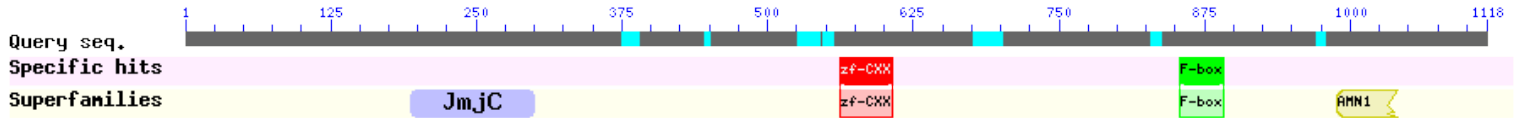
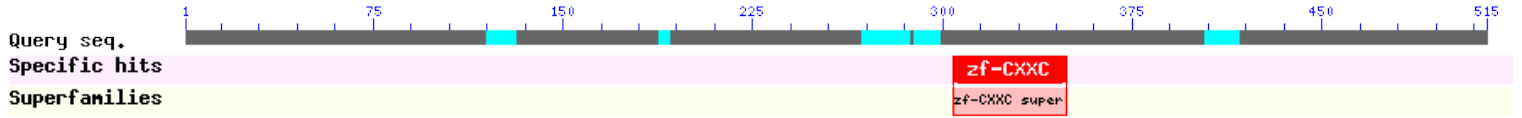


Fig. S1 (cont.)

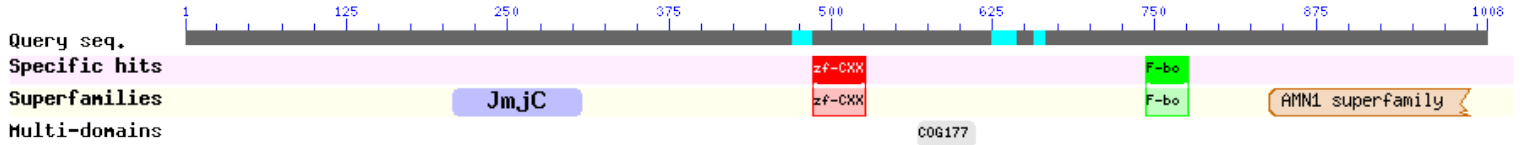
L *Strongylocentrotus purpuratus* KDM2B-like (XP_780290.3)



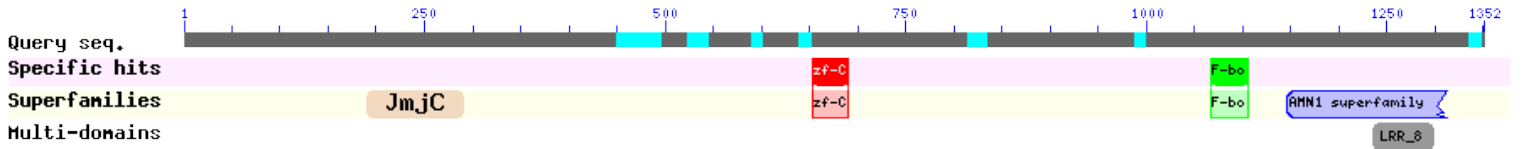
M *Strongylocentrotus purpuratus* KDM2A-like (XP_003731780.1)



N *Tribolium castaneum* hypothetical protein TcasGA2_TC015153 (EFA05058.1)



O *Anopheles gambiae* KDM2 (XP_321169.5)



P *Drosophila melanogaster* KDM2 isoform B (AAF54335.2)



Q *Caenorhabditis elegans* JHDM-1, isoform b (NP_498419)

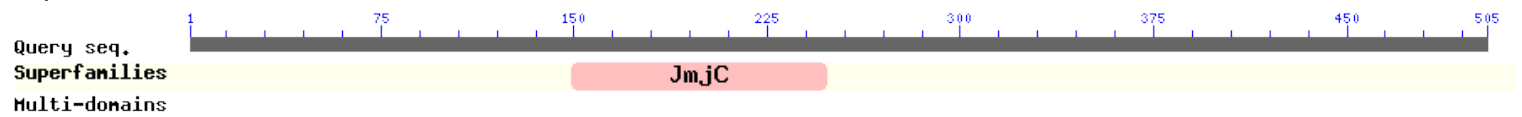


Fig. S1 (cont.)

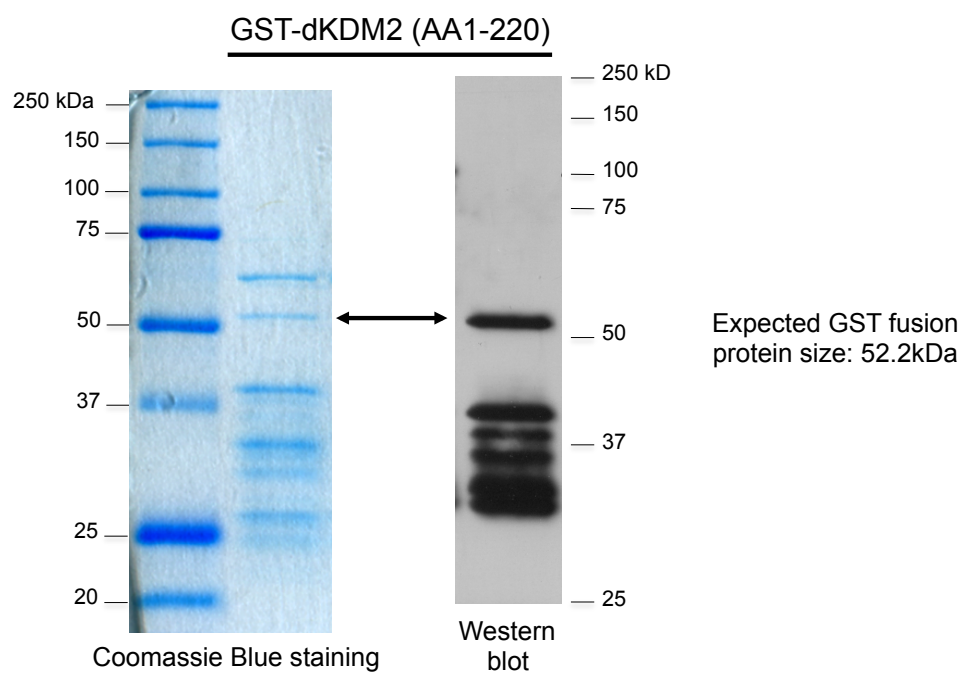


Fig. S2

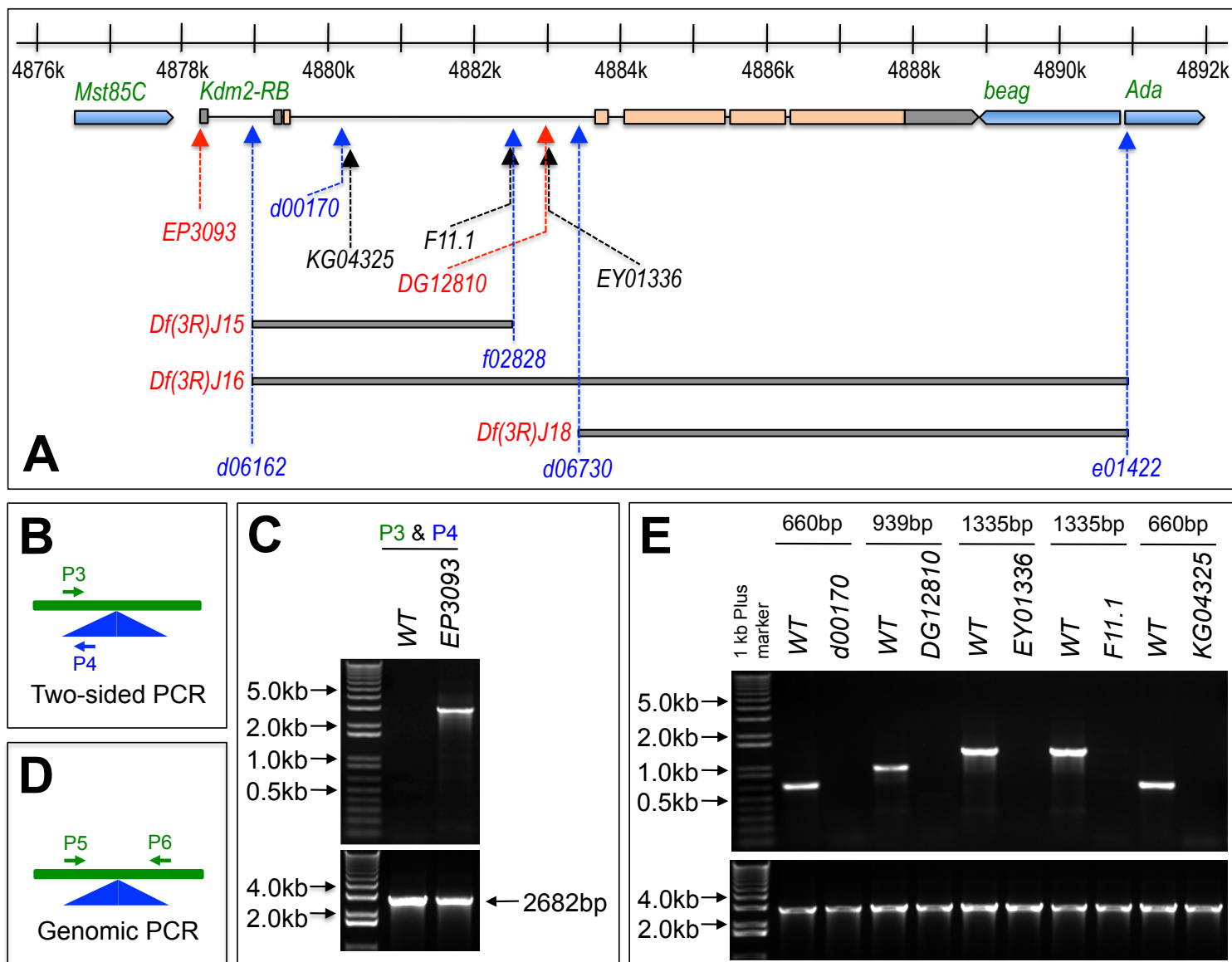


Fig. S3

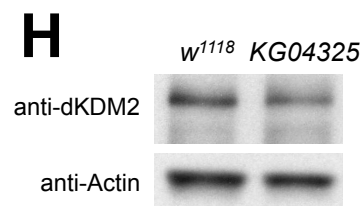
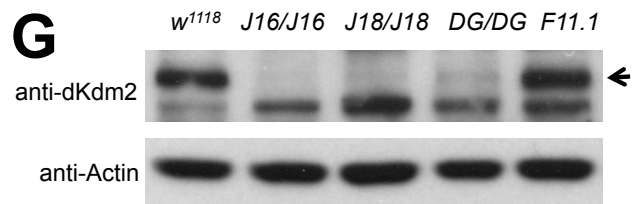
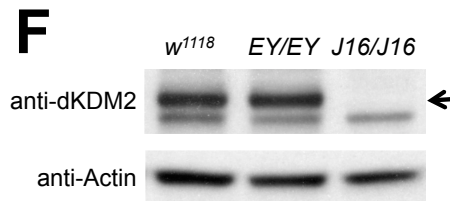
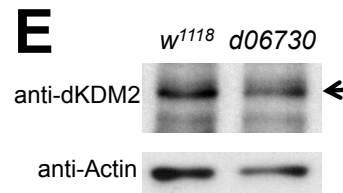
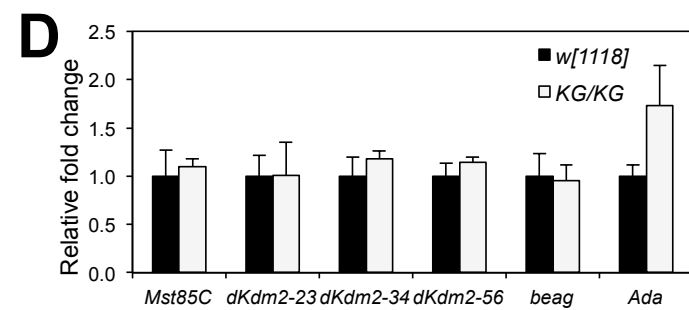
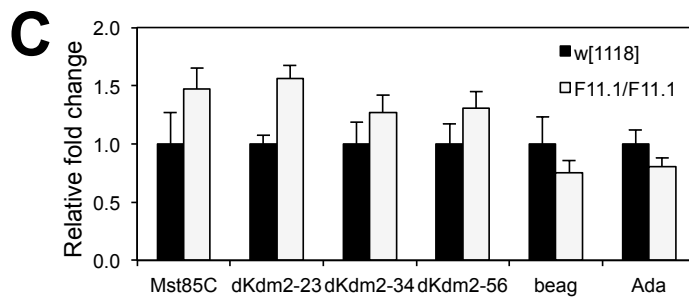
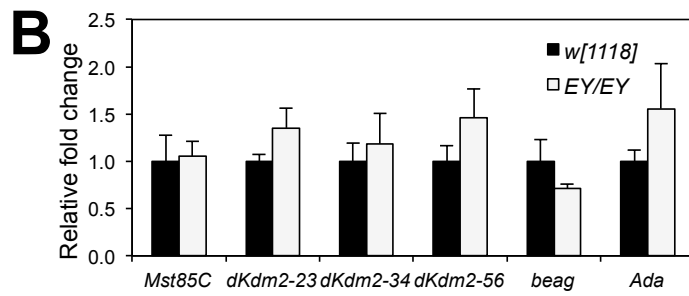
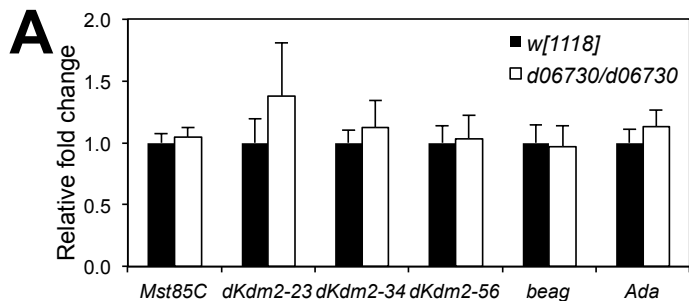


Fig. S4

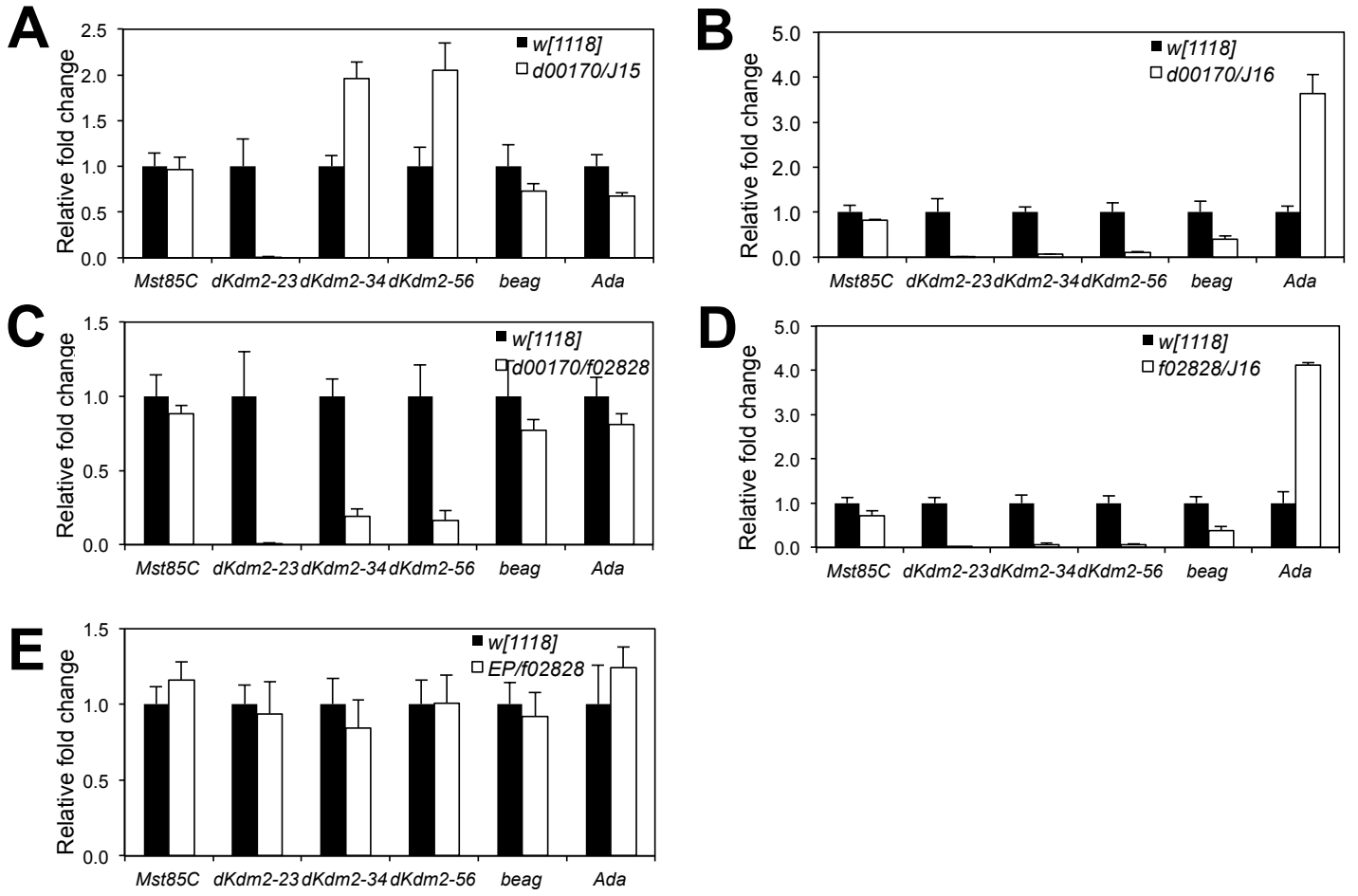
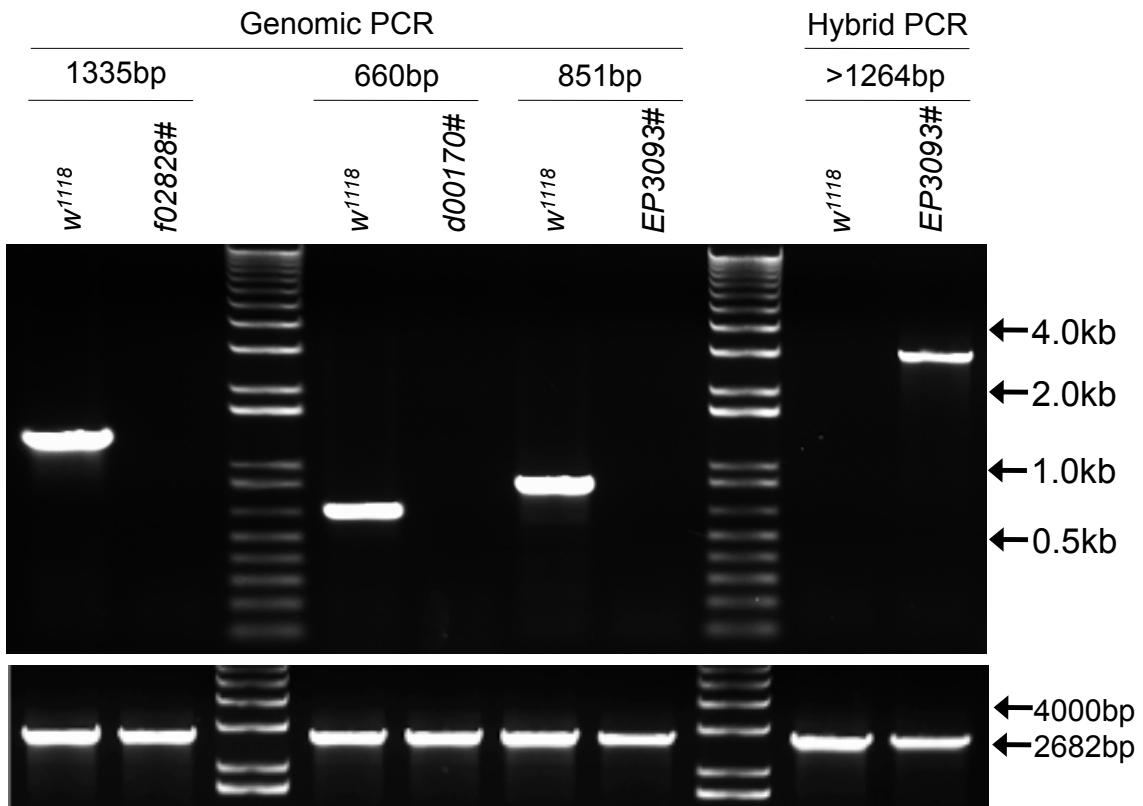
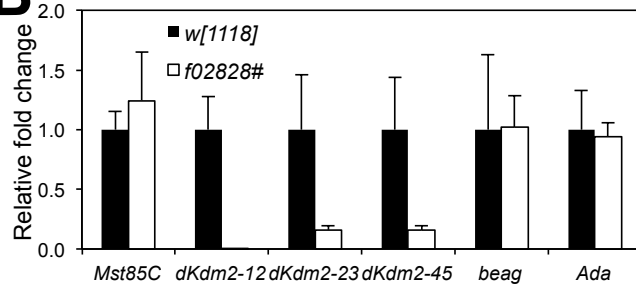
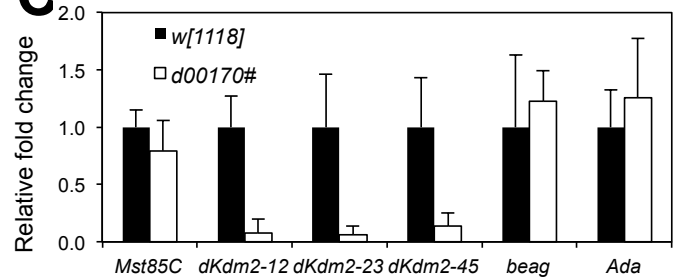
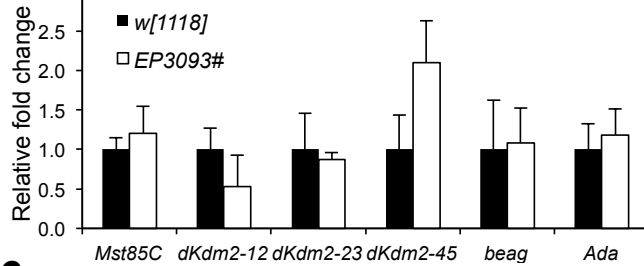
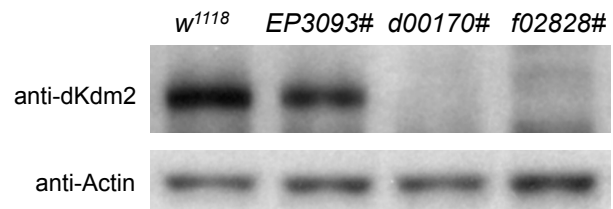


Fig. S5

A**B****C****D****E****Fig. S6**