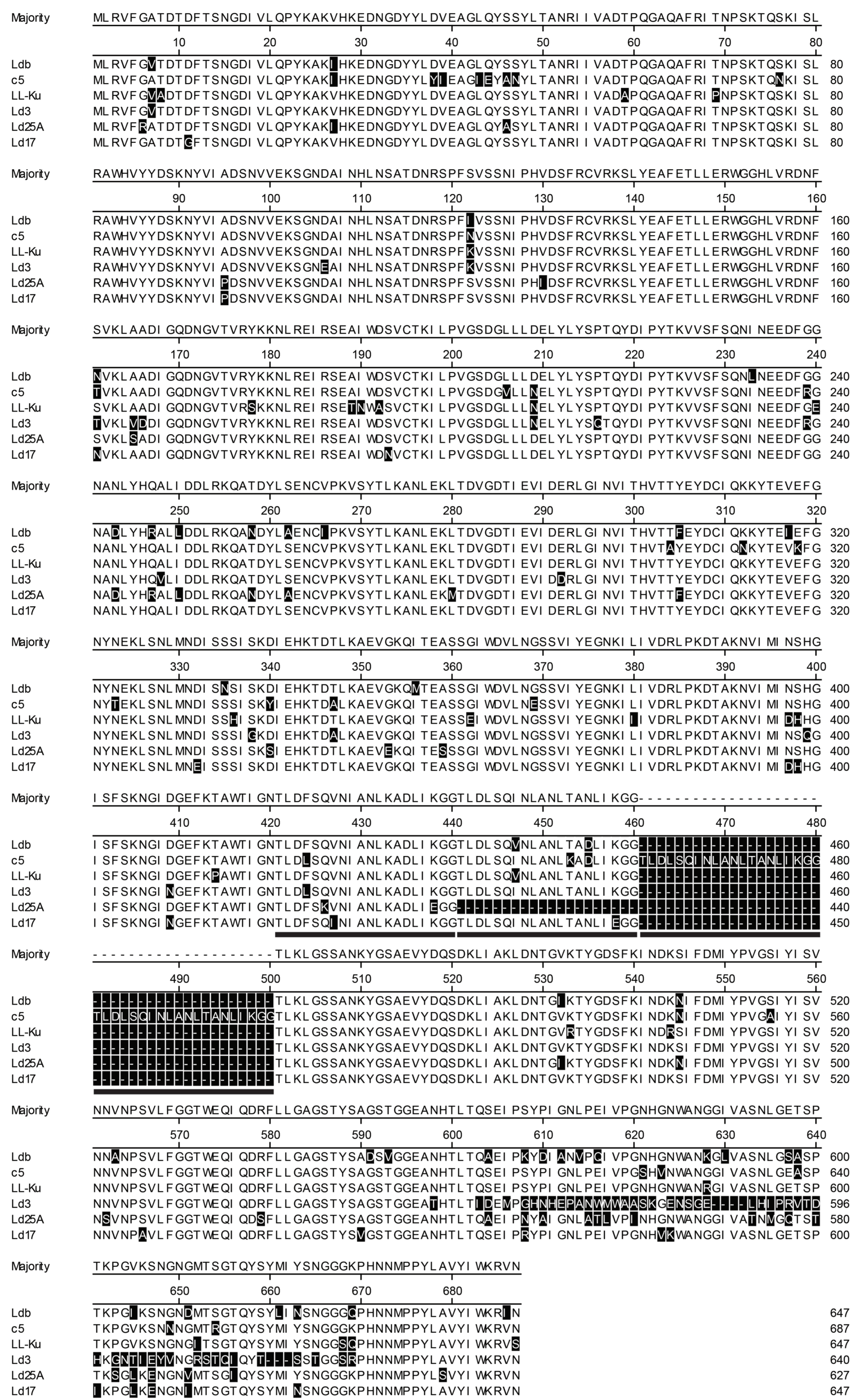


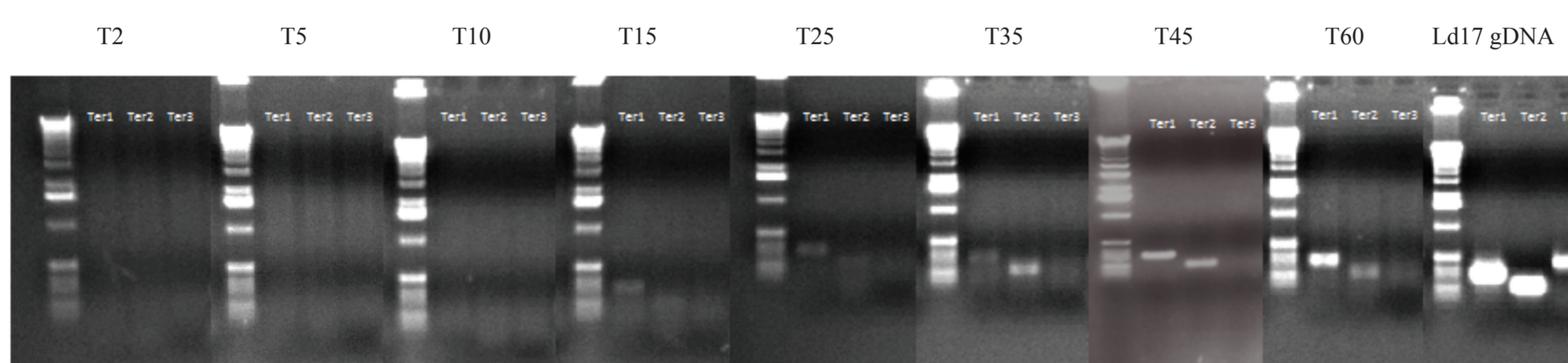
MEME motif analysis of nucleotides upstream of start codons of all Ld25A ORFs confirm that the Shine-Dalgarno sequences follow the normal consensus sequences.

Supplemental Fig. 2



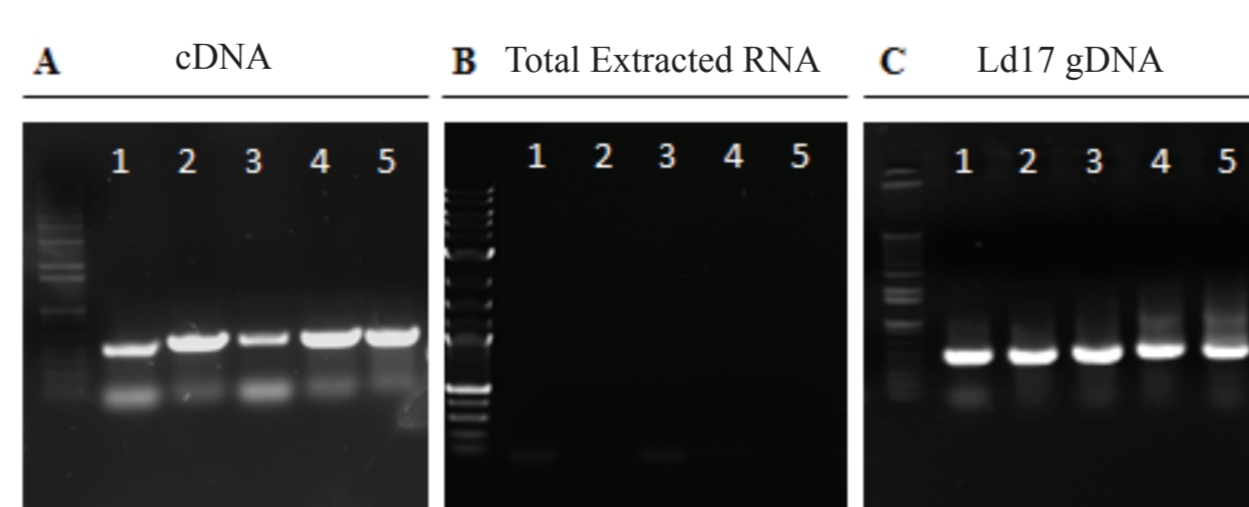
ClustalW alignment of 6 *Lb. delbrueckii* phage antireceptors: Ldb, c5, Ld3, Ld17, Ld25 (*Lb. delbrueckii* subsp. *bulgaricus*) and LL-Ku (*Lb. delbrueckii* subsp. *lactis*). Amino acid residues are shaded where they differ from the consensus. Repeat regions are underlined.

Supplemental Fig. 3



RT-PCR Products for Ter1, Ter2 and Ter3. Time (mins) post infection is indicated above each gel image. Products amplified from phage genomic DNA control are present on the rightmost panel.

Supplemental Fig. 4



Confirmatory PCRS on (A) cDNA to confirm product amplification in absence of a potential terminator sequence (left panel), (B) on total extracted RNA to ensure products were not amplified from residual DNA after Dnase treatment, (C) on Ld17 genomic DNA to ensure primer specificity. Primers used; Lane 1: TerL and TerF; Lane 2: MHF and MHR; Lane 3: TMPF and TMPR; Lane 4: GPDF and GPDFR; Lane 5: ANTF and ANTR (primer sequences can be found in Table 2).