

Figure S1: Effects of bacillaene on vegetative growth and fruiting body formation of *M. xanthus*

M. xanthus vegetative cells were grown to mid log phase and spotted on top of bacillane, methanol or MMC buffer that were spotted onto CYE Agar plates. Pictures were taken after 48h at 10x magnification. To study the effect on fruiting body formation cells were spotted onto CFL agar plates with and without addition of bacillane, methanol or MMC. Pictures were taken after 48h or 72h at 30x magnification. Bar = 0.5 cm.

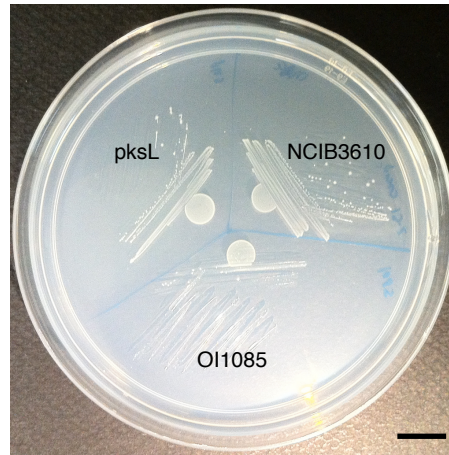


Figure S2: *Bacillus subtilis* spores germinate on CFL agar plates.

Mature and purified spores of *B. subtilis* strains NCIB3610, *pksL* and OI1085 were made as described in Materials and Methods. 10 ml aliquots of the spore suspensions were spotted onto CFL agar plate, streaked and incubated at 37C for 48h. Bar = 1cm.

Table S1: Primers and Plasmids

PRIMERS

1270 GTCTCAGGAGAATCTATTA AACTGC

1271 CAATTCGCCCTATAGTGAGTCGTTGCATAAATGACAAAGGGTATATATC

1272 CCAGCTTTTGTCCCTTTAGTGAGTGGACAGCATATCCAGCTTGGTG

1273 GCTGTACGCTTCAGCGGCAAGA

1274 TTTGATGTCCGCGGTCCAAGTGT

1275 CAATTCGCCCTATAGTGAGTCGTTTTTTAACGATAATGTGAGTTGTTTTCG

1276 CCAGCTTTTGTCCCTTTAGTGAGAAGTGCATTCAGACACAGGGGCT

1277 GTTCTGCCGGCCTTTCAAGCTG

PLASMIDS

pAC225 cat amp (generous gift from Amy Camp, Mount Holyoke College)

pDG1515 tet amp