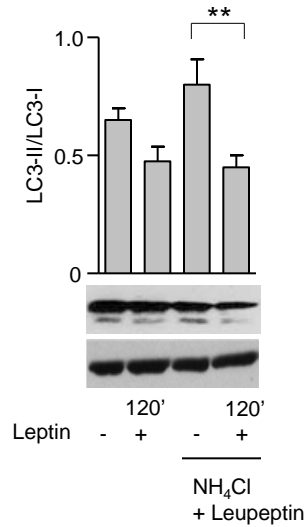


A



Supplemental Fig.1 Leptin specifically reduces autophagy in BAF/3-hLepRb⁺ cells

Densitometric analysis of LC3-II/LC3-I in BAF/3-hLepRb⁺ cells. Cells were stimulated or not with leptin (100 ng/ml), in presence or absence of lysosomal protease inhibitors NH₄Cl (20 mM) and leupeptin (100 μM). LC3-II was also normalized against actin. Densitometric analysis represents the mean ± S.E.M. of at least three experiments one representative out of three independent experiments (** $p < 0.03$).