

Supplemental Figure Legends

Supplemental Figure I. Representative fluorescence micrographs (x400) showing GFP-labeled IL8RA/B-ECs in frozen lung section and blood smear of MCT treated rats 24 hrs after transfusion of IL8RA/B-ECs. It is not clear whether the GFP cells were located in blood vessels or lung parenchyma due to the low resolution of the unfixed tissue. Yellow stained cells are GFP-positive cells. Blue stained nuclei are DAPI-labeled nuclei. GFP cells could be seen in blood smears, but not other tissues, including heart, kidney, liver and brain.

Supplemental Figure II. Effects of IL8RA/B-EC, Null-EC, or vehicle transfusion on MCT-induced decrease in eNOS expression (brown stained cells) in pulmonary arterioles in rat lungs 4 wks after transfusion of ECs.

Supplemental Figure III. Effects of IL8RA/B-EC, Null-EC, or vehicle transfusion on MCT-induced decrease in eNOS expression (brown stained cells) in alveoli in rat lungs 4 wks after transfusion of ECs.

Supplemental Figure IV. Effects of IL8RA/B-EC, Null-EC, or vehicle transfusion on MCT-induced increase in iNOS expression (brown stained cells) in pulmonary arterioles in rat lungs 4 wks after transfusion of ECs.

Supplemental Figure V. Effects of IL8RA/B-EC, Null-EC, or vehicle transfusion on MCT-induced increase in iNOS expression (brown stained cells) in alveoli in rat lungs 4 wks after transfusion of ECs.

Supplemental Figure VI. Effects of IL8RA/B-EC, Null-EC, or vehicle transfusion on MCT-induced increase in IL-8 (CINC-2•) expression (brown stained cells) in pulmonary arterioles in rat lungs 4 wks after transfusion of ECs. CINC-2• -

cytokine induced neutrophil chemoattractant-2-beta (equivalent to human IL-8)

Supplemental Figure VII. Effects of IL8RA/B-EC, Null-EC, or vehicle transfusion on MCT-induced increase in IL8 (CINC-2•) expression (brown stained cells) in alveoli in rat lungs 4 wks after transfusion of ECs.

Supplemental Figure VIII. Effects of IL8RA/B-EC, Null-EC, or vehicle transfusion on MCT-induced increase in MCP-1 expression (brown stained cells) in pulmonary arterioles in rat lungs 4 wks after transfusion of ECs. MCP-1 - monocyte chemotactic protein-1.

Supplemental Figure IX. Effects of IL8RA/B-EC, Null-EC, or vehicle transfusion on MCT-induced increase in MCP-1 expression (brown stained cells) in alveoli in rat lungs 4 wks after transfusion of ECs.

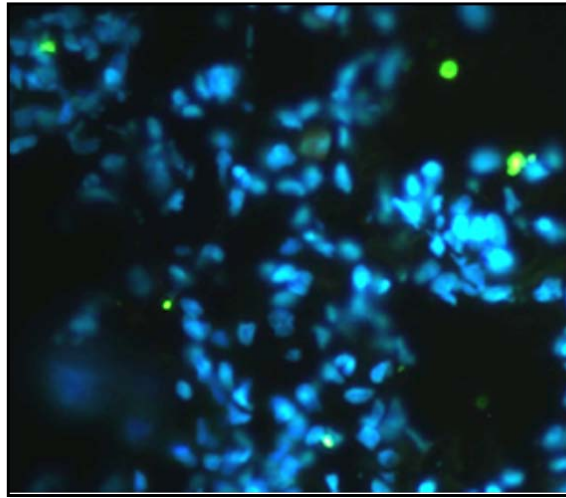
Supplemental Figure X. Effects of IL8RA/B-EC, Null-EC, or vehicle transfusion on MCT-induced infiltration of neutrophils (brown stained cells) in pulmonary arterioles in rat lungs 4 wks after transfusion of ECs.

Supplemental Figure XI. Effects of IL8RA/B-EC, Null-EC, or vehicle transfusion on MCT-induced infiltration of neutrophils (brown stained cells) in alveoli in rat lungs 4 wks after transfusion of ECs.

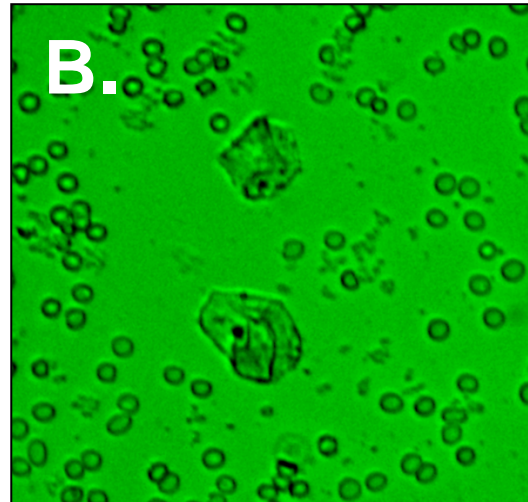
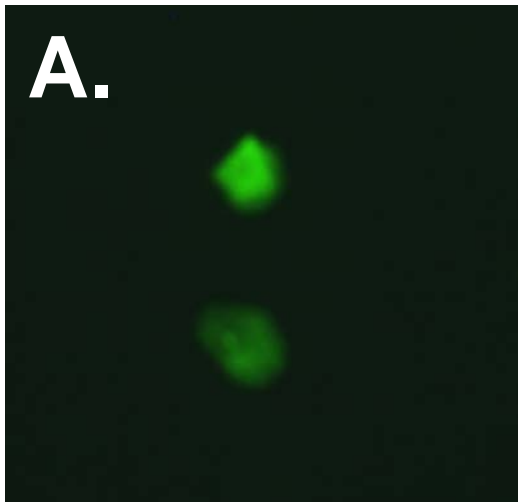
Supplemental Figure XII. Effects of IL8RA/B-EC, Null-EC, or vehicle transfusion on MCT-induced infiltration of monocytes/macrophages (brown stained cells) in pulmonary arterioles in rat lungs 4 wks after transfusion of ECs.

Supplemental Figure XIII. Effects of IL8RA/B-EC, Null-EC, or vehicle transfusion on MCT-induced infiltration of monocytes/macrophages (brown stained cells) in alveoli in rat lungs 4 wks after transfusion of ECs.

IL8RA/RB-ECs (GFP marked) in lung of rat treated with MCT



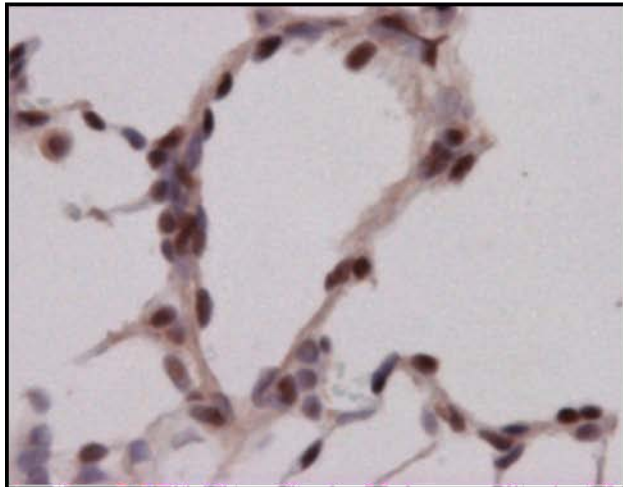
GFP labeled IL8RA/RB-ECs in Blood at 1 day after transfusion. A) Dark field, and B) Bright field



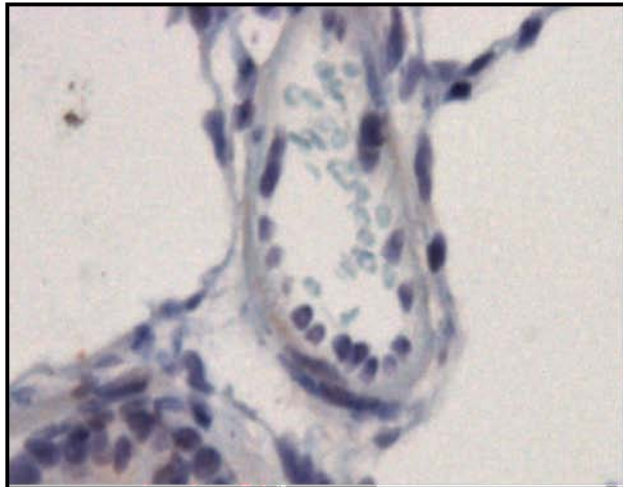
Supplemental Figure I

eNOS Positive Cells in Pulmonary Arterioles

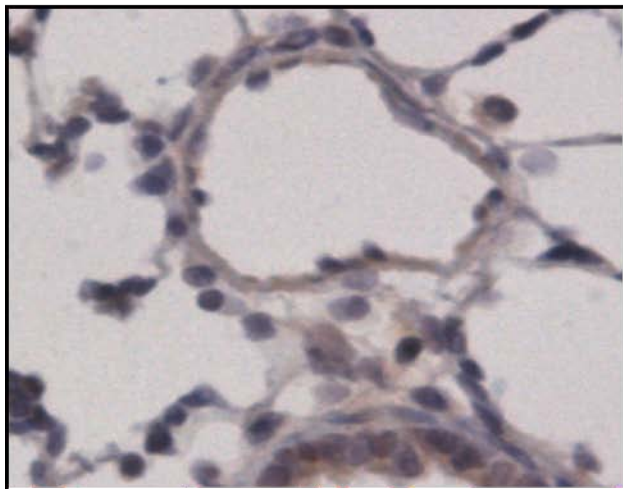
Vehicle



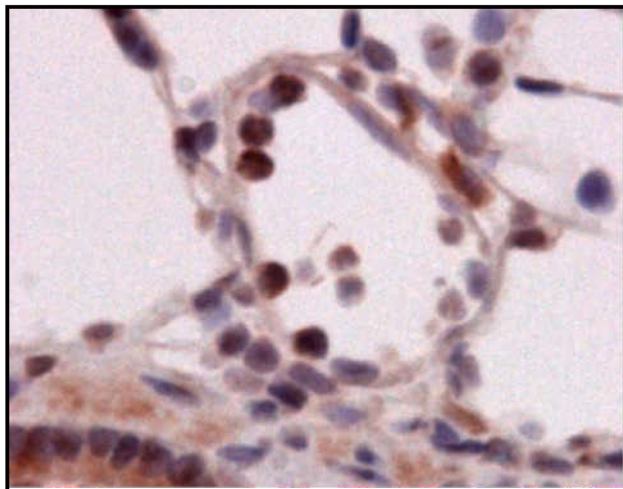
MCT Alone



MCT+Null-ECs



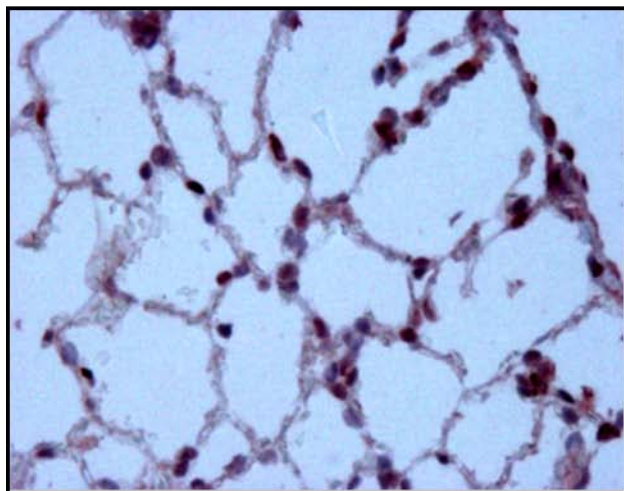
MCT+IL8RA/B-ECs



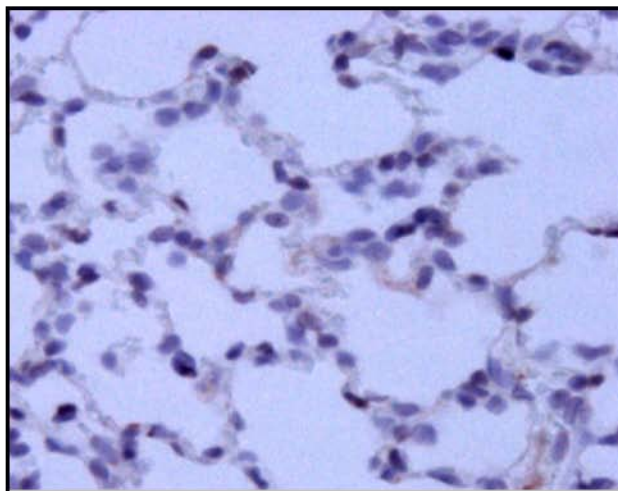
Supplemental Figure II

eNOS Positive Cells in Alveoli

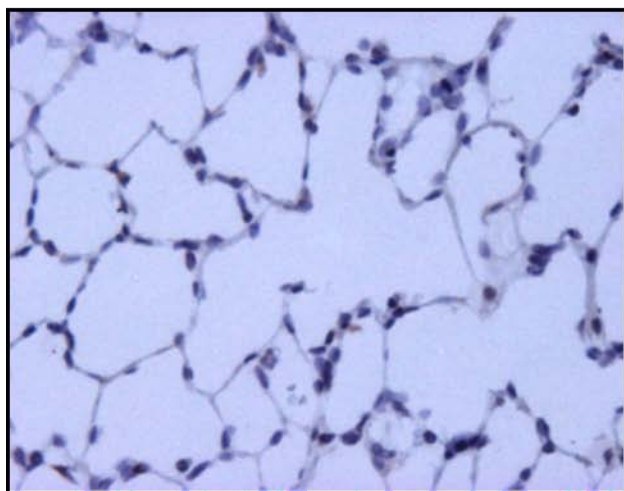
Vehicle



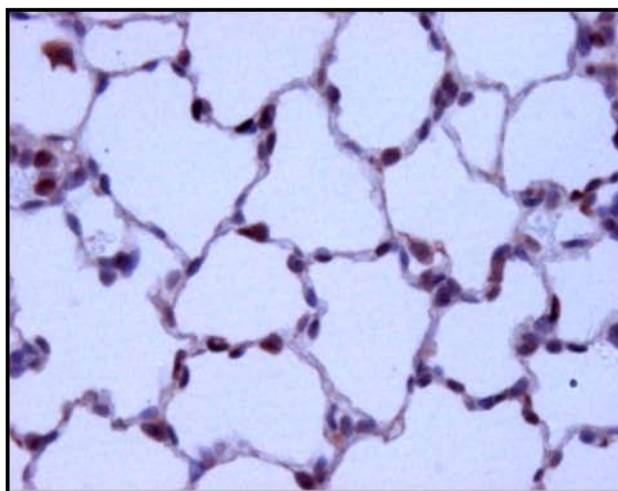
MCT Alone



MCT+Null-ECs



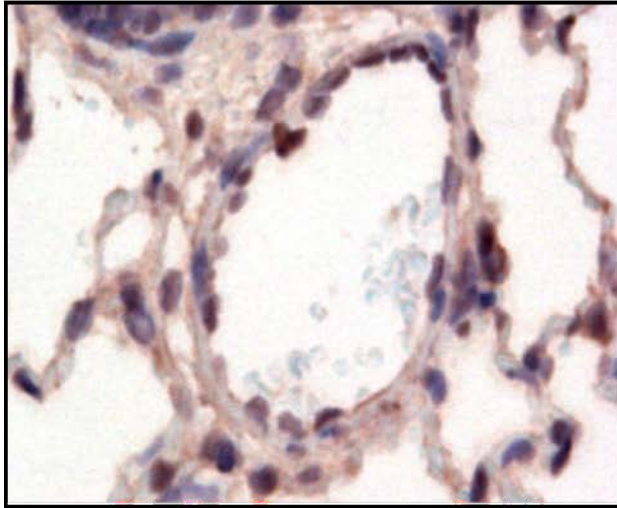
MCT+IL8RA/B-ECs



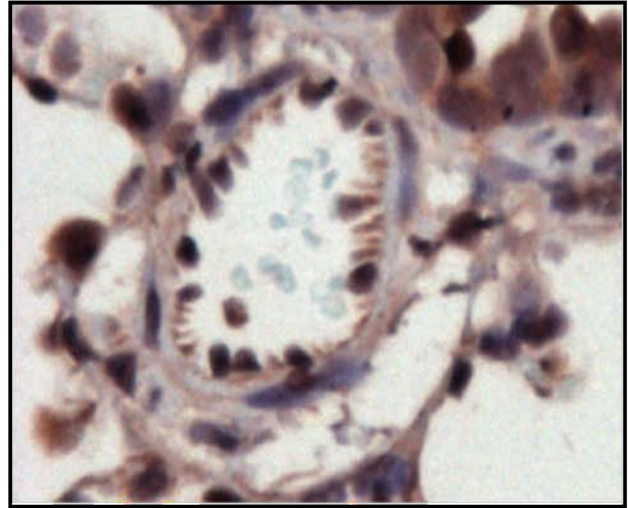
Supplemental Figure III

iNOS Positive Cells on Pulmonary Arterioles

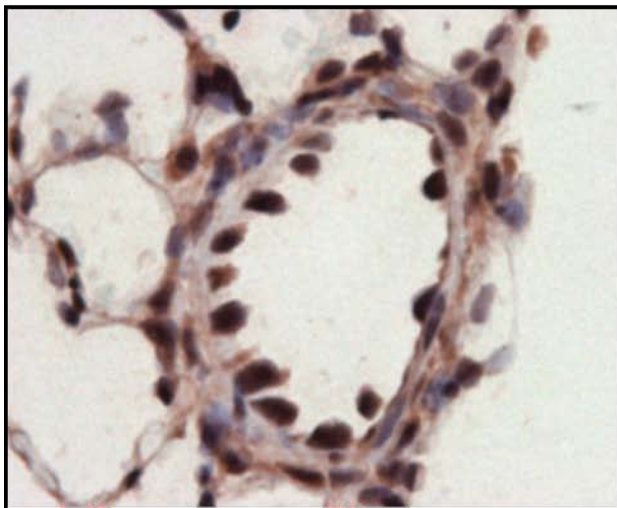
Vehicle



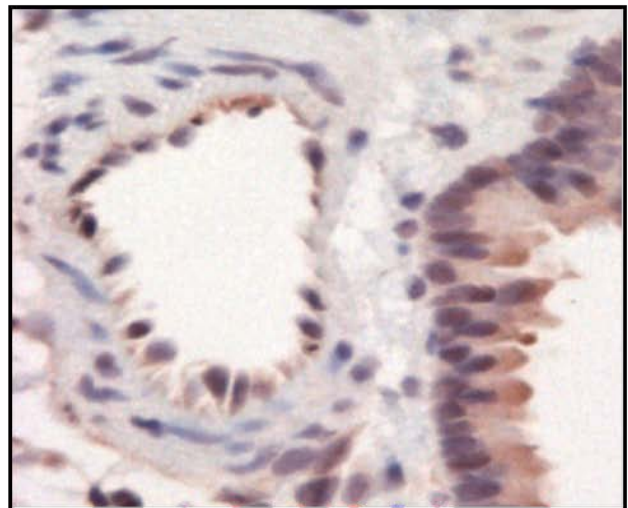
MCT Alone



MCT+Null-ECs



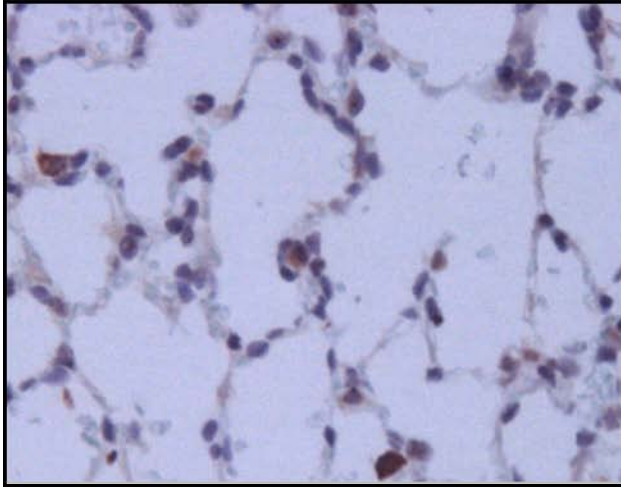
MCT+IL8RA/B-ECs



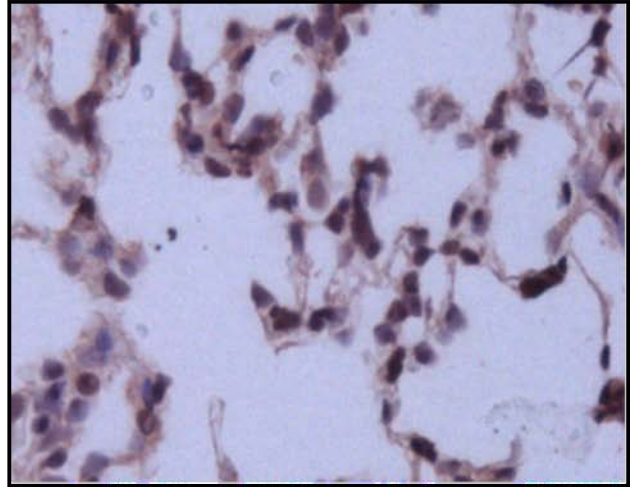
Supplemental Figure IV

iNOS Positive Cells in Alveoli

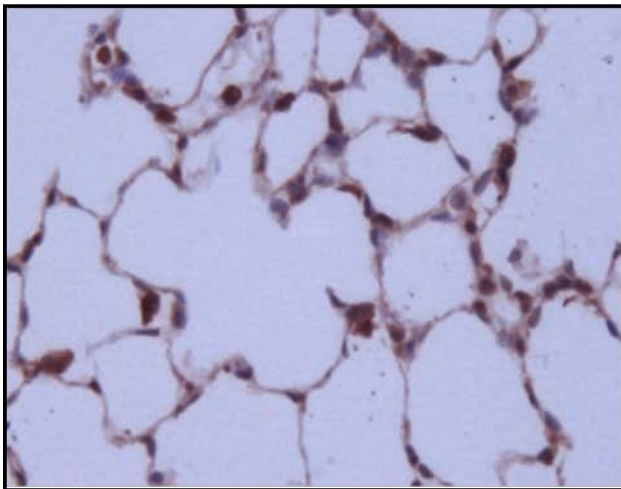
Vehicle



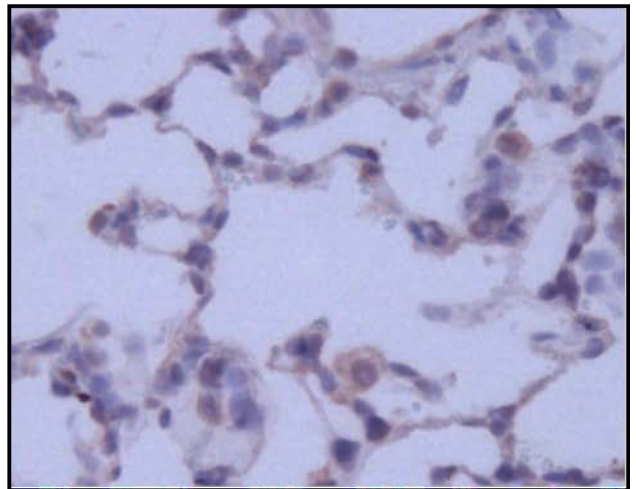
MCT Alone



MCT+Null-ECs



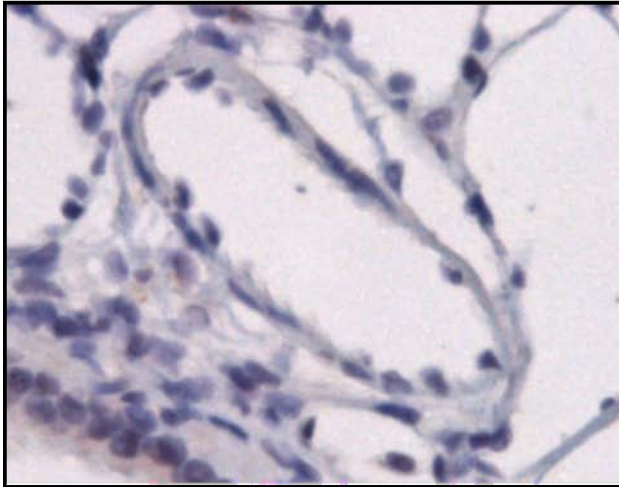
MCT+IL8RA/B-ECs



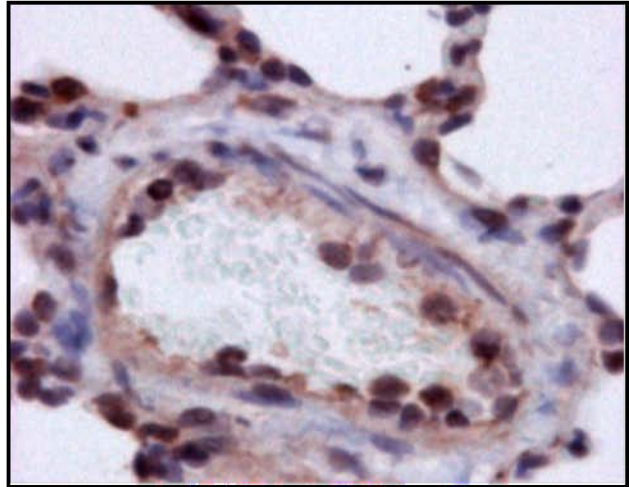
Supplemental Figure V

IL8 Positive Cells in Pulmonary Arterioles

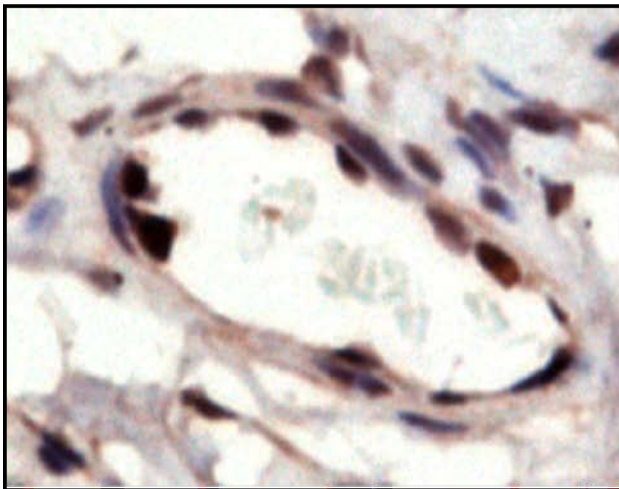
Vehicle



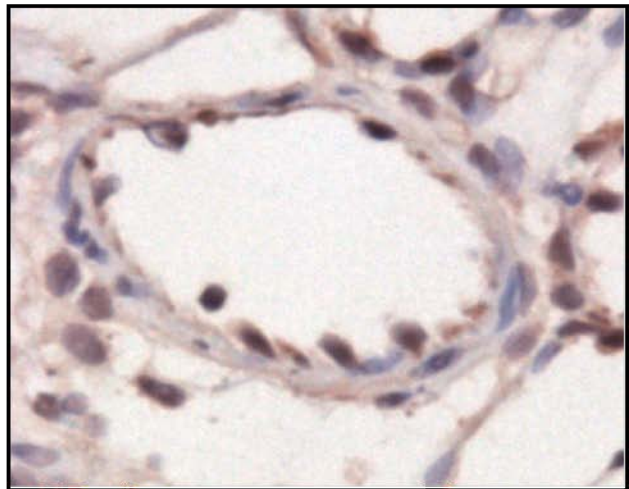
MCT Alone



MCT+Null-ECs



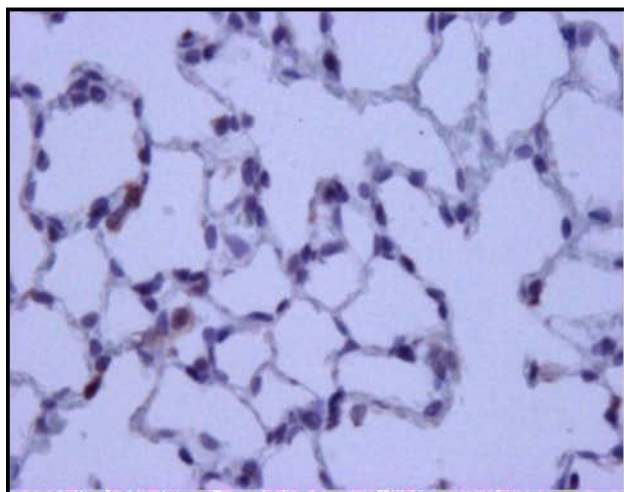
MCT+IL8RA/B-ECs



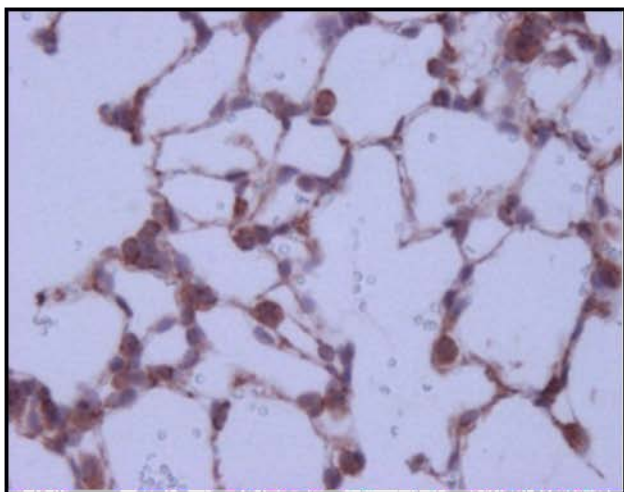
Supplemental Figure VI

IL8 Positive Cells in Alveoli

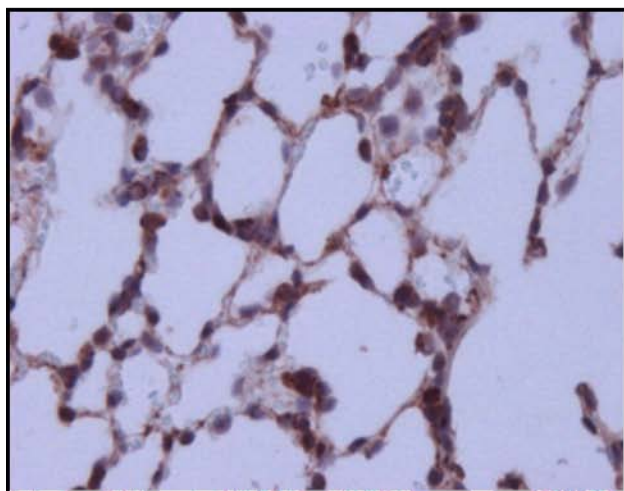
Vehicle



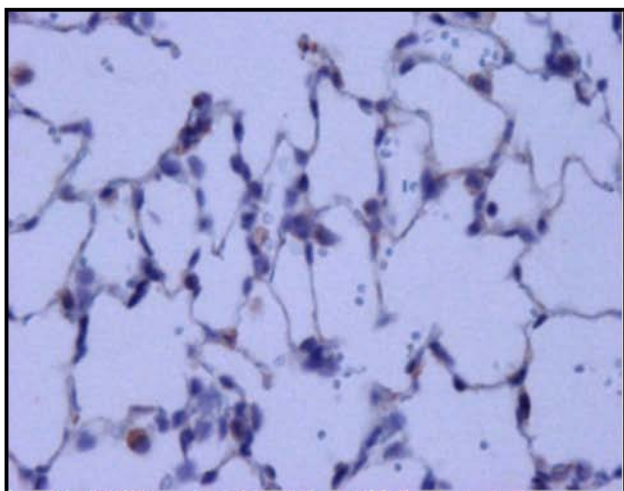
MCT Alone



MCT+Null-ECs



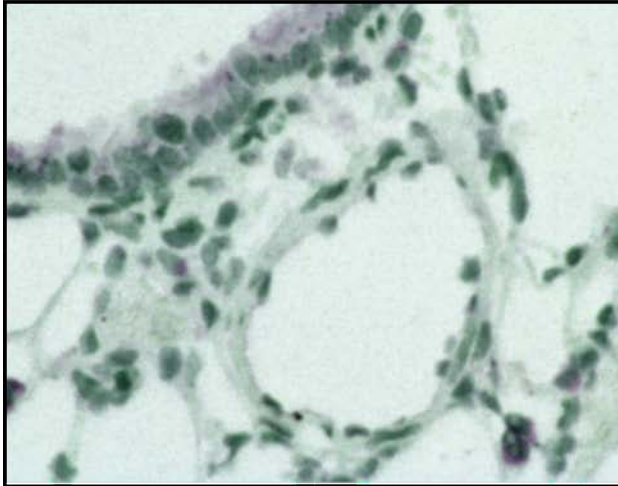
MCT+IL8RA/B-ECs



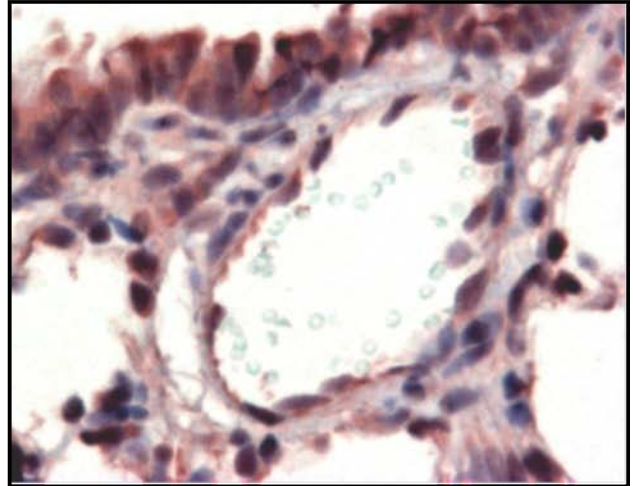
Supplemental Figure VII

MCP-1 Positive Cells in Pulmonary Arterioles

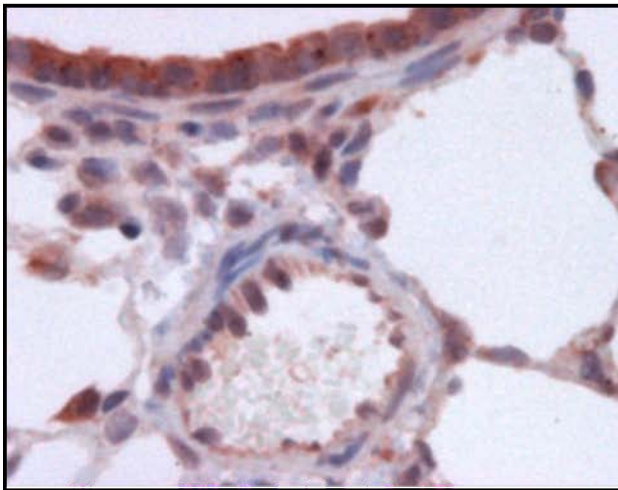
Vehicle



MCT Alone



MCT+Null-ECs



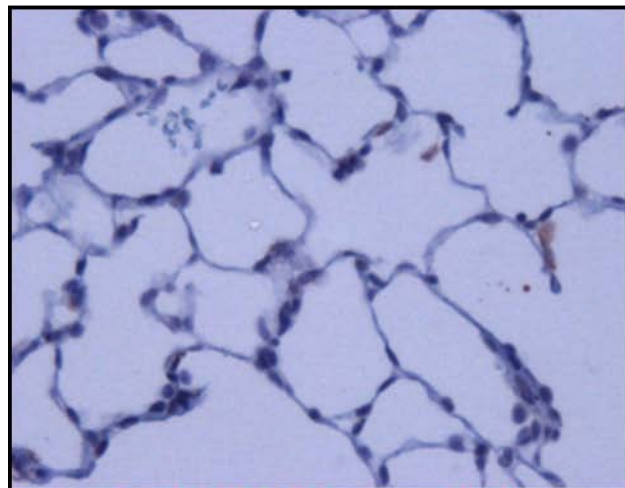
MCT+IL8RA/B-ECs



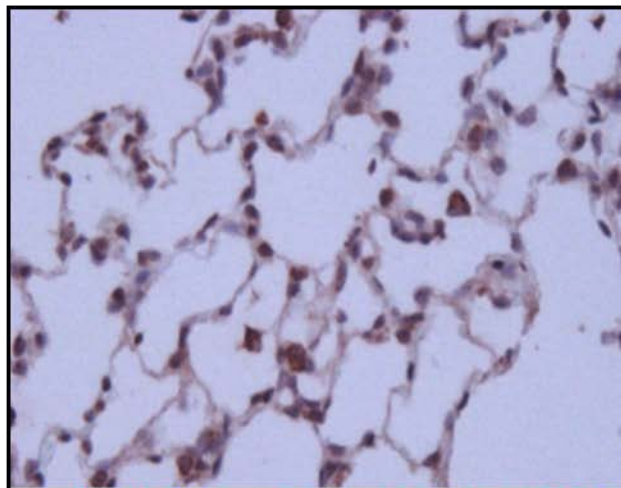
Supplemental Figure VIII

MCP-1 Positive Cells in Alveoli

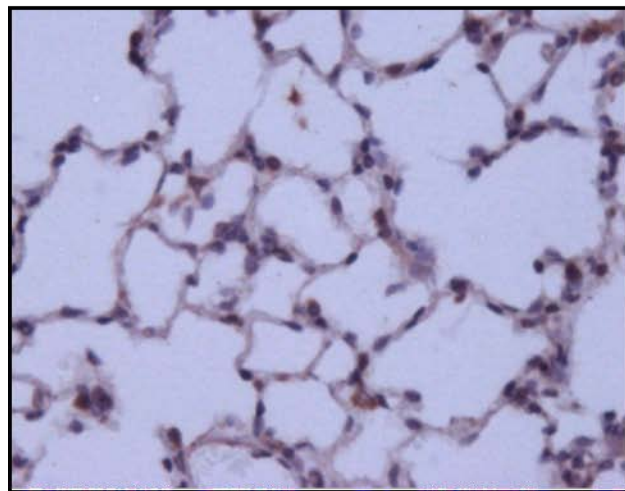
Vehicle



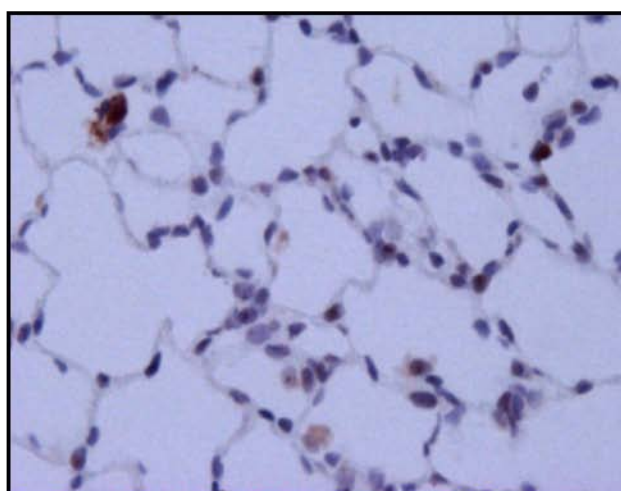
MCT Alone



MCT+Null-ECs



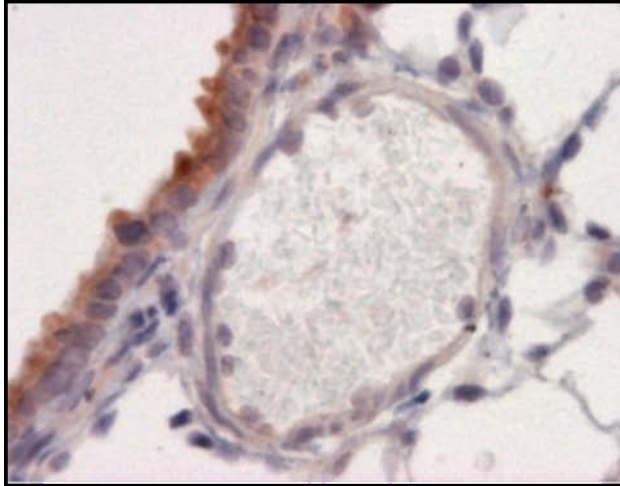
MCT+IL8RA/B-ECs



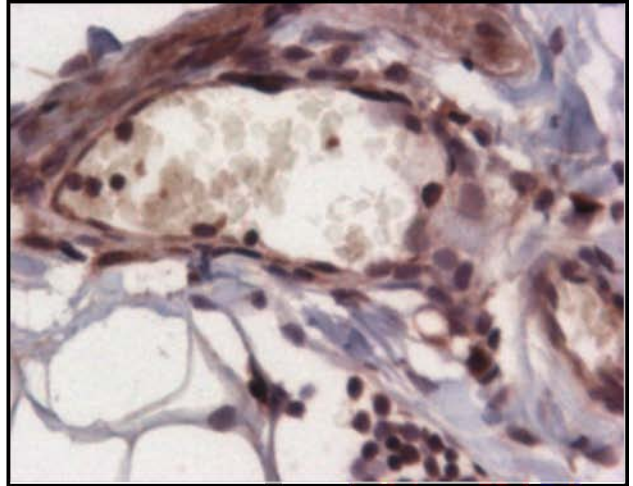
Supplemental Figure IX

Neutrophils in Pulmonary Arterioles

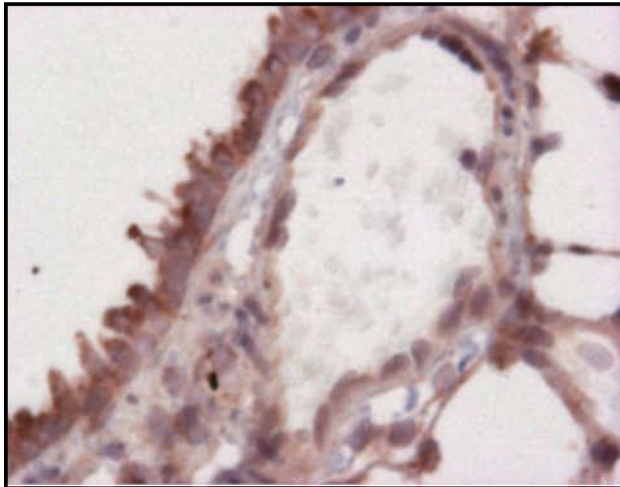
Vehicle



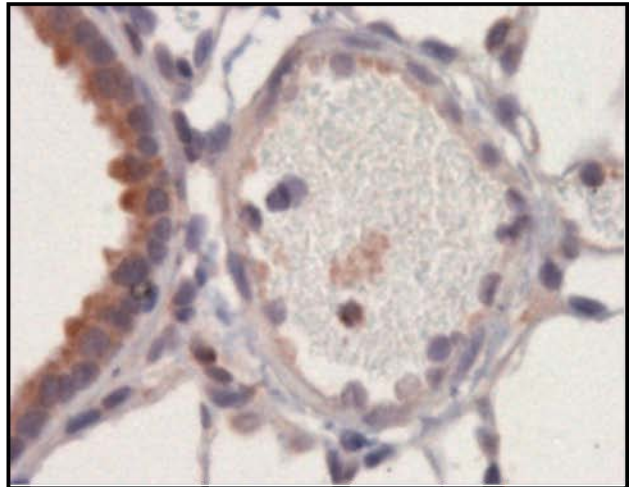
MCT Alone



MCT+Null-ECs



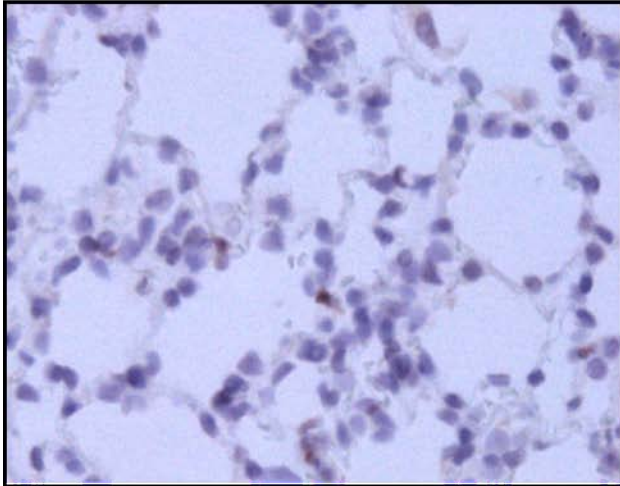
MCT+IL8RA/B-ECs



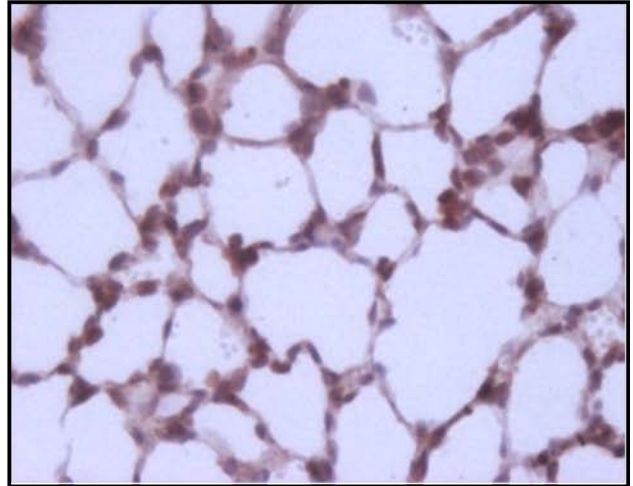
Supplemental Figure X

Neutrophils in Alveoli

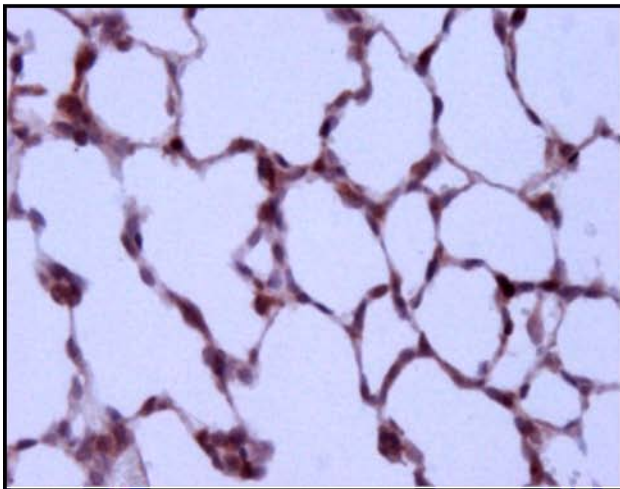
Vehicle



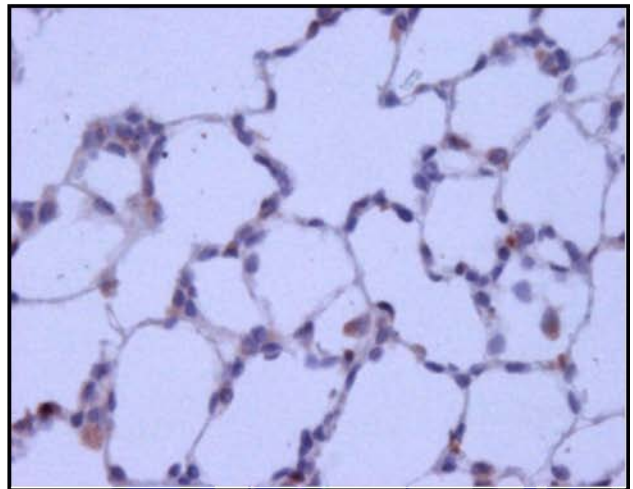
MCT Alone



MCT+Null-ECs



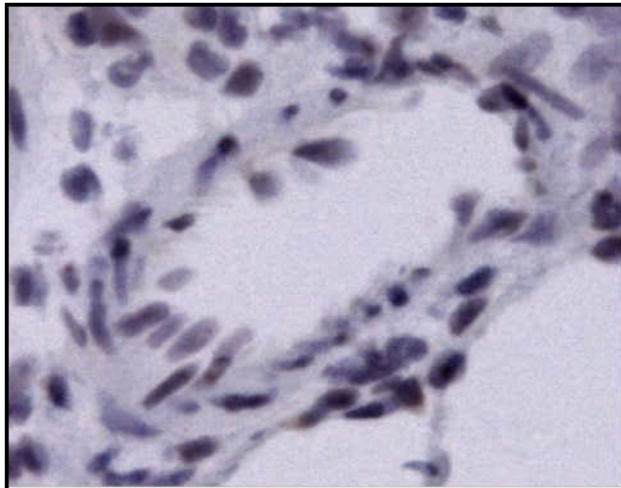
MCT+IL8RA/B-ECs



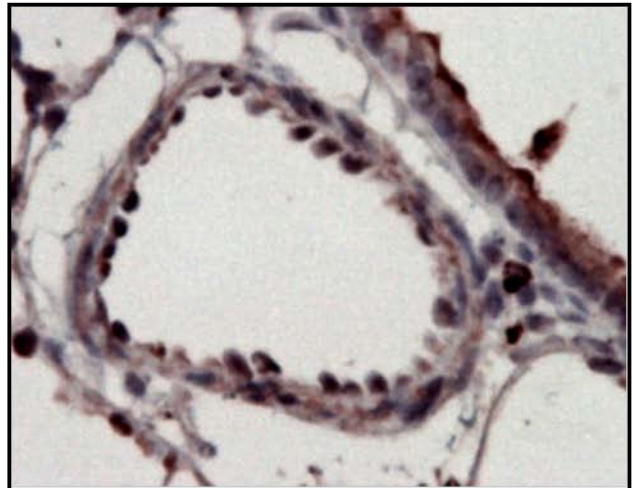
Supplemental Figure XI

Monocytes/Macrophages in Pulmonary Arterioles

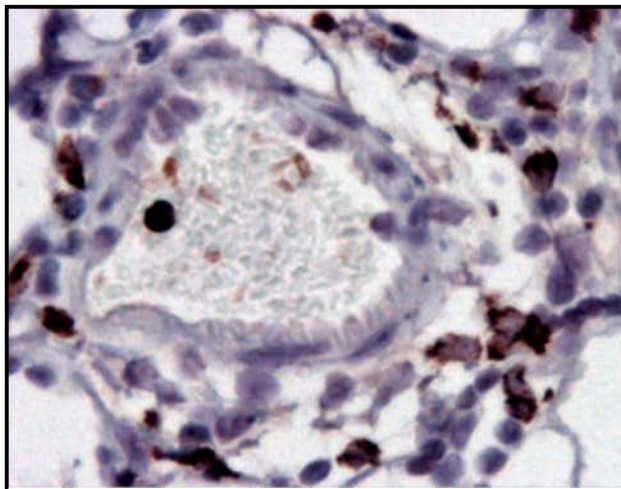
Vehicle



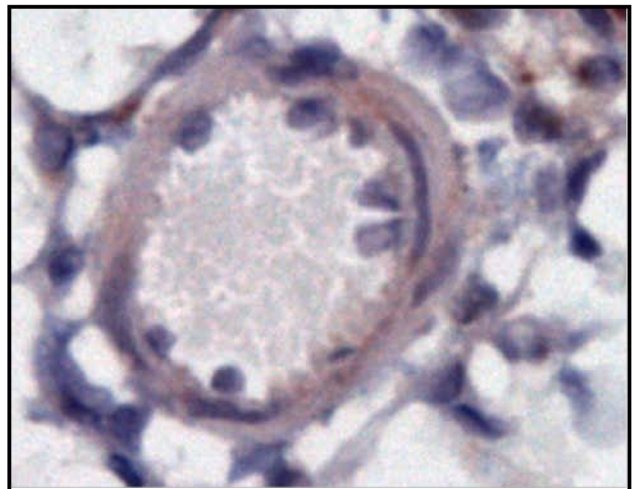
MCT Alone



MCT+Null-ECs



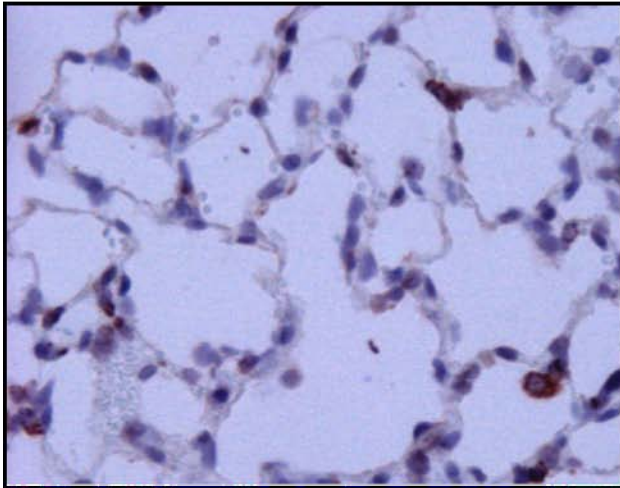
MCT+IL8RA/B-ECs



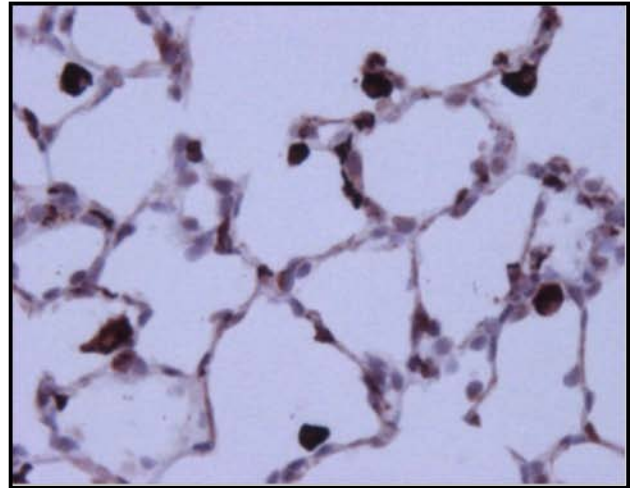
Supplemental Figure XII

Monocytes/Macrophages in Alveoli

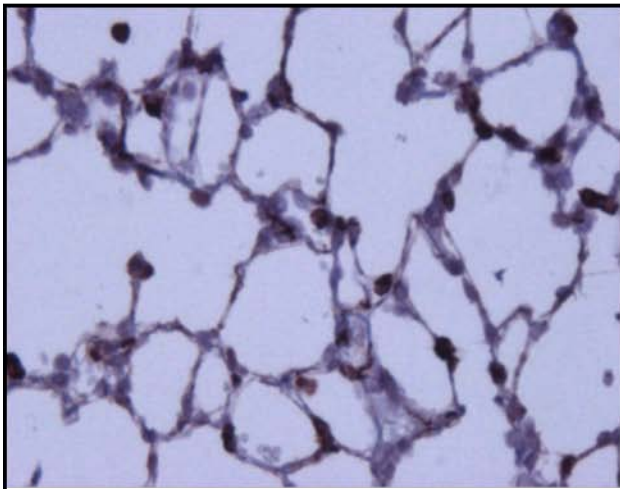
Vehicle



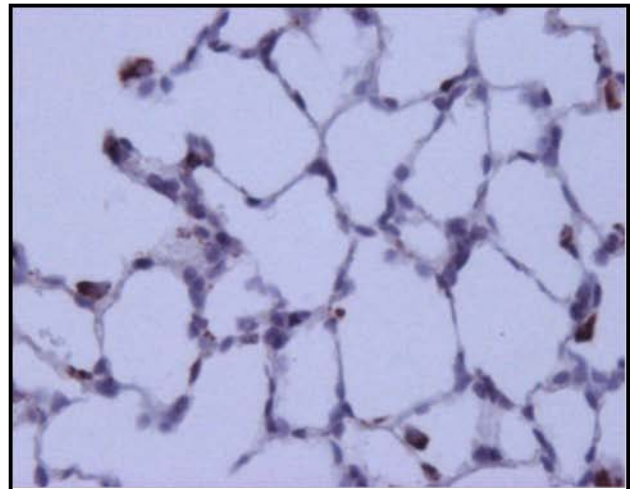
MCT Alone



MCT+Null-ECs



MCT+IL8RA/B-ECs



Supplemental Figure XIII