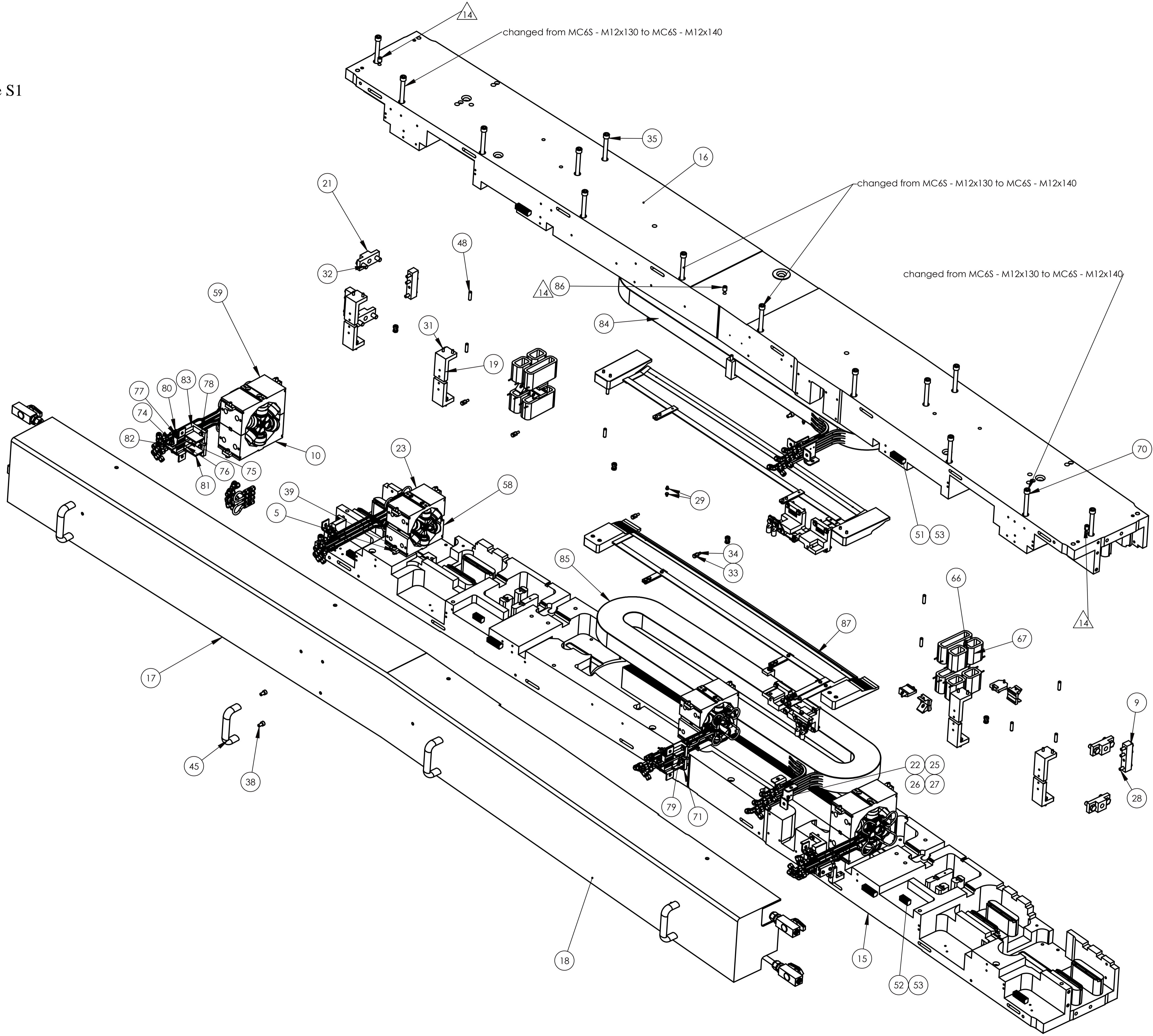


Figure S1



REVISIONS				
ZONE	Rev.	Description	Date	Approved
	13	2x sheets added: Item 54-63 added, Q-pole, item 23 replaced with MC6S - M12x140. Jumper assembly have been dissolved and are now part of this assembly. The cable lugs with bolts, nuts and washers have been removed. Each sextupole half have been given a separate drawing, see item 64 and 65 for the new drawing names. A sheet with water connections has been added	2013-03-14	DL, SB
	14	3x stopscrews added. Dipole coils changed. Polarity changed for Q11 and Q12 on sheet 4 and in the trim coil table on sheet 5. Water connections changed on sheet 6	2013-04-30	SB
	15	Thermostat assembly dissolved and the terminals changed from 2x 37 pos terminals to 1x 50 pos terminal on the top yoke and from 3x 37 pos terminals to 1x 37 pos and 1x 50 pos terminal on the bottom yoke.	2013-09-19	SB

ITEM NO.	PART NUMBER	QTY.
1	3.COAP- DMP017, Pole top, X-corr	4
2	3.COAP- DMP018, Pole top, Y-corr	8
3	3.DMA005, Shunt pcb subasm	1
4	3.DMA009, Cover attachment subasm	4
5	3.DMP004, Clamp, poles	16
6	3.DMP005, Coil attachment	4
7	3.DMP006, Clamp attachment	2
8	3.DMP064, Loop tube	8
9	3.U3_ DMP050, Alignment tool	3
10	3.SXF-O_ DMA101, Sextupole SF0 and SFI	2
11	Water Manifold Lower U3, 201424	1
12	3.U3_ DMA006, Coilbracket subasm	4
13	3.U3_ DMA007, Coilbracket subasm	4
14	Water Manifold Upper U3, 201385	1
15	3.U3_ DMP003, Yoke bottom, Uc3	1
16	3.U3_ DMP004, Yoke top, Uc3	1
17	3.U3_ DMP005, Cover, left	1
18	3.U3_ DMP006, Cover, right	1
19	3.U4_ DMP005, Attachment base	12
20	Q- Pole UC3 203528	16
21	3.Ux_ DMP014, Attachment, lifting point	4
22	Cable-Lug-KRF-1_ 5-4-Nelco	18
23	3.SXD_ DMA101, SD Sextupole, half	2
24	Elbow SS-6M0-9 Swagelok	44
25	Lock washer, DIN 6798 Typ A 4,3 A4	18
26	Screw M6S M4x10 A2.sldrpt	2
27	Nut M6M-M4 A2	2
28	Screw M6S M8x40 A2	9
29	Screw M6S-M5x6 A2	4
30	Screw M6S-M6x12 A2	14
31	Screw M6S-M6x25 A2	56
32	Screw_ M6S-M12x30H A2	8
33	Screw_ M6S-M6x8 A2	4
34	Screw-DSS-M60100x12-Bufab	4
35	Screw-MC6S-M12x130 A2	10
36	Screw-MC6S-M4x12 A2	16
37	Screw-MC6S-M6x30 A2	4
38	Screw-MC6S-M8x14 A2	8
39	Screw-MC6S-M8x20 A2	16
40	Screw-MC6S-M8x25 A2	48
41	Screw-MC6S-M8x75 A2	4
42	Thermo contact, thermik L01-60	22
43	Thermo contact, thermik L01-70	22
44	Union, SS-6M0-6_6_ Swagelok	16
45	WN135-120-M8-Wiberger	4
46	3.U1_ DMA008, Trimcoil terminal 5-pos	1
47	3.U1_ DMA008, Trimcoil terminal 3-pos	1
48	Cylindrical pin CP 8m6x30 A4	10
49	Screw M6S-M8x16 A2	4
50	Nut M6M-M8 A2	12
51	Multi terminal strip MK3/6 Weidmüller 0274220000	8
52	Multi terminal strip MK3/4 Weidmüller 0274020000	4
53	MC6S M3x16 A2	26
54	Phoenix plug in 16p1757158	3
55	Phoenix plug-in 8p1757077	1
56	Phoenix plug-in 4p1757035	1
57	Multi terminal strip MK3/8 Weidmüller 0274420000	1
58	3.SXD_ DMA104, SD Sextupole, half	2
59	3.SXF-O_ DMA104, Sextupole SF0 and SFI	2
60	Coil 1 brazed UX_ DMP004, Danfysik, 7103014061	2
61	Coil 4 brazed UX_ DMP004, Danfysik, 7103014064	2
62	Coil 7 brazed UX_ DMP004, Danfysik, 7103017270	2
63	Coil 6 brazed UX_ DMP004, Danfysik, 7103017124	2
64	Coil 5 brazed UX_ DMP004, Danfysik, 7103017123	2
65	Coil 8 brazed UX_ DMP004, Danfysik, 7103017265	2
66	Coil COAP_ DMP002, Danfysik, 7103013516	4
67	Coil COAP_ DMP014, Danfysik, 7103013517	8
68	Coil 3 brazed UX_ DMP004, Danfysik, 7103014063	2
69	Coil 2 brazed UX_ DMP004, Danfysik, 7103014062	2
70	Screw-MC6S-M12x140 A2	4
71	3.M1_ DMP032, Jumper bracket	6
72	3.U3_ DMP023, Jumper spacer	4
73	Washer BRB-8_4 A2	16
74	Screw M6S-M8x25 A2	8
75	3.M1_ DMP018, Marking [Positive]	8
76	3.M1_ DMP018, Marking [Negative]	8
77	Screw M6S-M5x12 A2	64
78	Washer BRB-6_4 A2	32
79	3.M1_ DMP033, Jumper bracket	6
80	Screw M6S 4x6 A2	16
81	3.M1_ DMP023, Jumper bracket	2
82	3.U3_ DMP023, Jumper spacer	4
83	3.M1_ DMP019, Jumper bracket	2
84	Coil upper UX_ DMP012, Danfysik, 7103014117	1
85	Coil lower UX_ DMP012, Danfysik, 7103014116	1
86	ISO 4029 A2 M12x16	3
87	204590	1
88	D-Sub 50p Male	1
89	Phoenix contact 2304063	1
90	Phoenix contact 2304076	2
91	DIN mounting rail, B=35 H=7,5 L=213	1
92	DIN mounting rail, B=35 H=7,5 L=261	1

Designed by		2010-10-08		Material		Surface treatment		Logos broken	
Reviewed by		-		Approved by		General tolerance (ISO 2768-1)		Production type	
-		-		-		fine		3,2	
Description		Uc3, assy		Drawing number		3.U3_DMA002		Revision	
MAX-lab		Uc3, assy		3.U3_DMA002		15		1(6)	

This document is our property and shall not without our permission be reproduced, stored in a retrieval system, or transmitted in any form or by any means, electronic, mechanical, photocopying, recording, or by any information storage and retrieval system.

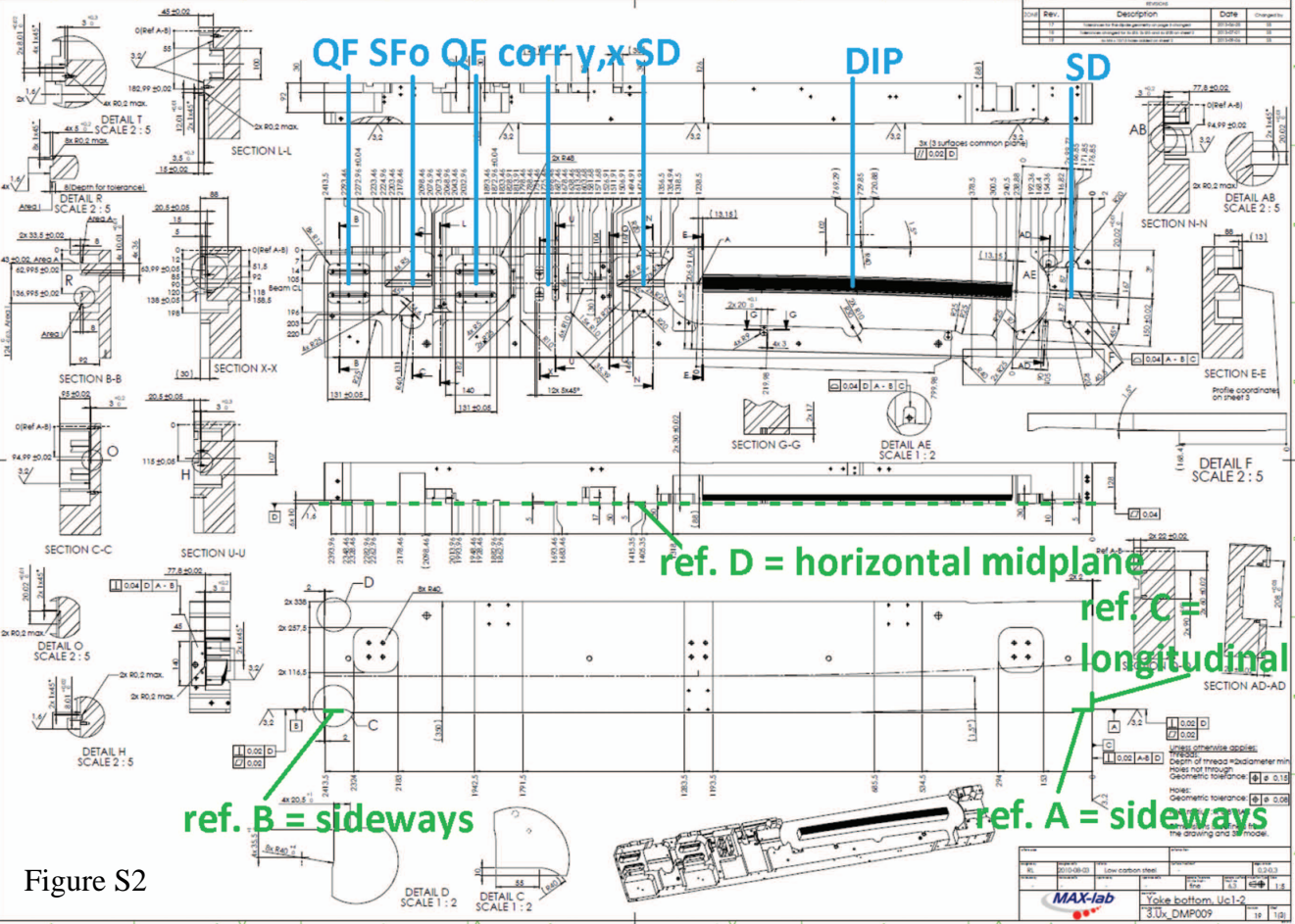
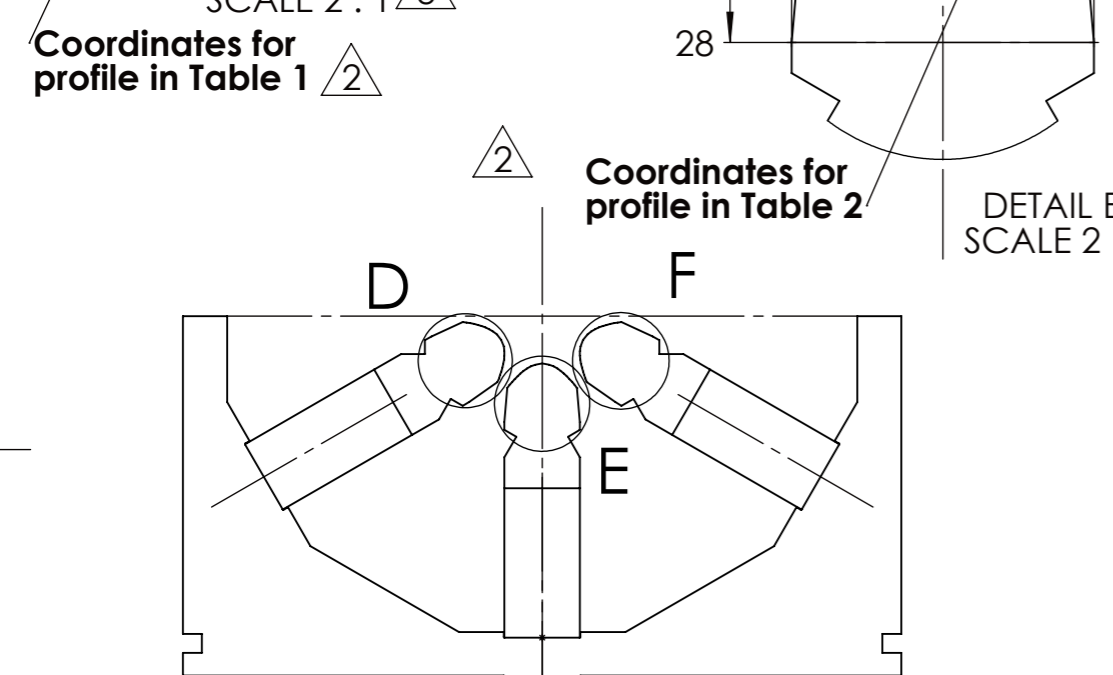
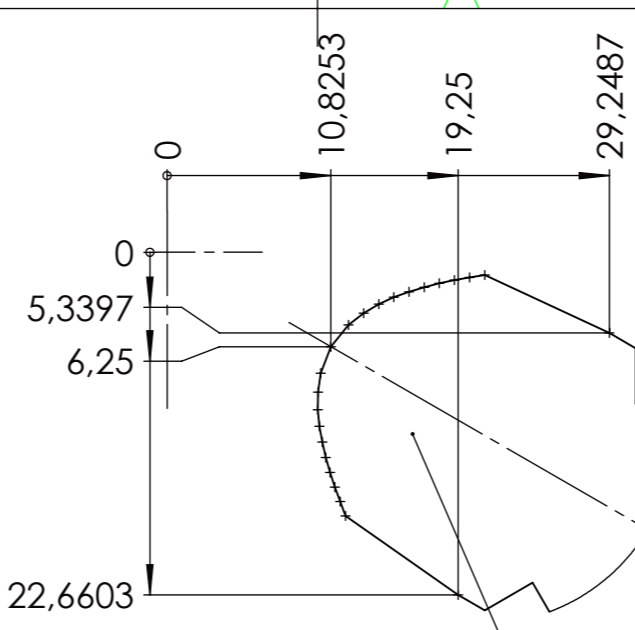
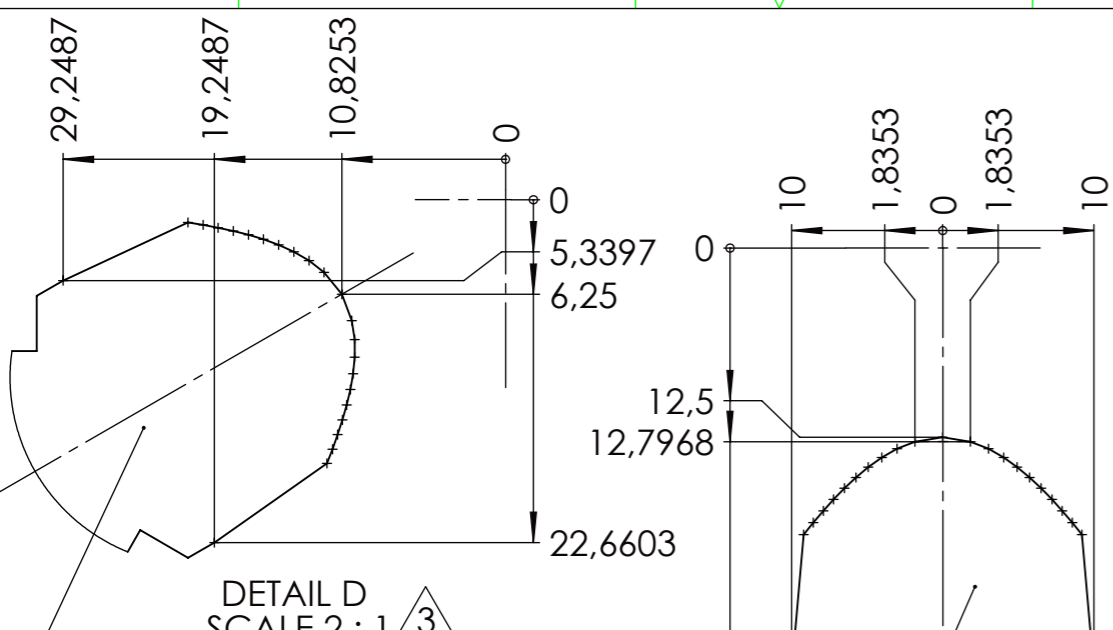
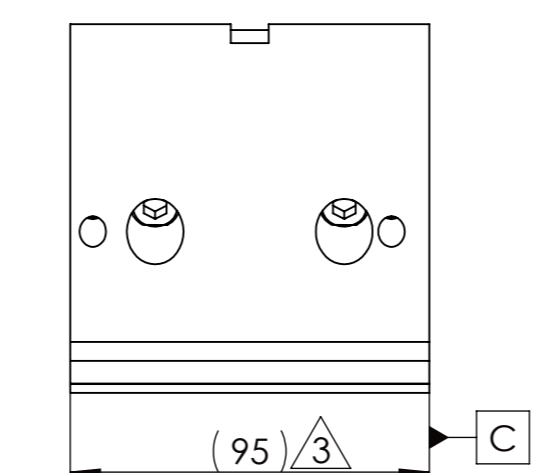
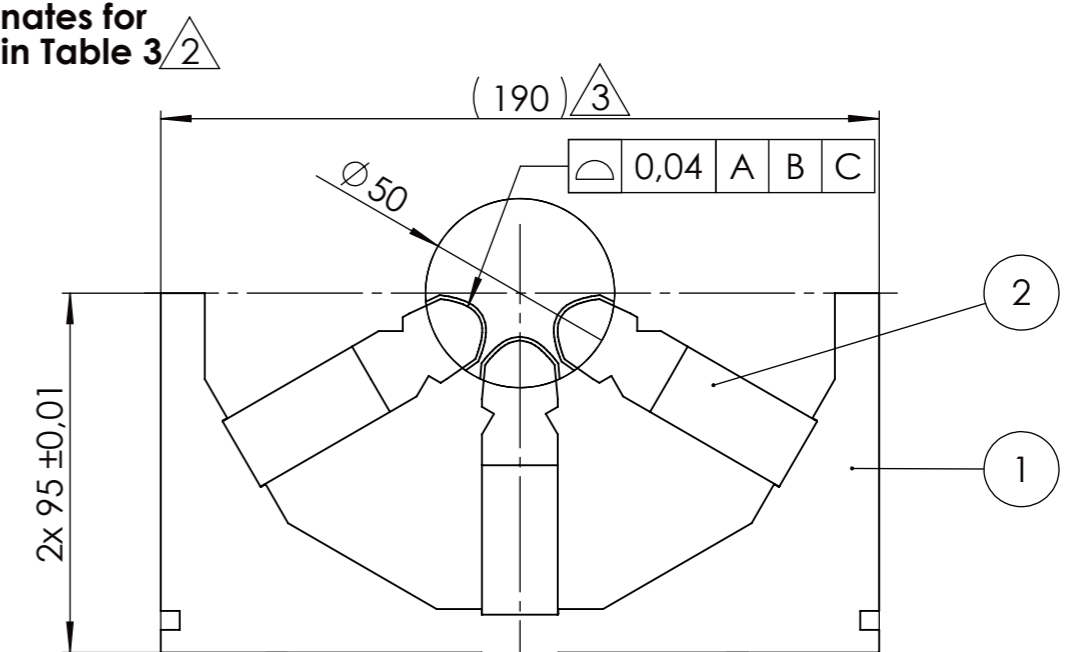
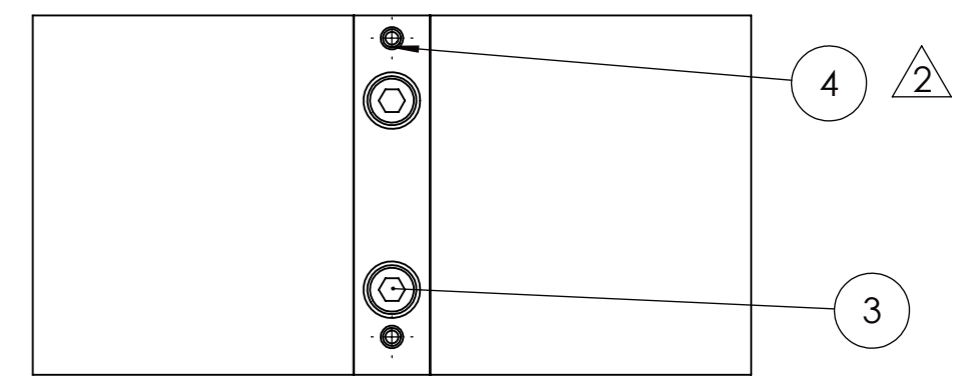


Figure S2



REVISIONS				
ZONE	REV.	DESCRIPTION	DATE	APPROVED
	2	Coordinates for profile added. 6x cyl pins added.	2012-02-28	DL
	3	1x dimension removed. 2x dimension put in parentheses. Detail views changed letters.	2012-04-20	DL



X(mm)	Y(mm)
-29,2487	-5,3397
-21	-1,5101
-20	-1,666
-19	-1,8468
-18	-2,0586
-17	-2,3093
-16	-2,6102
-15	-2,977
-14	-3,4339
-13	-4,0201
-12	-4,809
-10,8253	-6,25
-10,1647	-7,9878
-9,9815	-9,2483
-9,9738	-10,4074
-10,0782	-11,5019
-10,2605	-12,5513
-10,4999	-13,5678
-10,7827	-14,5591
-11,0994	-15,5311
-11,4428	-16,4875
-11,8078	-17,4315
-19,2487	-22,6603

X(mm)	Y(mm)
-10	-28
-9,1923	-18,9416
-8,5572	-18,1535
-7,9006	-17,3779
-7,2172	-16,6177
-6,5001	-15,8771
-5,7395	-15,1615
-4,9218	-14,4789
-4,0262	-13,8413
-3,0185	-13,2684
-1,8353	-12,7968
0	-12,5
1,8353	-12,7968
3,0185	-13,2684
4,0262	-13,8413
4,9218	-14,4789
5,7395	-15,1615
6,5001	-15,8771
7,2172	-16,6177
7,9006	-17,3779
8,5572	-18,1535
9,1923	-18,9416
10	-28

X(mm)	Y(mm)
29,2487	-5,3397
21	-1,5101
20	-1,666
19	-1,8468
18	-2,0586
17	-2,3093
16	-2,6102
15	-2,977
14	-3,4339
13	-4,0201
12	-4,809
10,8253	-6,25
10,1647	-7,9878
9,9815	-9,2483
9,9738	-10,4074
10,0782	-11,5019
10,2605	-12,5513
10,4999	-13,5678
10,7827	-14,5591
11,0994	-15,5311
11,4428	-16,4875
11,8078	-17,4315
19,2487	-22,6603

ITEM NO.	PART NUMBER	QTY.
1	3.SXFM_DMP001, Yoke, Sextupole SFm	1
2	3.SXFM_DMP002, Pole, Sextupole SFm	3
3	Screw-MC6S-M8x20 A2	6
4	Cyl pin DIN7979 m6 6x24	6

Where used 3.SXFM_DMA001, SFm Sextupole half		External BOM			
Designed by RL	Designed date 2011-06-20	Material -	Surface treatment -	Edges broken 0,2-0,3	
Reviewed by -	Reviewed date -	Approved by -	Approved date -	General tolerance SS-ISO 2768-1 fine	General surface finish, Ra 3,2
Description Yoke half, assembly			Projection type ⊕	Scale 1:2	
Drawing number 3.SXFM_DMA003			Revision 3	Sheet 1(1)	

Figure S3b

This document is our property and shall not without our permission in writing be altered, copied, used for manufacturing or communicated to any other person or company.