

Supporting information

Figure S1 Cytotoxic effects of doxorubicin on OVCAR8 and NCI_ADR/RES cells. Cells were treated with various concentrations of doxorubicin. After incubation for 48 hours, cell proliferation was determined by MTT assays.

Figure S2 Verification of the purity of isolated mitochondria by western blotting. Western blotting was performed on total cell lysis (TCL), cytosol (SNP), and mitochondrial (M) fractions after cellular fractionation. IMM, inner mitochondrial membrane; OMM, outer mitochondrial membrane; matrix, mitochondrial matrix.

Figure S3 Flowcharts of forward and reverse SILAC-based mitochondrial quantitative proteome.

Figure S4 A summary of the number of proteins quantified from three independent SILAC experiments. F1 result was obtained from forward SILAC experiments, R1 and R2 results were from two reverse SILAC experiments.

Figure S1

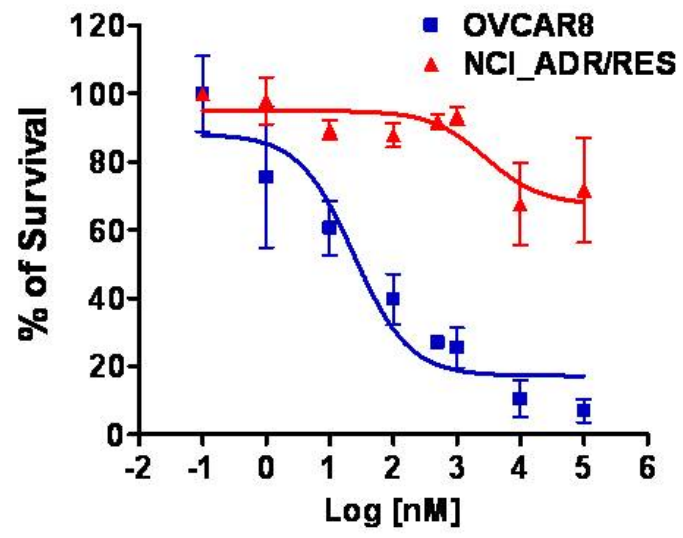


Figure S2

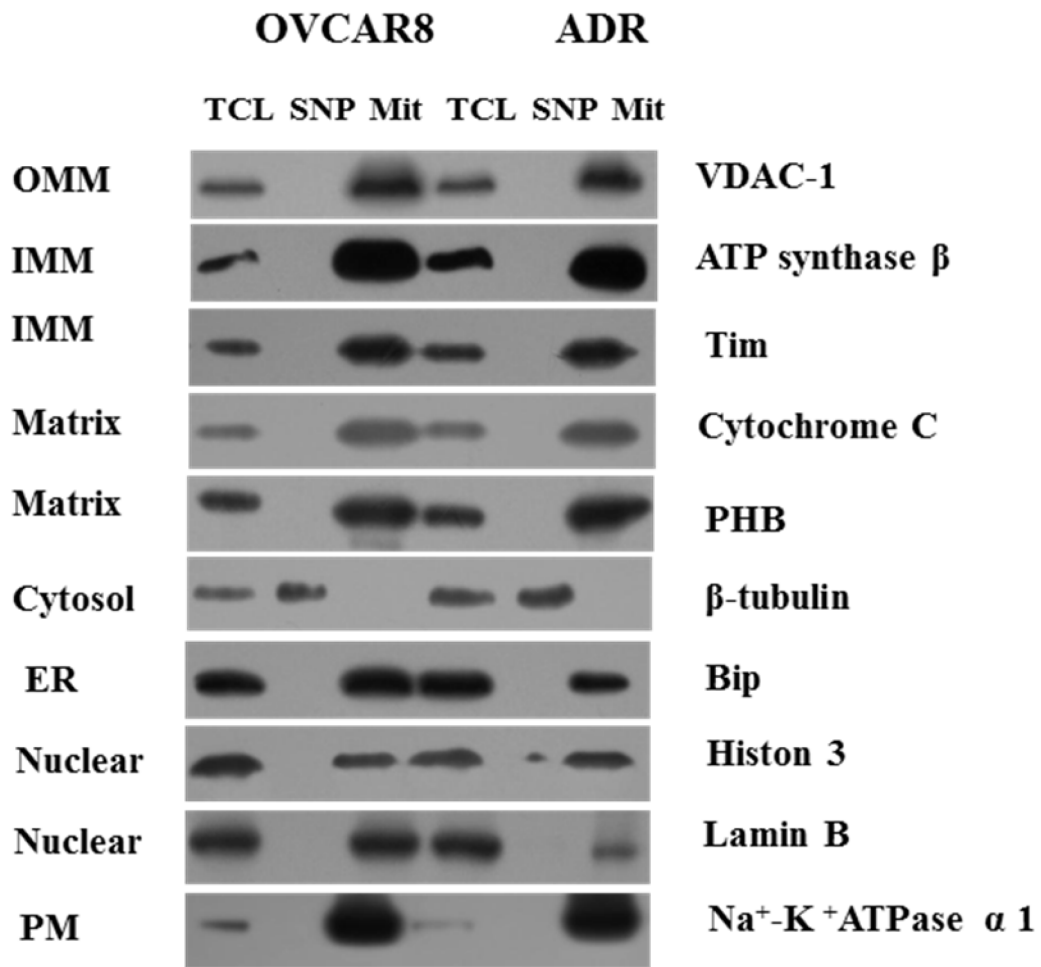


Figure S3

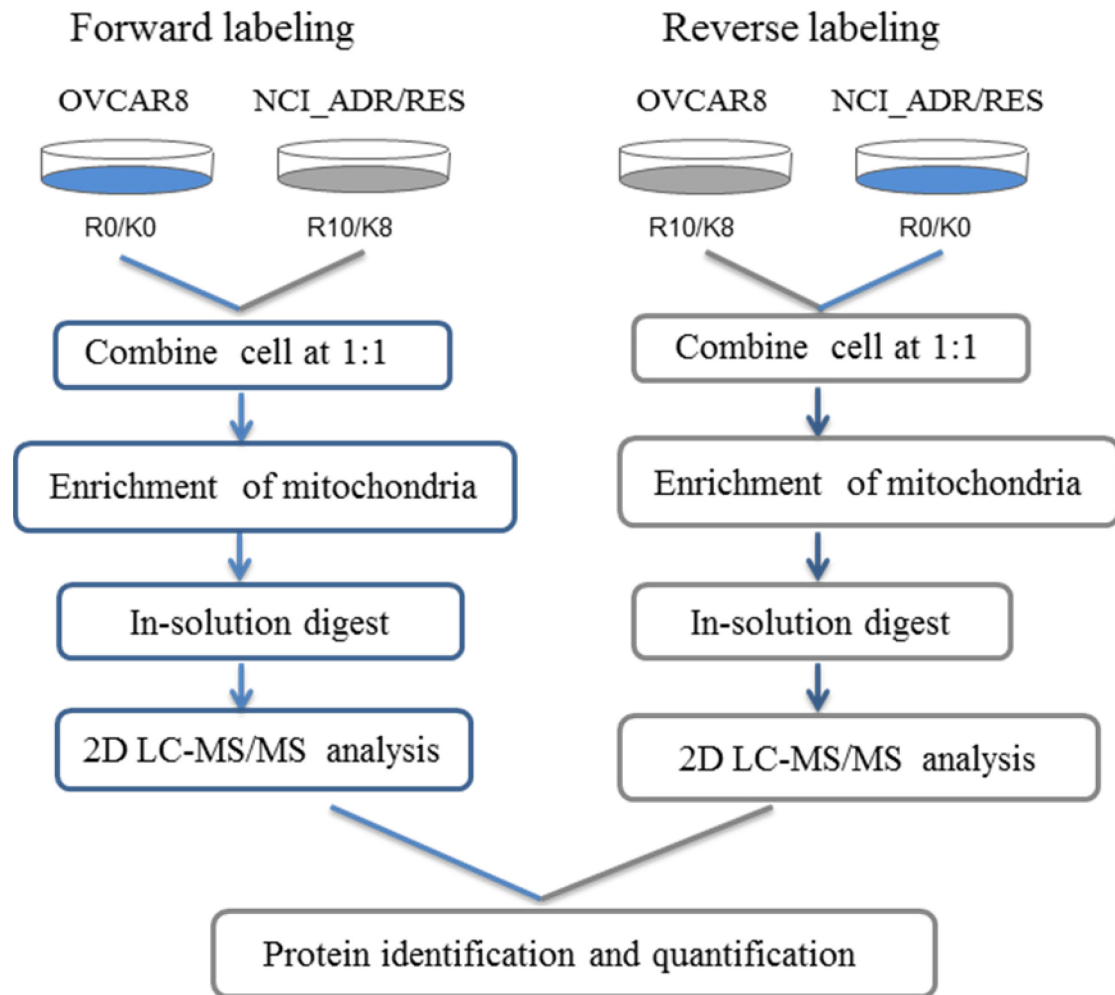


Figure S4

