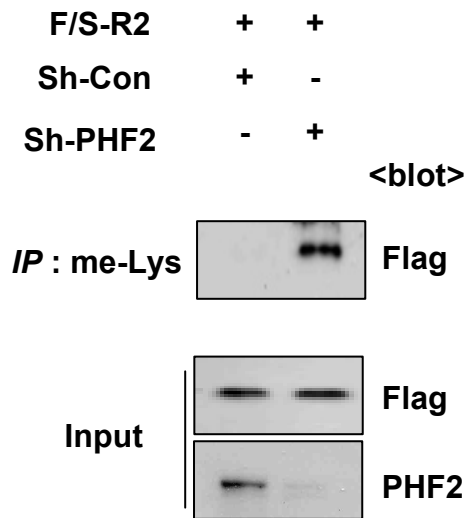
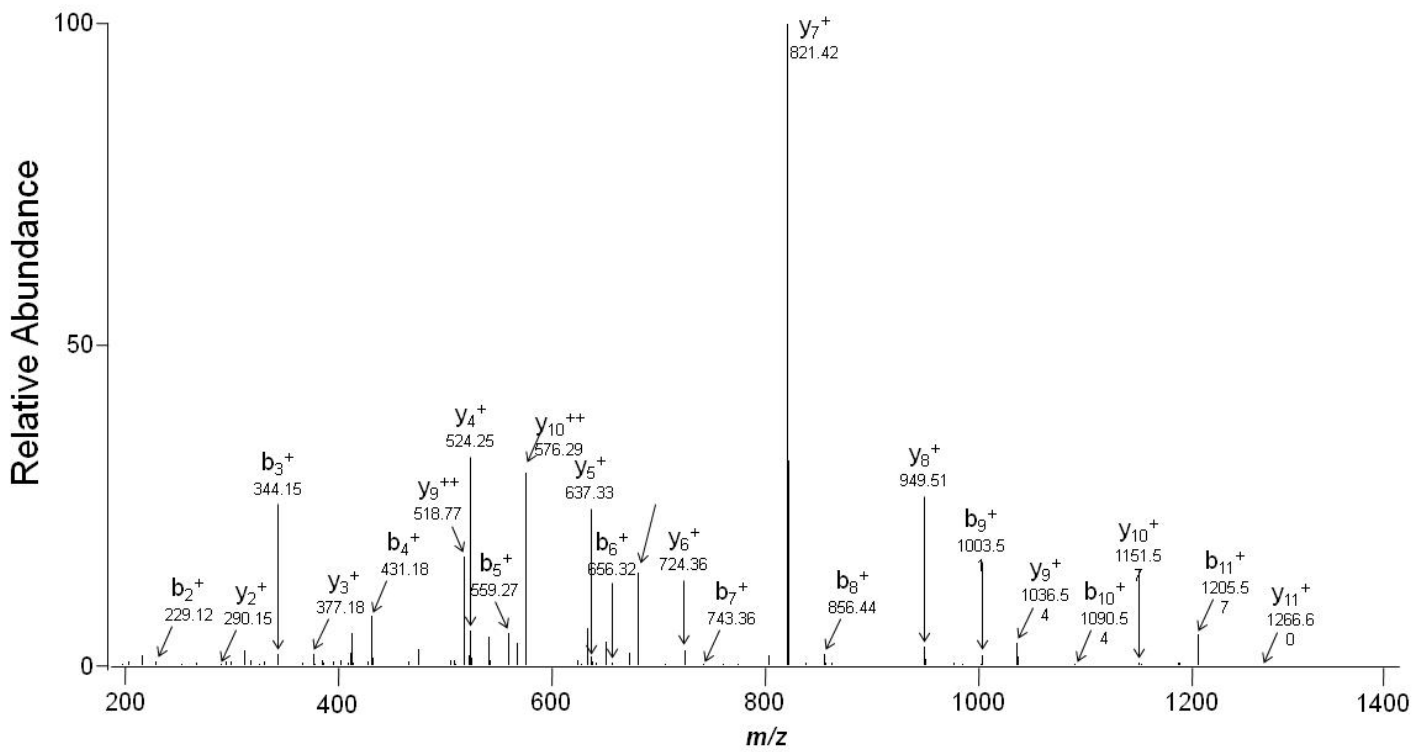


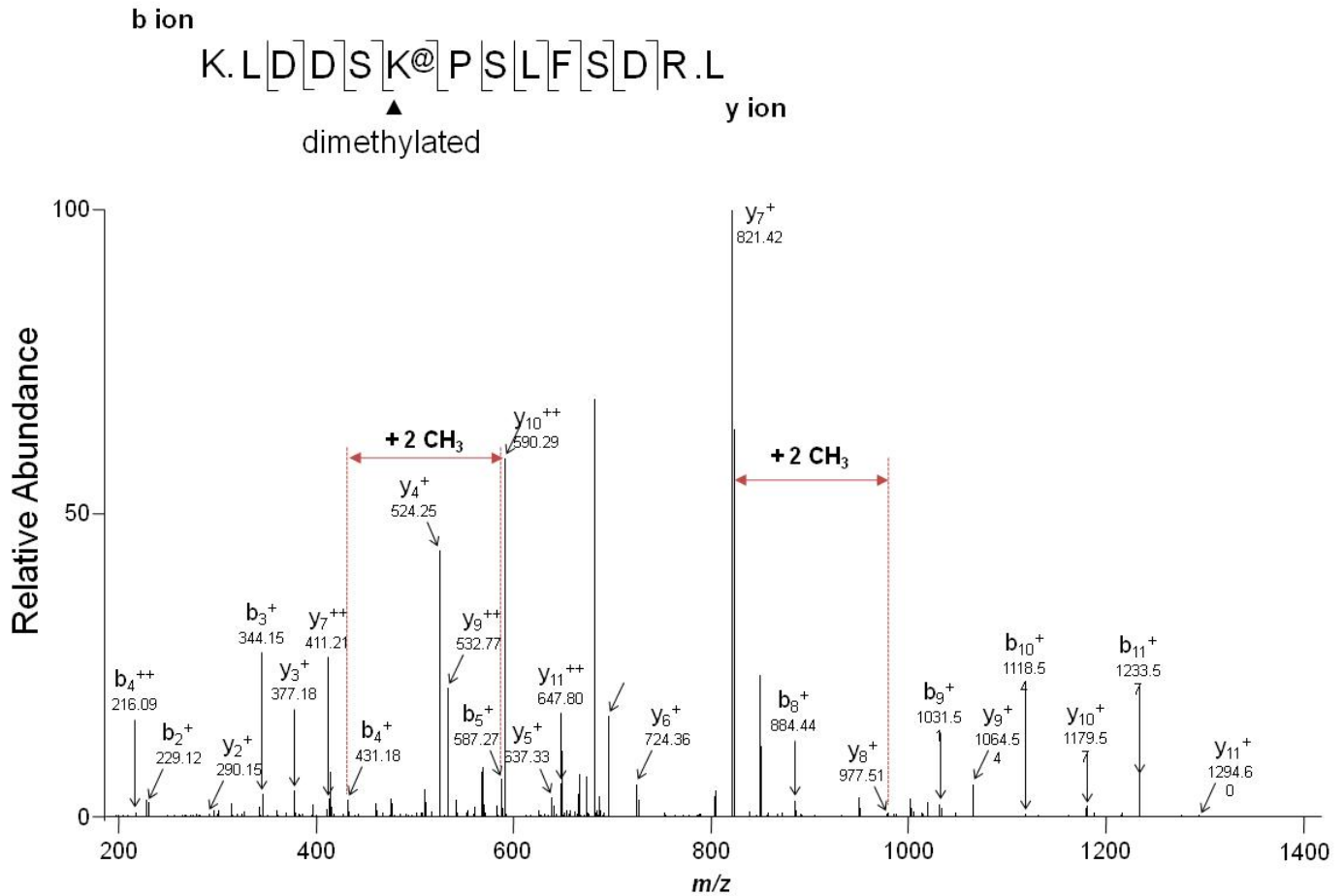
A**B**

b ion

K.L[D][D][S][K][P][S][L][F][S][D]R.L

y ion



C

Supplemental Figure 4. C2C12 stable cells expressing Sh-Con or Sh-PHF2 shRNA were further transfected with F/S-R2. Lysine methylation of R2 was detected by immunoprecipitation with anti-Lys-me antibody and immunoblotting with anti-Flag antibody (A). After two cell lines were lysed, F/S-R2 peptides from the lysates were purified by two-step affinity chromatography using streptavidin-affinity and Flag-affinity beads. The R2 peptide was separated by SDS-PAGE, and subjected to in-gel digestion. The LC-Mass spectra revealed that R2 peptide is demethylated (B) or di-methylated ($2CH_3$) at Lys245 (C).