

Supplemental Material to:

Yusong Guo and Adam D Linstedt

**Binding of the vesicle docking protein p115 to the GTPase
Rab1b regulates membrane recruitment of the COPI
vesicle coat**

Cellular Logistics 2013; 3(1)

<http://dx.doi.org/10.4161/cl.27687>

www.landesbioscience.com/journals/cellularlogistics/article/27687

Supplementary Figure Legends

Fig. S1. Co-immunoprecipitation of p115 with Rab1b.

HeLa cells were untransfected or transfected with HA-tagged Rab1b and immunoprecipitation was carried out using mouse anti-HA antibodies. Recovery of p115 was determined by immunoblot using rabbit anti-p115 antibody and compared to a 1% loading controls.

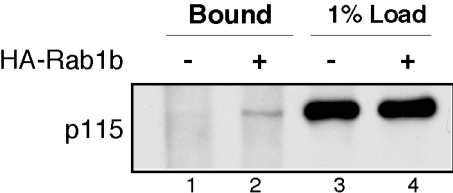
Fig. S2. Binding of p115 cc2 domain to Rab1b but not Rab27b.

Glutathione beads bearing similar amount of GST or GST-p115-cc2 were incubated with cell lysates from HeLa cells transfected with HA-Rab1b and GFP-Rab27b. Recovery of HA-Rab1b or GFP-Rab27b was determined by immunoblotting with mouse anti-HA antibody or mouse anti-GFP antibody.

Figure S3. Rescue of Golgi morphology and Rab1b membrane association with wildtype p115.

Cells were mock transfected (**A-D**) or transfected with p115 siRNA (**E-H**) and re-transfected after 48 h with plasmid encoding Myc-tagged bovine p115. After an additional 24 h, the cells were stained using rabbit anti-Rab1b antibody and anti-Myc p115 antibody. Bar=10 μ m.

FigS1



FigS2

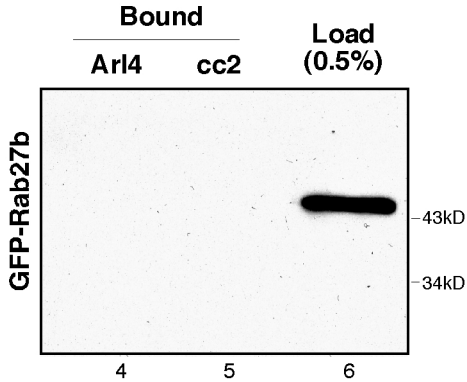
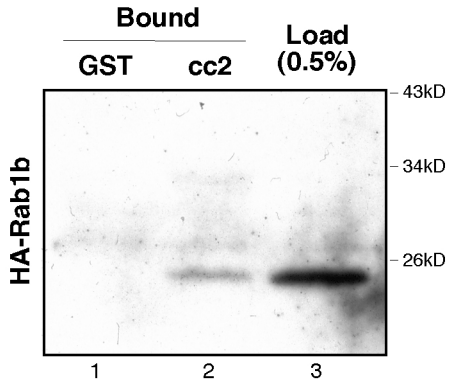


Fig. S3

