

## Supplemental Information

### PUBMED EXAMPLES OF SEARCH STRATEGY

(“gestational weight gain” OR “maternal obesity” OR “maternal overweight” OR “maternal BMI” OR (pregnancy AND BMI) OR (gestation AND BMI)) AND (“childhood wheeze” OR “childhood asthma” OR “reactive airway disease”) n=5

(pregnancy AND (BMI OR obesity OR overweight OR weight gain)) AND (“childhood wheeze” OR “childhood asthma” OR “reactive airway disease”) n=11

(“maternal obesity” OR “gestational weight gain”) AND (asthma OR wheeze) n=17

(“maternal obesity” OR “maternal overweight” OR “pregnancy obesity” OR “prepregnancy obesity” OR “gestational weight gain” OR “maternal complication” OR “pregnancy complication”) AND (asthma OR wheeze OR (childhood AND respiratory)) n=28

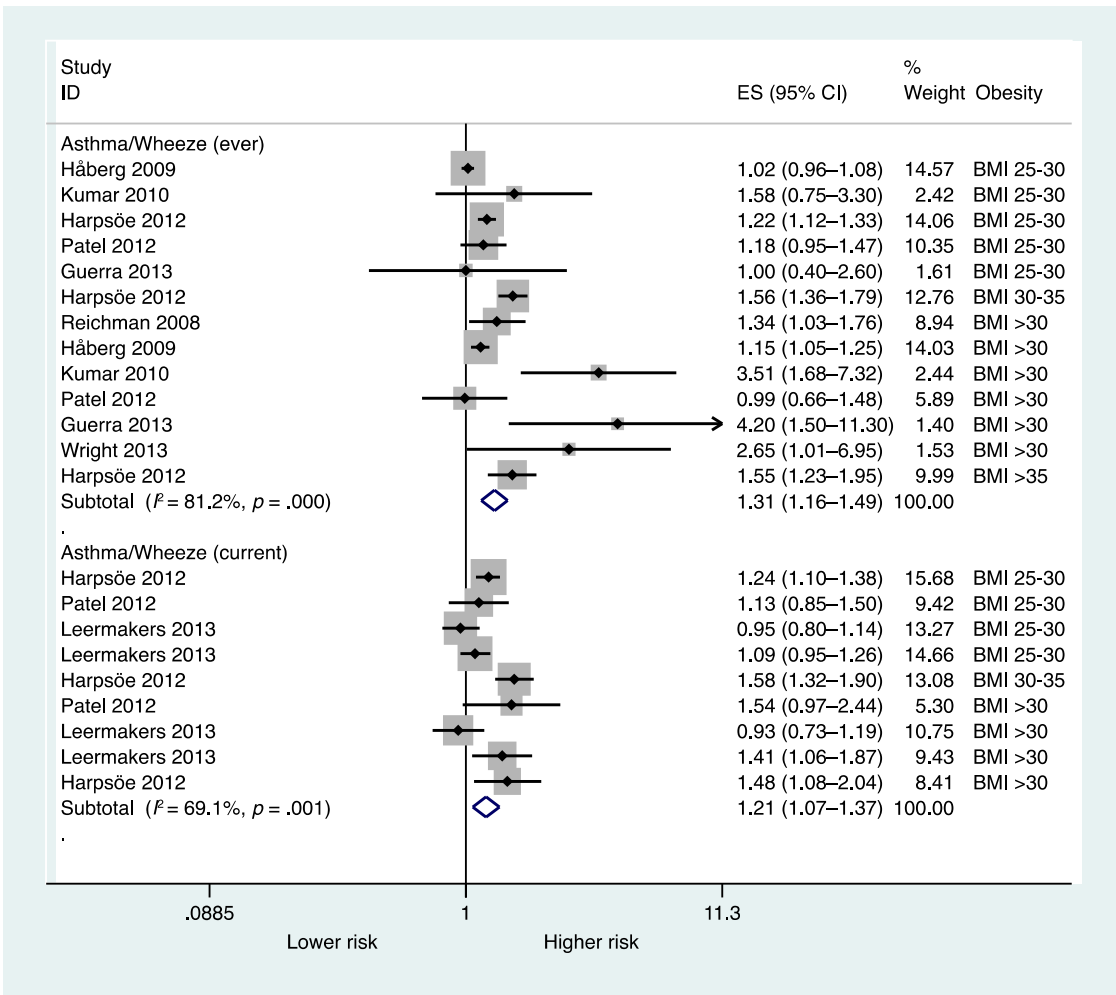
(“gestational weight gain” OR “maternal obesity” OR “maternal overweight” OR “pregnancy complication”) AND (lung OR asthma OR wheeze OR respiratory) n=56

Pregnancy[Mesh] AND (Obesity[Mesh] OR Weight[Mesh]) AND (Asthma[Mesh] OR Wheeze[Mesh]) AND Humans[Mesh] n=160

(pregnancy AND (BMI OR obesity OR overweight OR weight gain)) AND (asthma OR wheeze) n=201

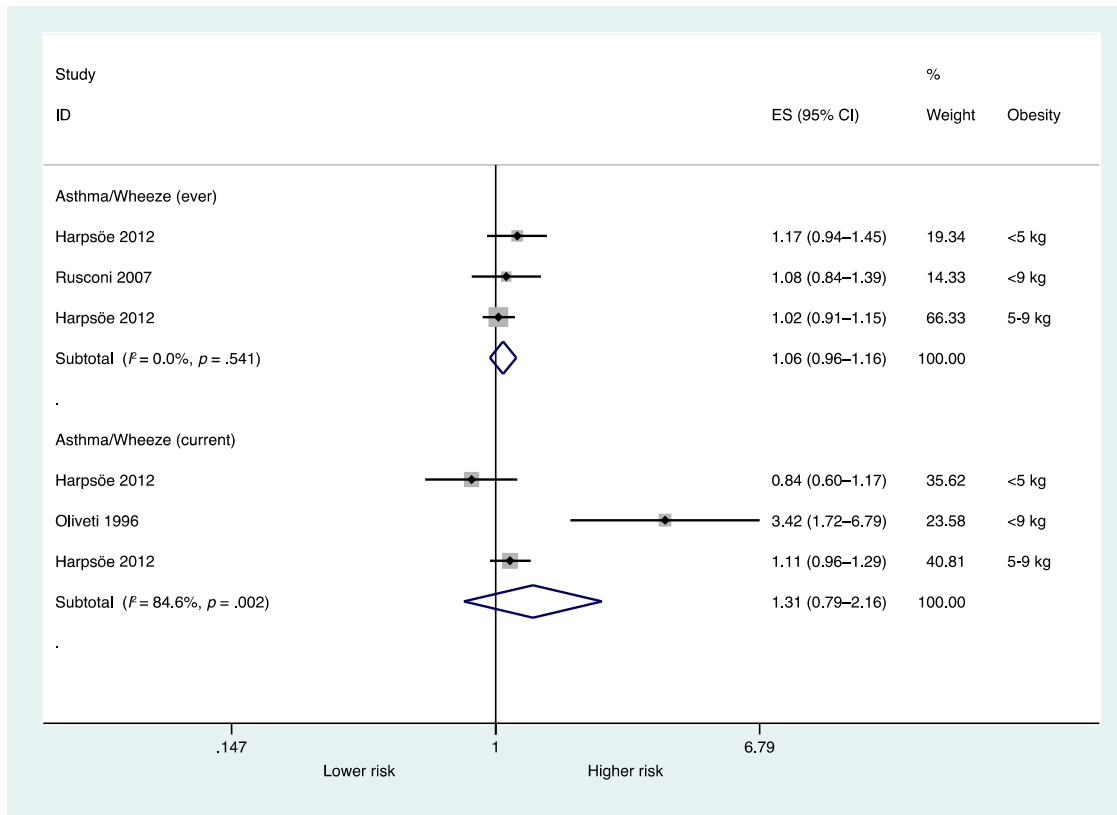
(maternal obesity OR gestational weight gain) AND (asthma OR wheeze OR respiratory) n=299

(pregnancy OR pregnant OR gestation) AND (BMI OR obesity OR overweight OR weight gain) AND (asthma OR wheeze OR respiratory) AND (Humans[Mesh]) n=450



**SUPPLEMENTAL FIGURE 6**

Odds of asthma or wheeze by maternal BMI category. Maternal obesity by BMI category was significantly associated with asthma or wheeze ever and current asthma or wheeze during childhood. Note that ORs are for overweight and obese (BMI >25) as compared with the “normal weight” category (BMI ~18.5–24.9). Some studies had ≥2 subgroups and may have >1 entry for the same outcome.



**SUPPLEMENTAL FIGURE 7**

Odds of asthma or wheeze with low GWG. Subnormal maternal GWG was not significantly associated with asthma or wheeze ever or with current asthma or wheeze during childhood. Note that categories of GWG vary between studies.