

Additional File 5. Figure S3

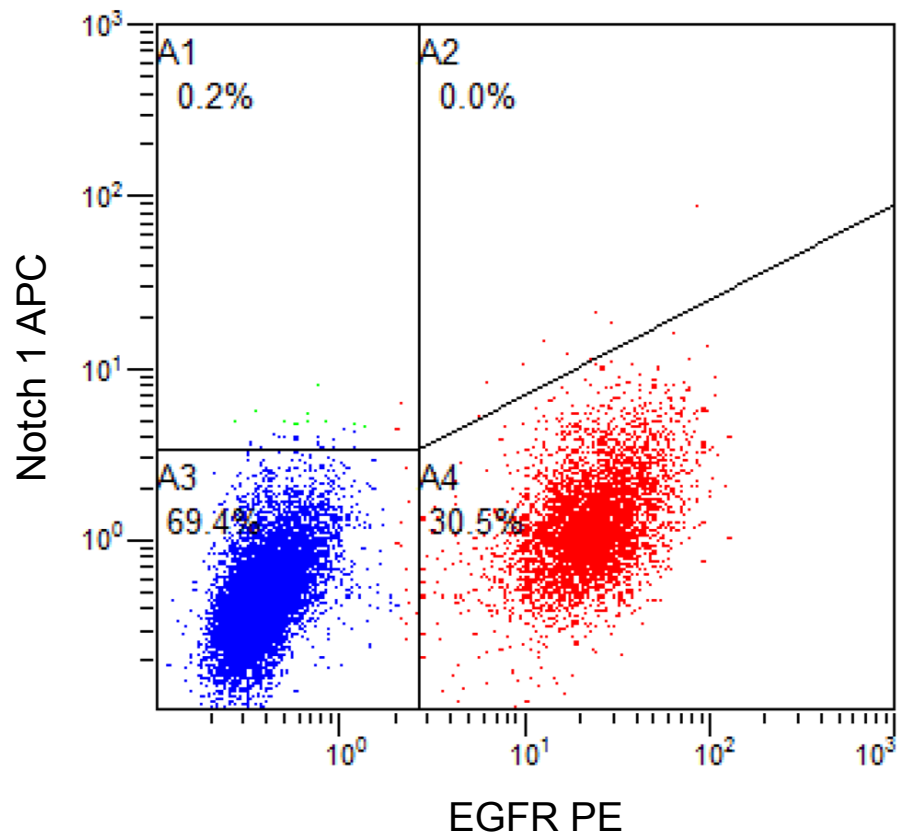


Figure S3. FACS sorting of Luminal (pLUM) and Luminobasal (pLB) subpopulations. pLUM and pLB cells were taken from culture and mixed in equal ratio, then sorted with Epidermal Growth Factor Receptor (EGFR-PE; x-axis) and Notch1-APC (y-axis). pLB cell population (red) is positive for EGFR, while pLUM cell population (blue) is EGFR negative.