

1 **Supplemental Figures**

2 **Figure S1. The stationary-phase yeast form of the *cho1Δ/Δ* mutant exhibits increased exposure**  
3 **of β(1-3)-glucan.** Secondary immunofluorescence using an anti-β(1-3)-glucan primary antibody was  
4 used on the strains that were grown overnight in YPD. Strains were fixed with formaldehyde prior to  
5 staining.

6  
7 **Figure S2. β(1-3)-glucan and Dectin-1 co-staining of yeast reveals overlapping staining patterns.**  
8 Top row panels: Bright-field optics. Middle row of panels: Staining with anti-β(1-3)-glucan antibody  
9 and Cy3 (red) conjugated secondary antibody. Bottom row of panels: Staining with sDectin-1-Fc and  
10 Cy2 (green) conjugated 2 secondary antibody. Formaldehyde fixation step was omitted.

11  
12 **Figure S3. Hyphae co-stain similarly with β(1-3)-glucan antibody and sDectin-1-Fc. A.** The  
13 number of hyphae that stained with β(1-3)-glucan (green) and Dectin-1-Fc (red) were independently  
14 divided by the total number of hyphae apparent by bright field optics to calculate the percent stained for  
15 each fluor. WT, wild-type; *cho1reint* (*cho1Δ/Δ::CHO1*); *psd1reint* (*psd1Δ/Δ::PSD1*); *p1p2Δ* (*psd1Δ/Δ*  
16 *psd2Δ/Δ*); *p1p2Δ reint* (*psd1Δ/Δ psd2Δ/Δ::PSD1*); (n=20 for each strain). **B.** The scale on the Y axis is  
17 an arbitrary scale created based on the rainbow display in NIS elements software. Representatives of  
18 staining levels (0-2) with each fluor are shown for β(1-3)-glucan and Dectin-1. See Materials and  
19 Methods for more detail.

20  
21 **Figure S4. The *cho1Δ/Δ* mutant elicits TNFα from RAW 264.7 macrophages in a Dectin-1-**  
22 **dependent manner.**

23 **A** The TNFα-specific ELISA was used to measure TNFα elicited from macrophages in response to *C.*  
24 *albicans* challenge.

25 **B** The TNF-α-specific ELISA was used to measure TNF-α elicitation from the *cho1Δ/Δ* mutant +/- pre-  
26 treatment with anti-Dectin-1 neutralizing antibody. \* p-value < 0.05

Figure S1

A

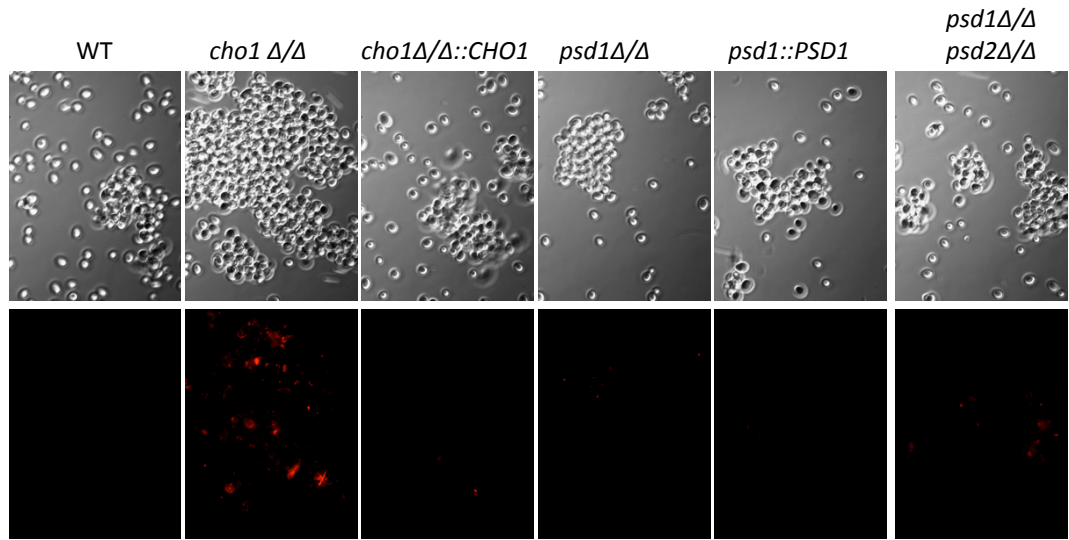


Figure S2

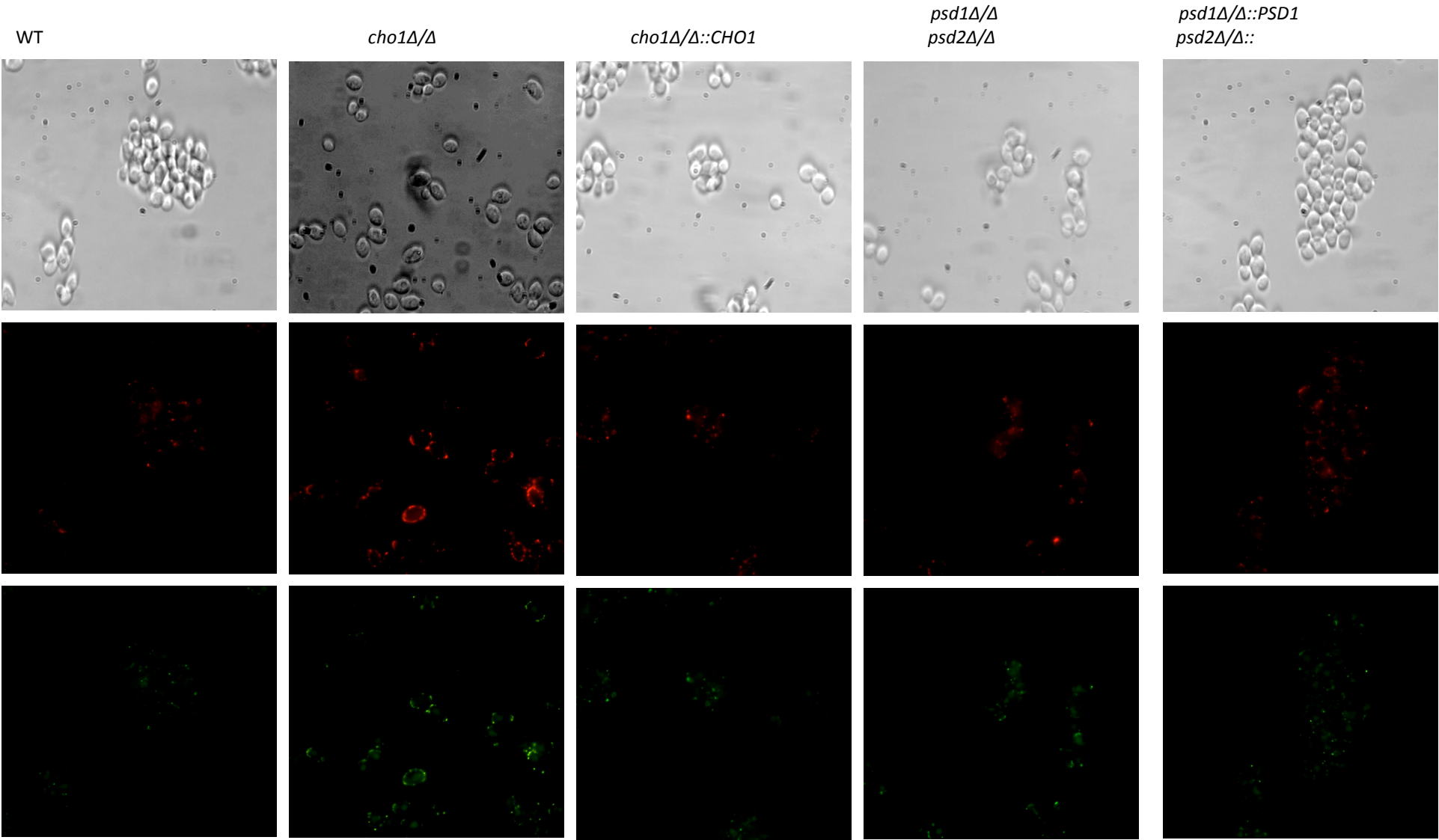
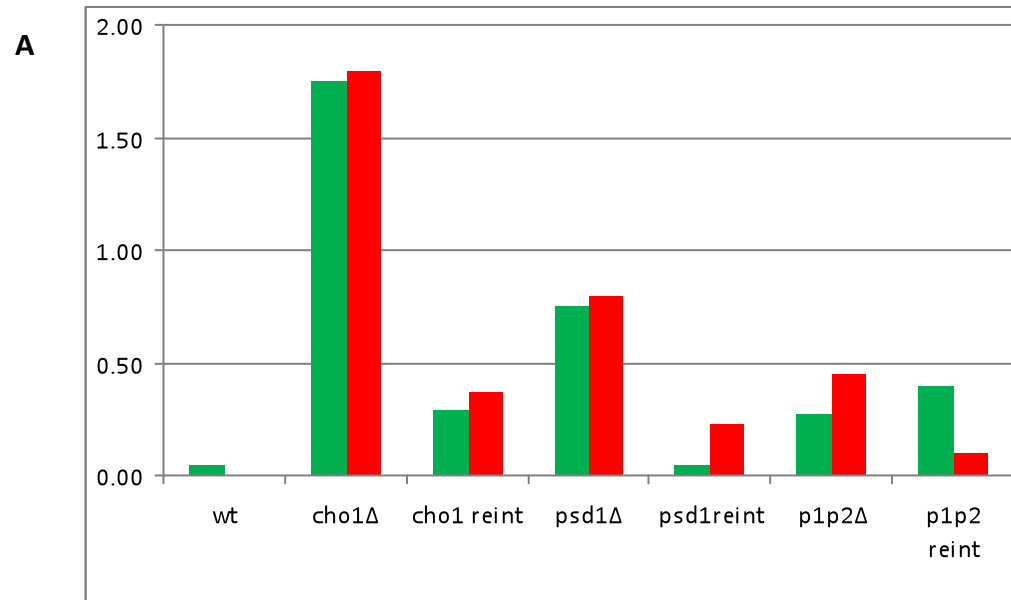
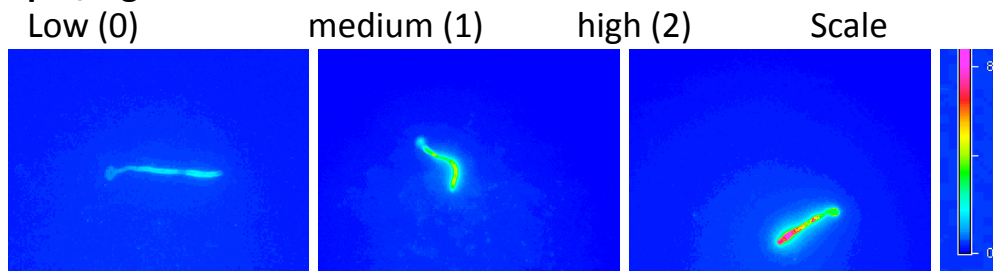


Figure S3



**B  $\beta$ -1/3 glucan**



**Dectin-1**

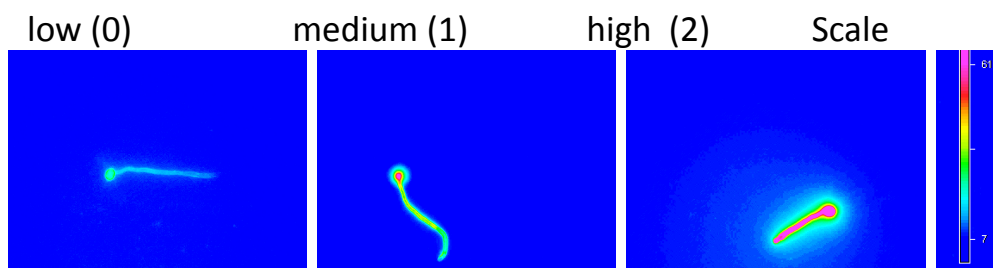
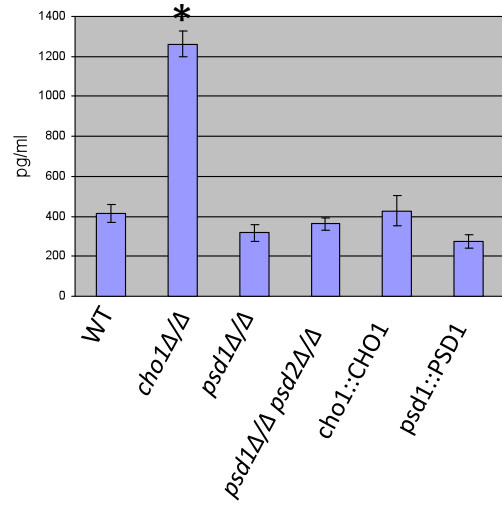


Figure S4

A



B

