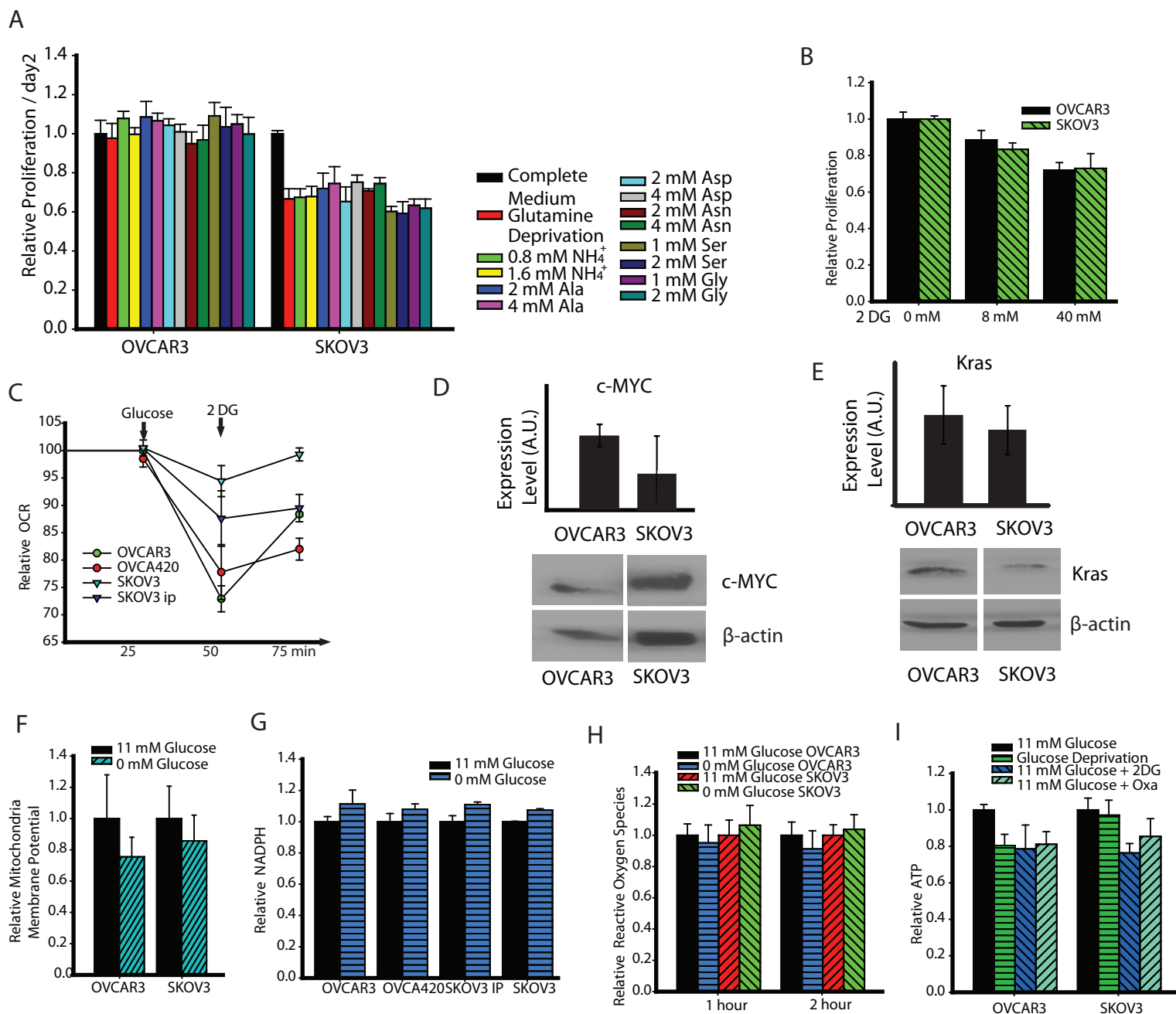


Figure S4



**Supplementary Figure S4.** (A) Addition of nitrogenous sources (NH<sub>4</sub><sup>+</sup>) and amino acids increasing tumor growth (Ala, Asp, Asn, Ser, Gly) could not rescue Gln deprivation in short term / 48 hours. (B) Effect of different 2-DG concentrations on OVCAR3 and SKOV3's proliferation. (C) Effect of glucose on OCR. Data in A-C are expressed as mean ± SD, n≥9. (D,E) Western blot of c-MYC (D) and k-Ras (E) expression levels in low-invasive OVCA (OVCAR3) and high-invasive (SKOV3) OVCA cells. n≥3. (F) Glucose's effect on mitochondrial membrane potential. (G,H) Glucose's effect on NADPH and ROS generation. (I) Glucose deprivation's effect on ATP content.