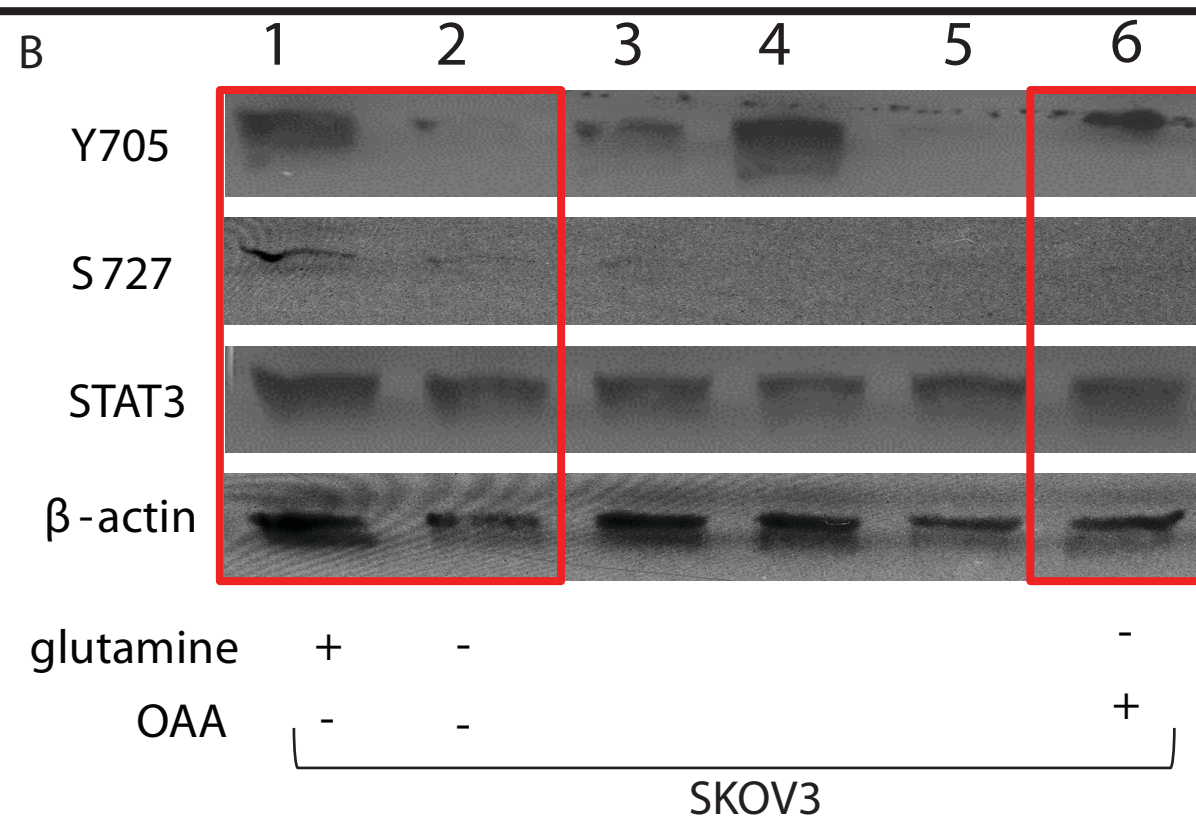
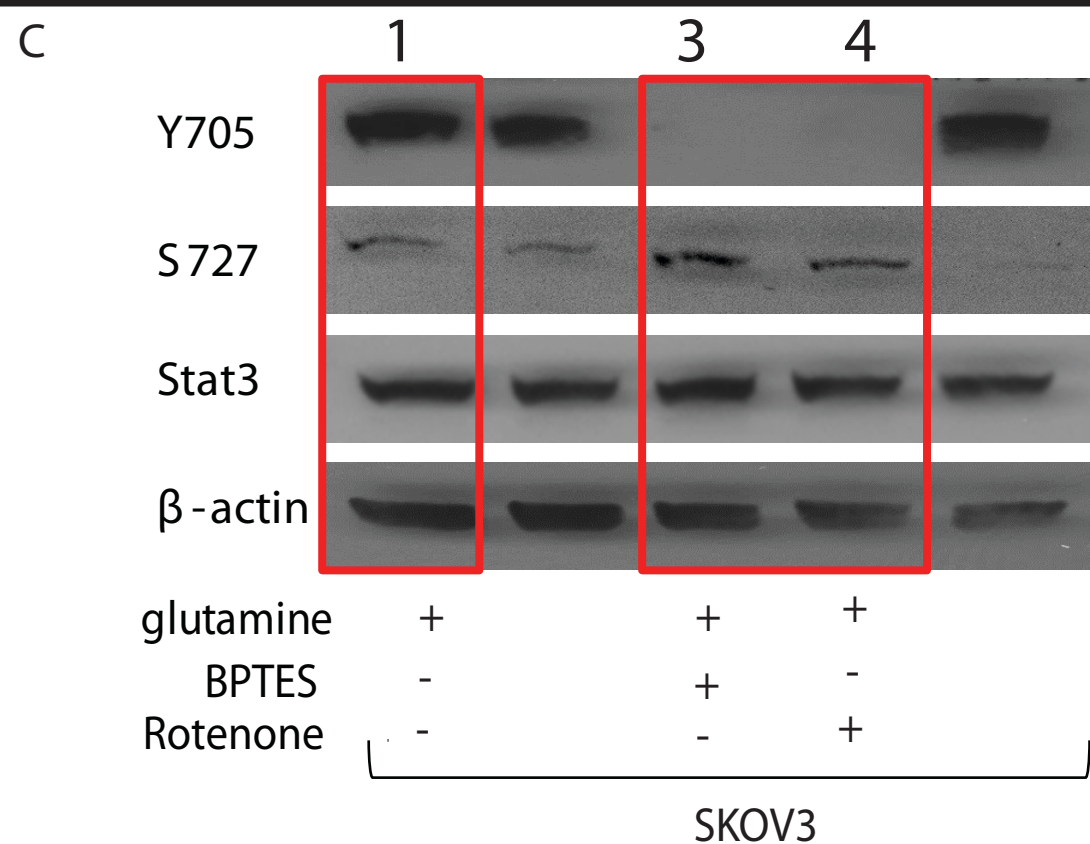


For Figure 6D, we used the data from A. The red boxes indicate the lanes which were used in Figure 6D. Their corresponding conditions are indicated below. We reorganized the main figure 6D, so that complete medium (lane 2) is in first column, glutamine deprivation (lane 1) in second column and α-KG addition is in third column (lane 4).



For Figure 6E, we used the data from B. The red boxes indicate the lanes which were used in Figure 6E. Their corresponding conditions are indicated below. We reorganized the main figure 6E so that complete medium (lane 1) is in first column, glutamine deprivation (lane 2) in second column and α-KG addition is in third column (lane 6).



For Figure 6F, we used the data from C. The red boxes indicate the lanes which were used in Figure 6F. Their corresponding conditions are indicated below. We reorganized the main figure 6F so that complete medium (lane 1) is in first column, BPTES addition (lane 3) in second column and Rotenone addition is in third column (lane 4).