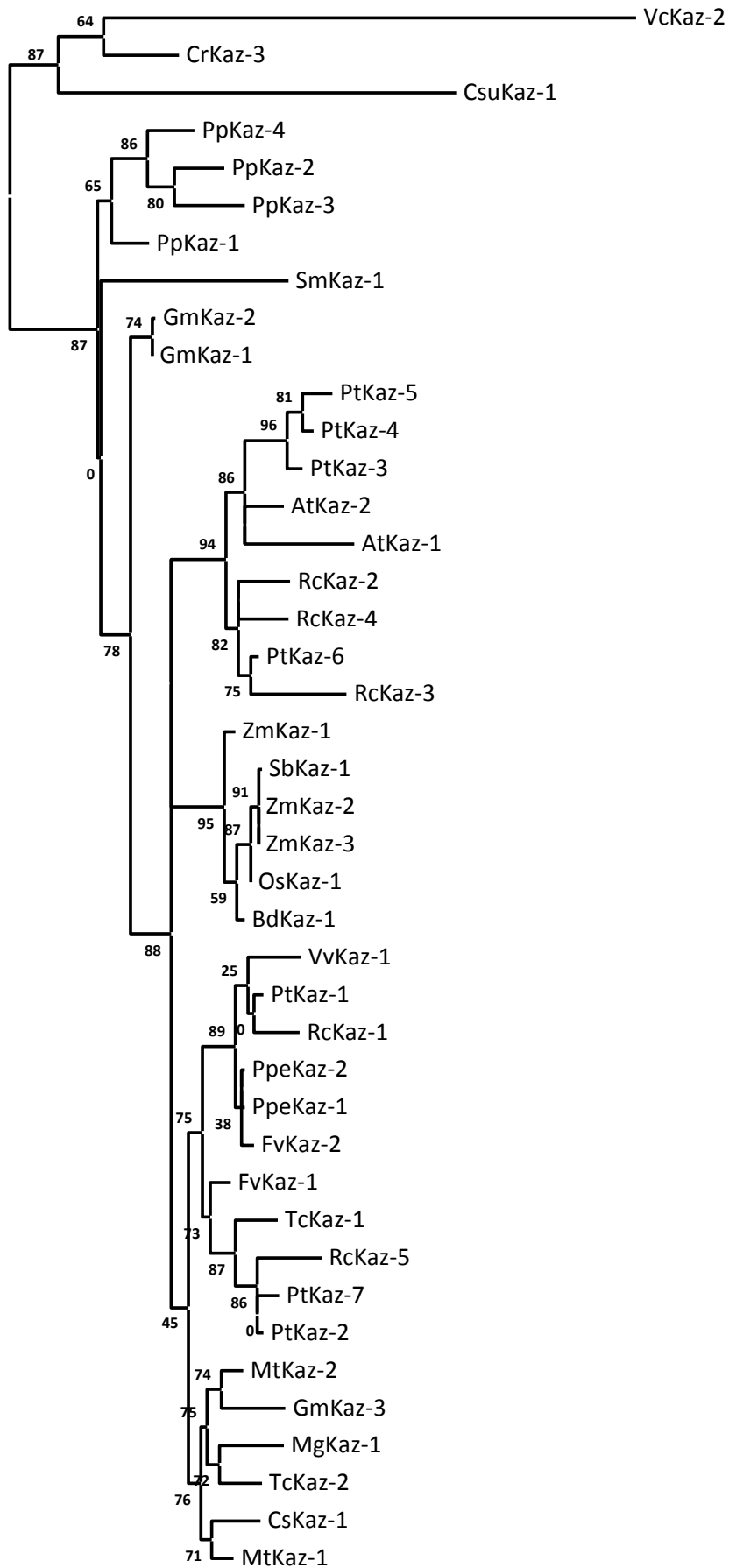


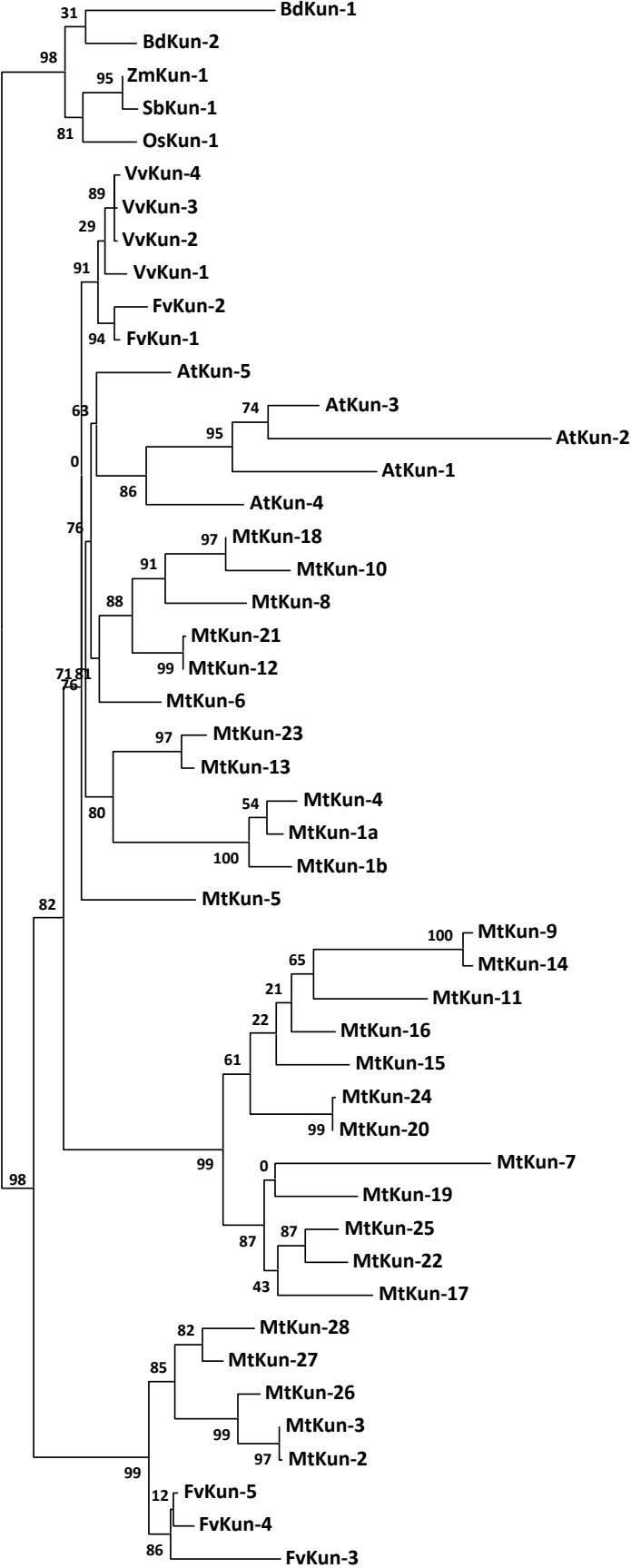
Additional File 2. Phylograms of the peptidase inhibitor families. The amino acid sequences were aligned by MUSCLE and analysed with the PhyML method. Approximate likelihood-ratio test values are indicated. Rc, *Ricinus communis*; Pt, *Populus trichocarpa*; Mt, *Medicago truncatula*; Gm, *Glycine max*; Cs, *Cucumis sativus*; Ppe, *Prunus persica*; Fv, *Fragaria vesca*; At, *Arabidopsis thaliana*; Tc, *Theobroma cacao*; Vv, *Vitis vinifera*; Mg, *Mimulus guttatus*; Sb, *Sorghum bicolor*; Zm, *Zea mays*; Os, *Oryza sativa*; Bd, *Brachypodium distachyon*; Sm, *Selaginella moellendorffii*; Pp, *Physcomitrella patens*; Cr, *Chlamydomonas reinhardtii*; Vc, *Volvox carteri*; Csu, *Coccomyxa subellipsoidea*; Mp, *Micromonas pusilla*.

A. I1 Kazal.



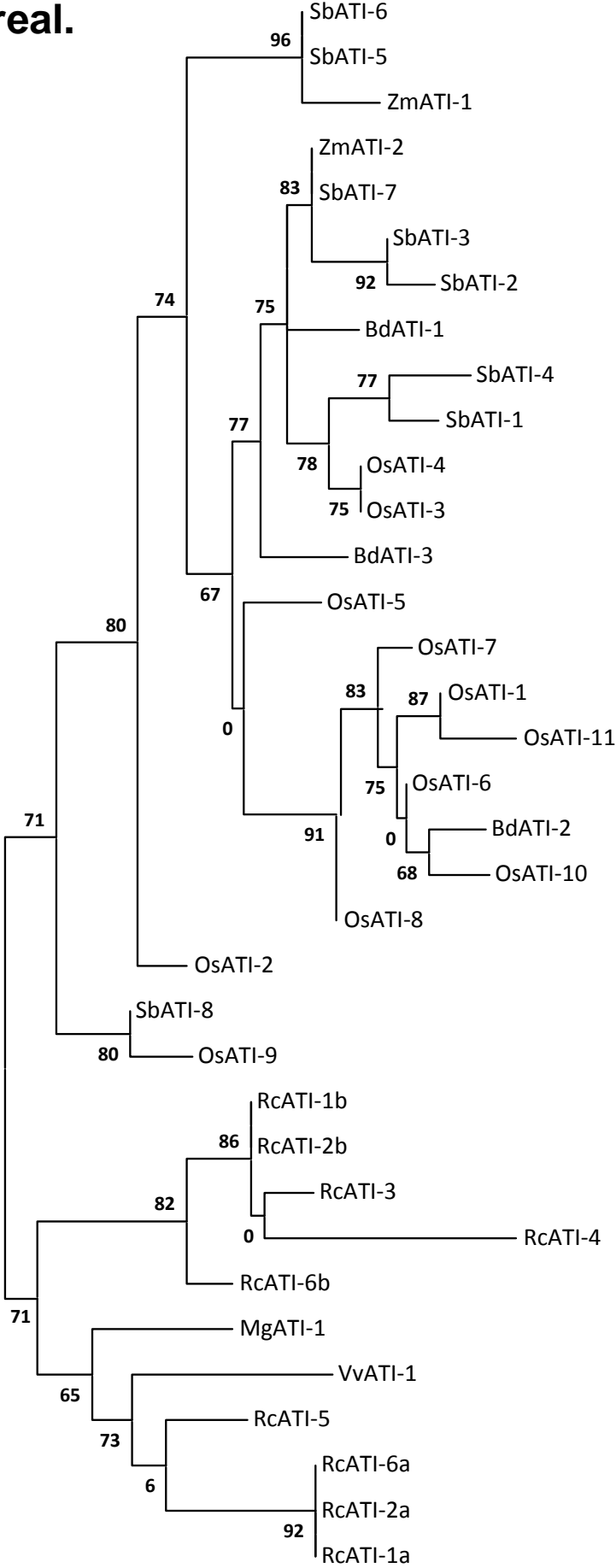
0.2

B. I3 Kunitz-P.

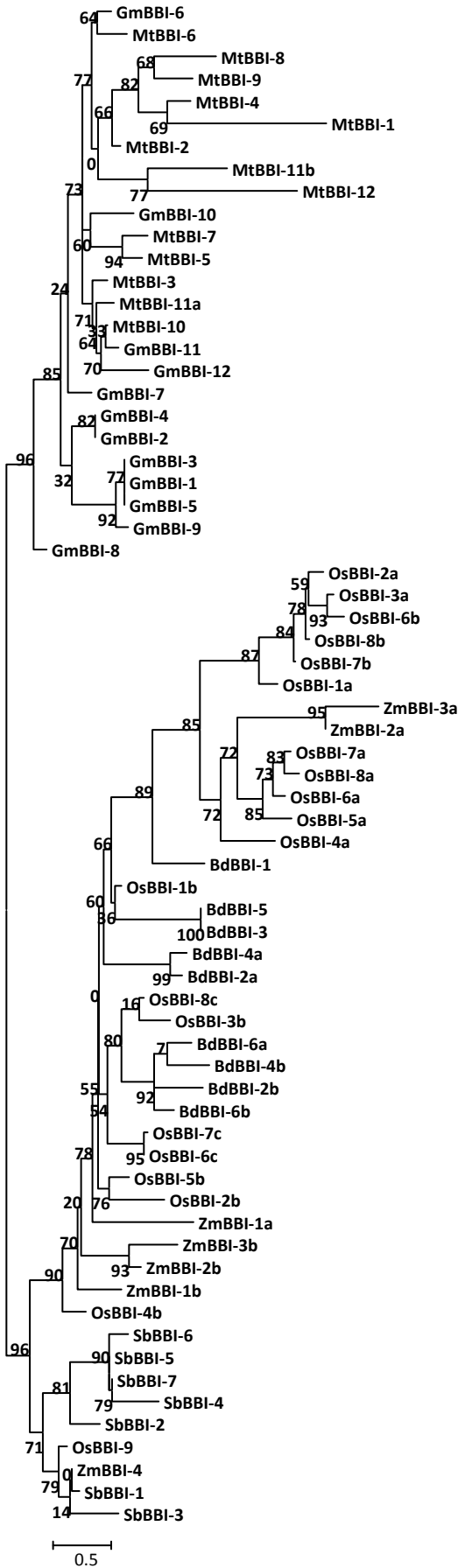


0.2

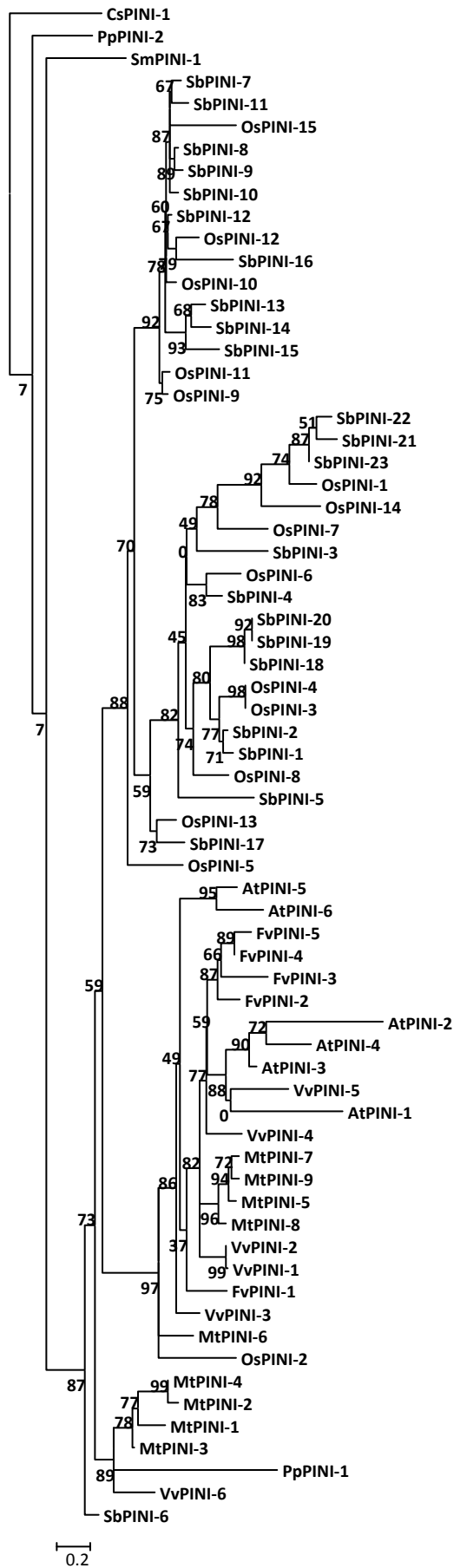
D. I6 Cereal.



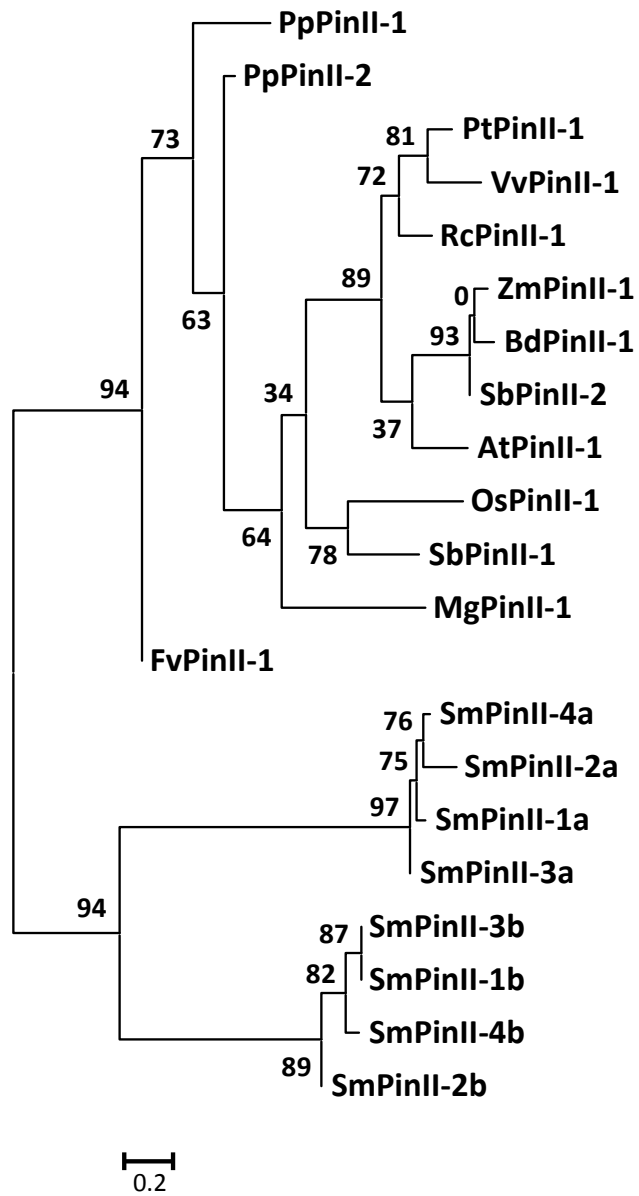
E. I12 Bowman-Birk.



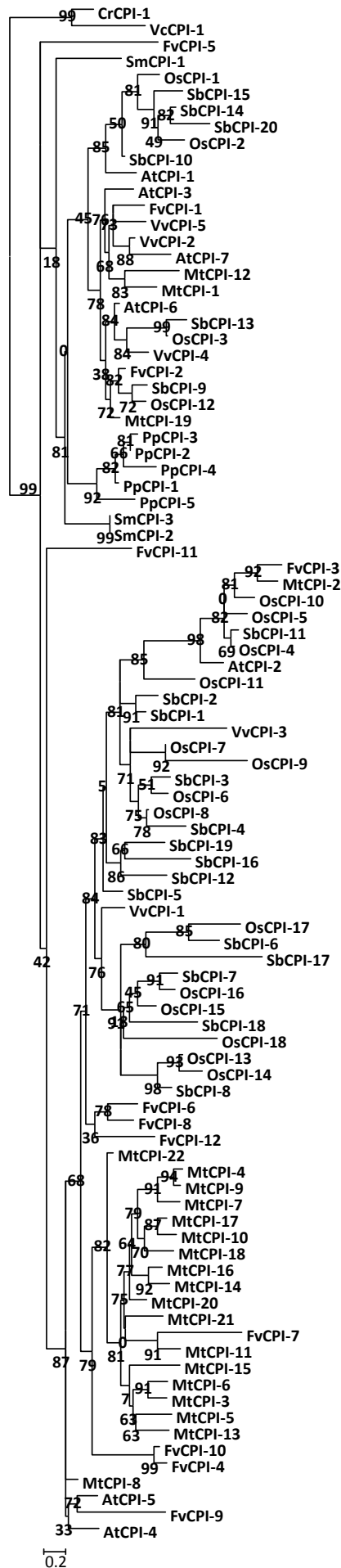
F. I13 Pin-I.



G. I20 Pin-II.



H. I25 Cystatin.



0.2

I. I51 Serine Carboxypeptidase Y Inhibitors (SCPYPInh).

