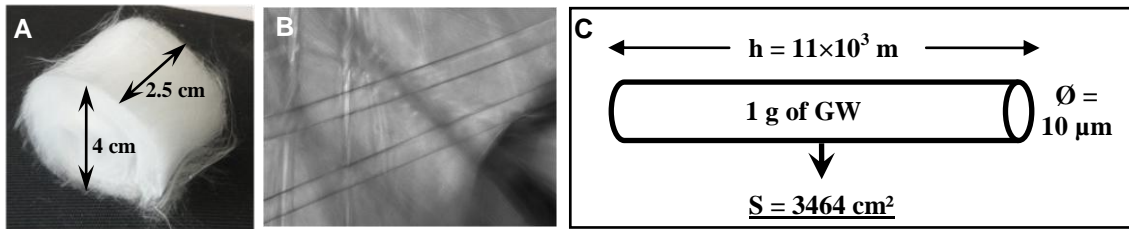


1  
2



**Additional file 1: Characteristics of 1g piece of glass wool (GW).** (A) Sizes of 1g GW piece ( $\text{Ø}$  and  $h$ ). (B) Determination of the GW fiber diameter by optical microscopy ( $10 \text{ }\mu\text{m}$ ;  $n = 10$ ). (C) The GW density ( $1154.7 \pm 57.6 \text{ kg/m}^3$ ) and the fiber diameter allowed the schematic representation of 1g of GW as a cylinder of  $11 \times 10^3 \text{ m}$  length offering a surface of  $3464 \text{ cm}^2$ .

3  
4