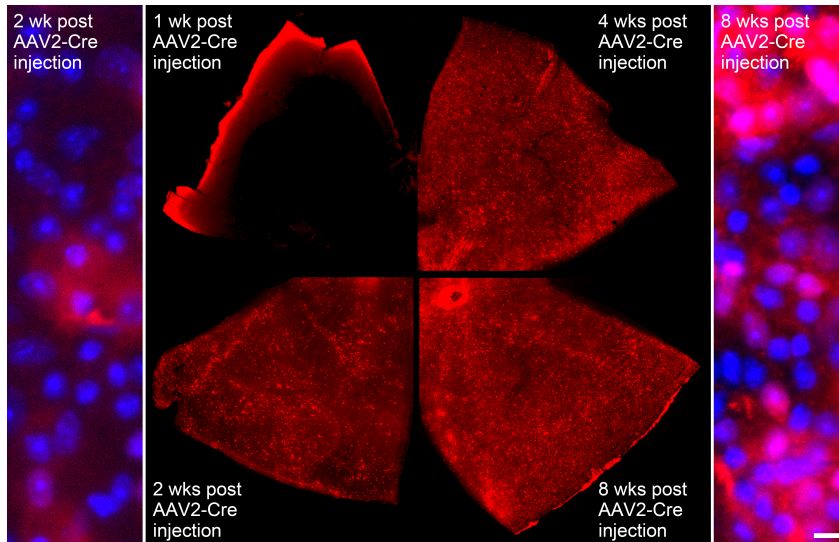


## Additional File 1

### Supplemental Figure 1



**Supplemental Figure 1 Optimal viral transduction and gene expression following intravitreal injection of AAV2-Cre/GFP.** Outer panels indicate high magnification images of cells from the ganglion cell layer of retinal whole mounts from *Rosa26-Tomato<sup>fl/fl</sup>* mice intravitreally injected with AAV2-Cre/GFP 2 and 8 weeks prior. (Scale bar: 10  $\mu$ m) The inner panels illustrate low magnification images of whole-mounted retinas from the same *Rosa26-Tomato<sup>fl/fl</sup>* mice that were intravitreally injected 1, 2, 4, and 8 weeks prior to imaging. Expression of *td-Tomato* peaks as early as 4 weeks post AAV2-Cre injection.