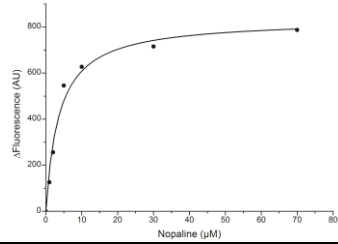


Fluorescence

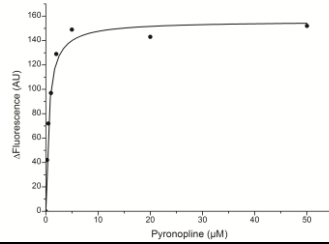
NocT_{wt}-Nopaline

$$K_D = 3.7 \pm 0.6 \mu\text{M}$$



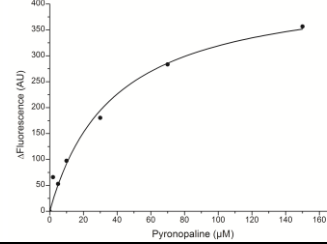
NocT_{wt}-Pyronopaline

$$K_D = 0.5 \pm 0.07 \mu\text{M}$$



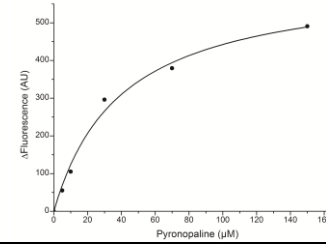
NocT_{M117S}-Pyronopaline

$$K_D = 37.8 \pm 9 \mu\text{M}$$



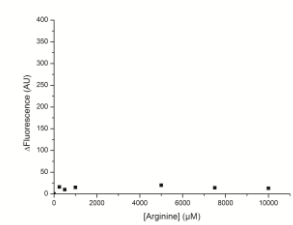
NocT_{M117N}-Pyronopaline

$$K_D = 39.9 \pm 7 \mu\text{M}$$



NocT_{wt}-Arginine

No interaction



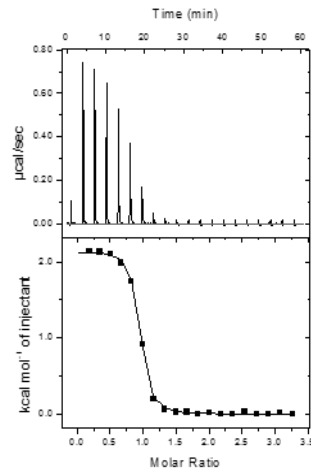
ITC

NocT_{wt}-Nopaline

Non Acquired

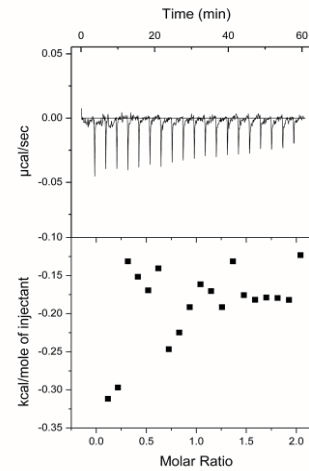
NocT_{wt}-Pyronopaline

$$K_D = 0.58 \pm 0.05 \mu\text{M}$$



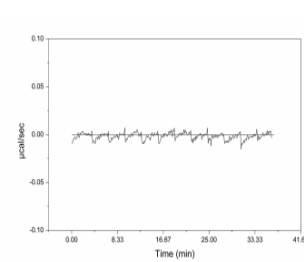
NocT_{wt}-Arginine

No interaction



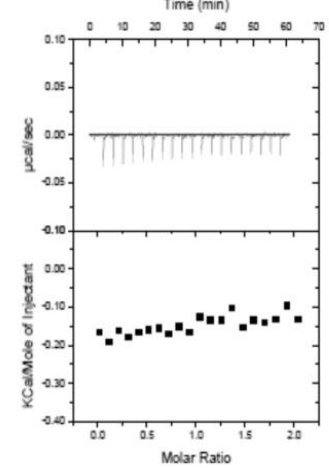
NocT_{wt}-Histidine

No interaction



NocT_{wt}-Ornithine

No interaction



ITC and Fluorescence K_D measurements.

NocT fluorescence monitoring upon titration with each ligand and fit (solid line) to a single binding model using Origin. Measures were done in triplicates.

NocT ITC : The top panel show heat differences upon injection of ligand and lower panel show integrated heats of injection and the best fit (solid line) to a single binding model using Microcal Origin.