

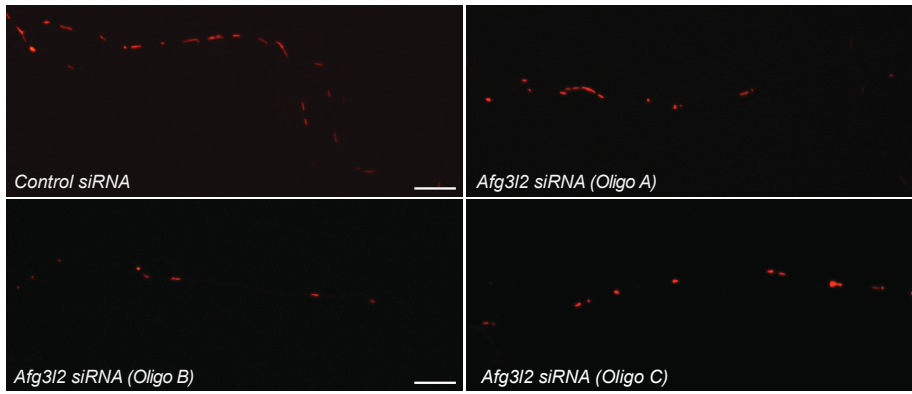
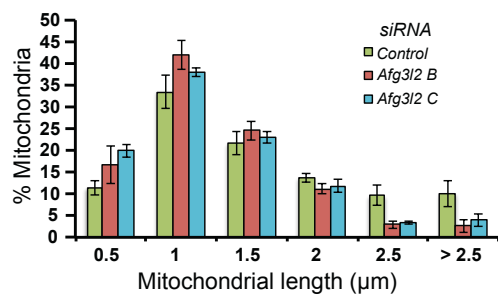
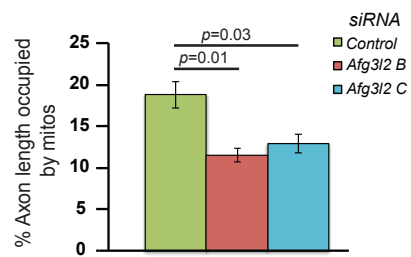
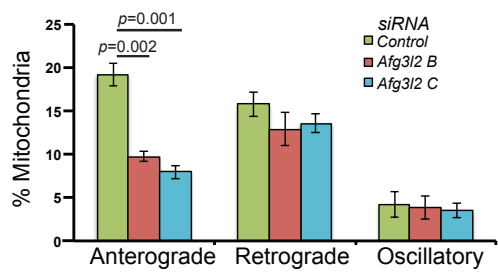
A**B****C****D**

Figure S1. Depletion of AFG3L2 causes mitochondrial defects

(A) Representative images of axonal mitochondria in neurons downregulated with control siRNA and three different *Afg3l2* siRNAs. Scale bar: 10 μ m. (B) The percentage of mitochondria belonging to a given length bin was averaged from 3 independent experiments (124-167 mitochondria were measured in each experiment). Bars represent SEM. p values were calculated with the χ^2 test. Control vs. *Afg3l2* (oligo B): $p = 0.008$; Control vs. *Afg3l2* (oligo C): $p = 0.009$. (C) Quantification of mitochondrial occupancy per axon ($n = 3$ experiments; at least 8 axons per experiment). (D) Quantification of mitochondrial transport types in the axon. Data represent mean \pm SEM of 3 independent experiments. At least 8 axons from each experiment were analyzed. p values in C and D were determined with Student's t -test.

[Unfortunately, in this article, which was first published online on March 28th 2014, a wrong graph was inserted as Supplementary Figure S1B. The mistake has now been corrected. We apologize for any inconvenience caused.]