

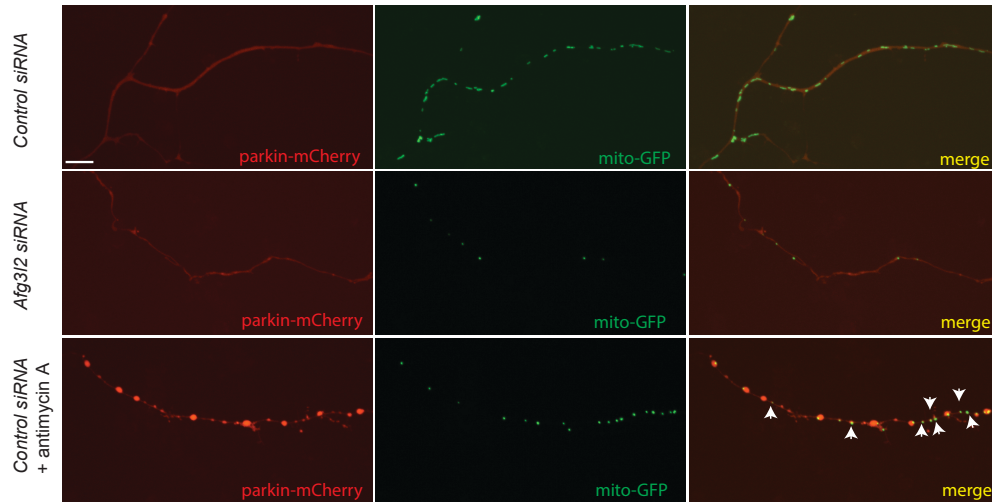
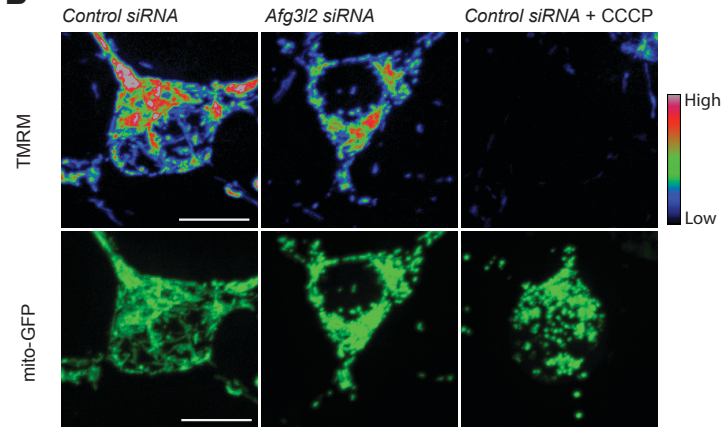
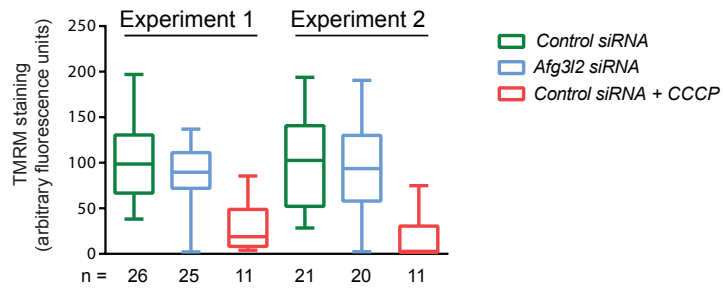
A**B****C**

Figure S2. Depletion of AFG3L2 does not recruit parkin to mitochondria or affect the mitochondrial membrane potential

(A) Representative images of axons from neurons transfected with parkin-mCherry, mito-GFP and either control or *Afg3l2* siRNAs. As a positive control, neurons were treated with antimycin A. Arrows point to colocalisation of parkin-mCherry and mito-GFP. Bar: 10 μ m. (B) Representative images of soma from neurons transfected with mito-GFP and either control or *Afg3l2* siRNAs, and stained with TMRM. As a positive control, neurons were treated with CCCP. The top panel shows the TMRM signal as pseudocolour-coded intensities, while the bottom panel displays the corresponding mitochondrial staining by mito-GFP. Bar: 10 μ m. (C) Boxplots of TMRM intensities for two independent experiments.