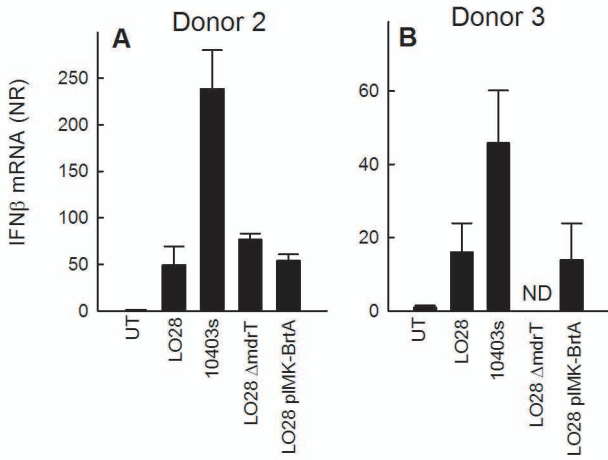


Figure S3



Supplementary Figure S3. IFN β induction by *L. monocytogenes* in human macrophages does not correlate with expression of the multidrug efflux pump MdrT. Human primary monocyte-derived macrophages from two independent donors were infected with the *L. monocytogenes* strains LO28 and 10403s or LO28 mutants with altered expression of the multidrug efflux pump MdrT (MOI 25). Total RNA was isolated 6 hrs p.i and RT-qPCR analysis for IFN β was performed. Data represents mean +/- SD of duplicates.