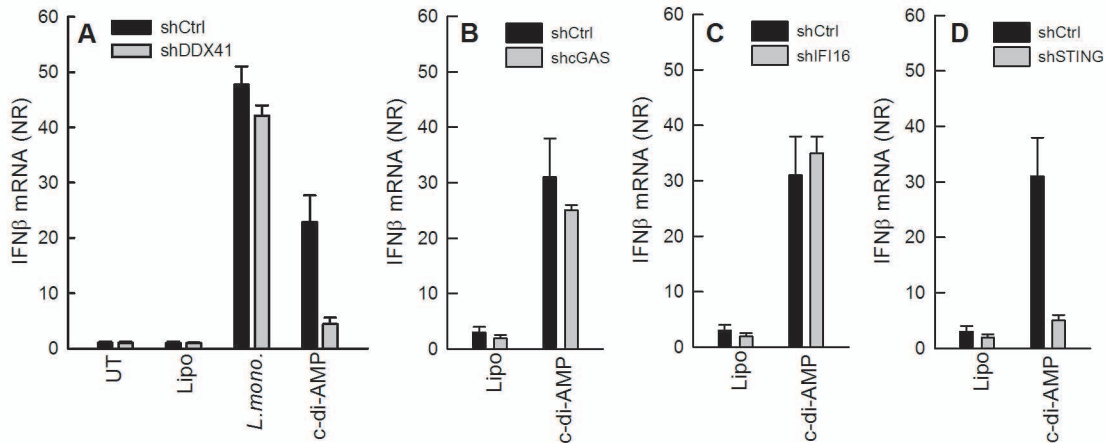


Figure S6



**Supplementary Figure S6. IFN $\beta$  induction by c-di-AMP extracts is dependent on DDX41.**

PMA-differentiated THP1 macrophages transduced with lentivirus encoding control shRNA or a shRNA sequence targeted to (A) DDX41, (B) cGAS, (C) IFI16 or (D) STING were infected with *L. monocytogenes* (MOI 10) or transfected with c-di-AMP (5  $\mu$ M). Cells were lysed 6 hrs post treatment and IFN $\beta$  mRNA expression was determined by RT-qPCR. Data represent mean  $\pm$  SD of duplicates, representative of 2 independent experiments.