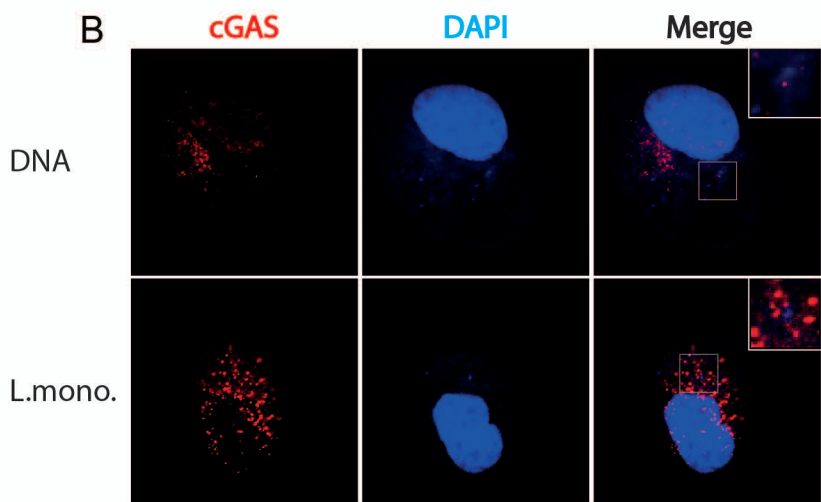
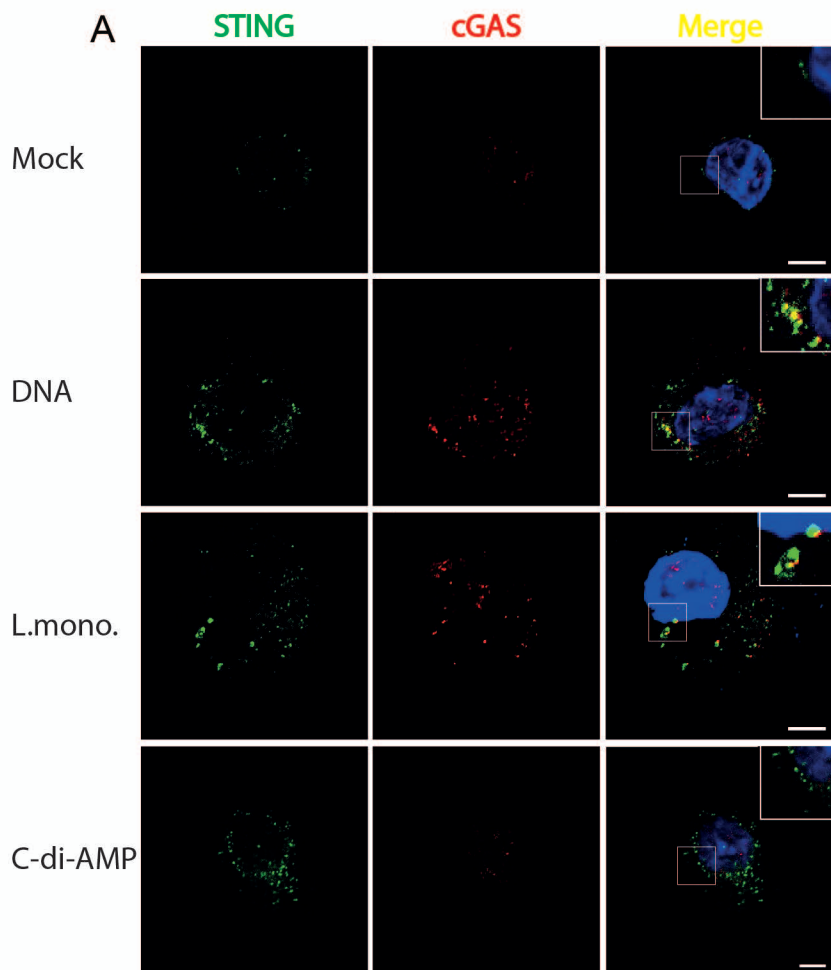


Figure S7



Supplementary Figure S7. cGAS and STING co-localize in the cytoplasm after *L. monocytogenes* infection. PMA-differentiated THP1 macrophages were transfected with 2 µg/ml of dsDNA, 3.6 µM of cyclicdi-AMP or infected with *L. monocytogenes* (strain LO28, MOI25). Four hours post-treatment the cells were fixed and stained with anti-cGAS and anti-STING antibodies. DNA was visualized by DAPI (blue). Scalebar, 5 µm.