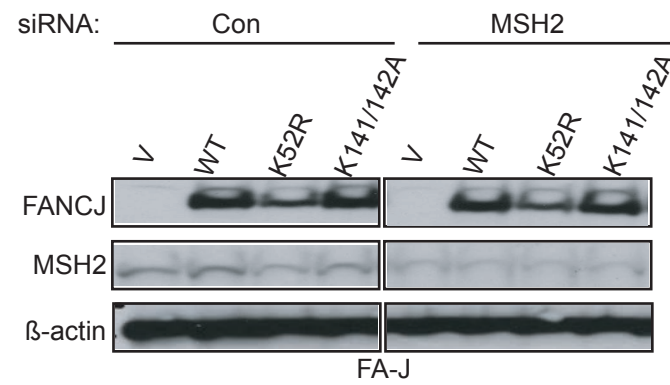
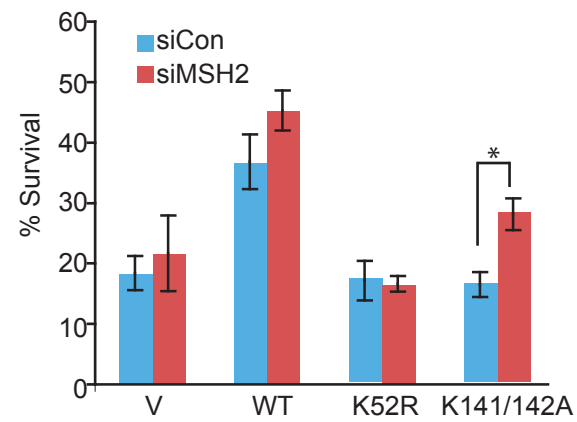


A



B



Supplementary Figure S2. MSH2 does not suppress MMC sensitivity in FA-J cells with inactive helicase FANCD1. (A) Immunoblot analysis of FANCD1 and MSH2 expression in the FA-J stable cell lines treated with indicated siRNAs. (B) Graph shows the percentage of viable cells 5 days after MMC. Where shown, error bars represent standard deviations from three independent experiments. The asterisk (*) represents a p-value < 0.01.