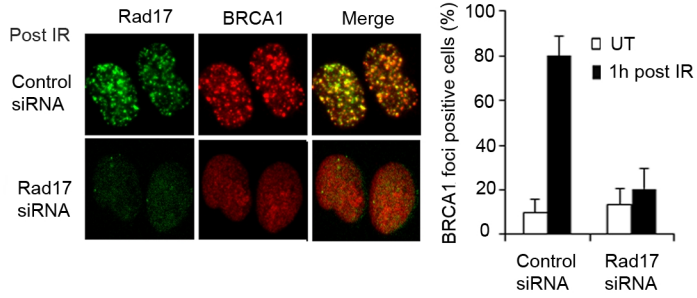
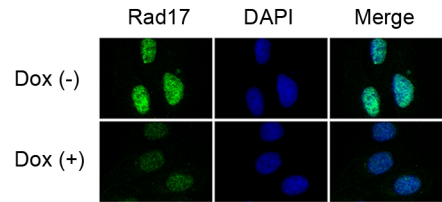


Figure S2

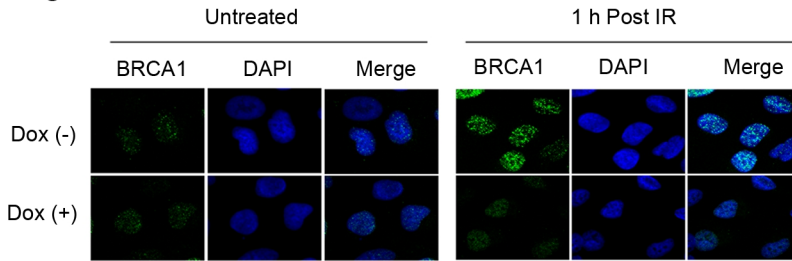
A



B



C



D

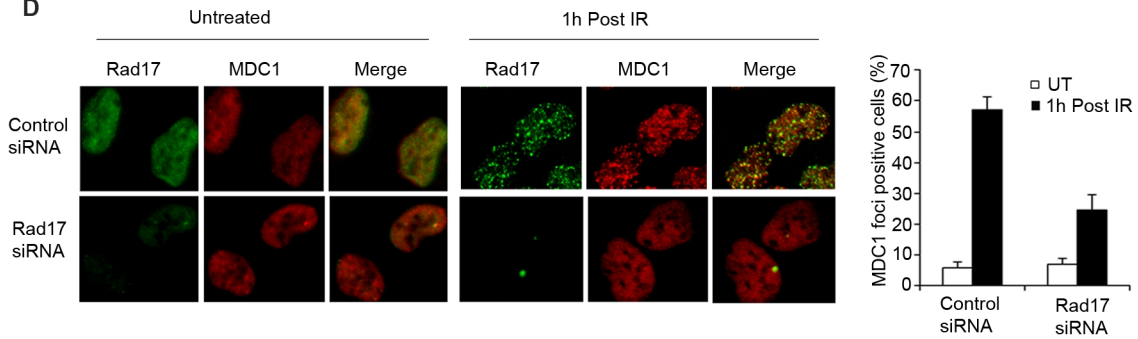


Figure S2 Rad17 is necessary for BRCA1 and MDC1 recruitments to the DSB sites. **(A)** Rad17 is required for BRCA1 recruitment. U2OS cells transfected with indicated siRNA for two days were either left untreated or exposed to 5 Gy of IR. Cells were fixed and stained with anti-Rad17 and anti-BRCA1 as indicated. A cell containing 10 or more foci is considered as a foci positive cell. The percentage of BRCA1 foci positive cells was plotted (mean \pm SD, n=3). **(B)** Stable inducible Rad17 knockdown cells (U2OS) were either untreated or treated with Dox for two days. Cells were fixed and stained with anti-Rad17. **(C)** Rad17 promotes BRCA1 foci formation at DSBs. Stable inducible Rad17 knockdown cells (U2OS) treated with or without Dox for two days was either left untreated or exposed to 5Gy of IR. Cells were fixed 1 hour after IR and stained with anti-BRCA1. **(D)** Rad17 is essential for MDC1 recruitment to DSBs. U2OS cells transfected with control siRNA or Rad17 siRNA were either untreated or exposed to 5Gy of IR. Cells were fixed and stained with anti-Rad17 and anti-MDC1. The percentage of MDC1 foci positive cells was plotted (mean \pm SD, n=3).