

Figure S3

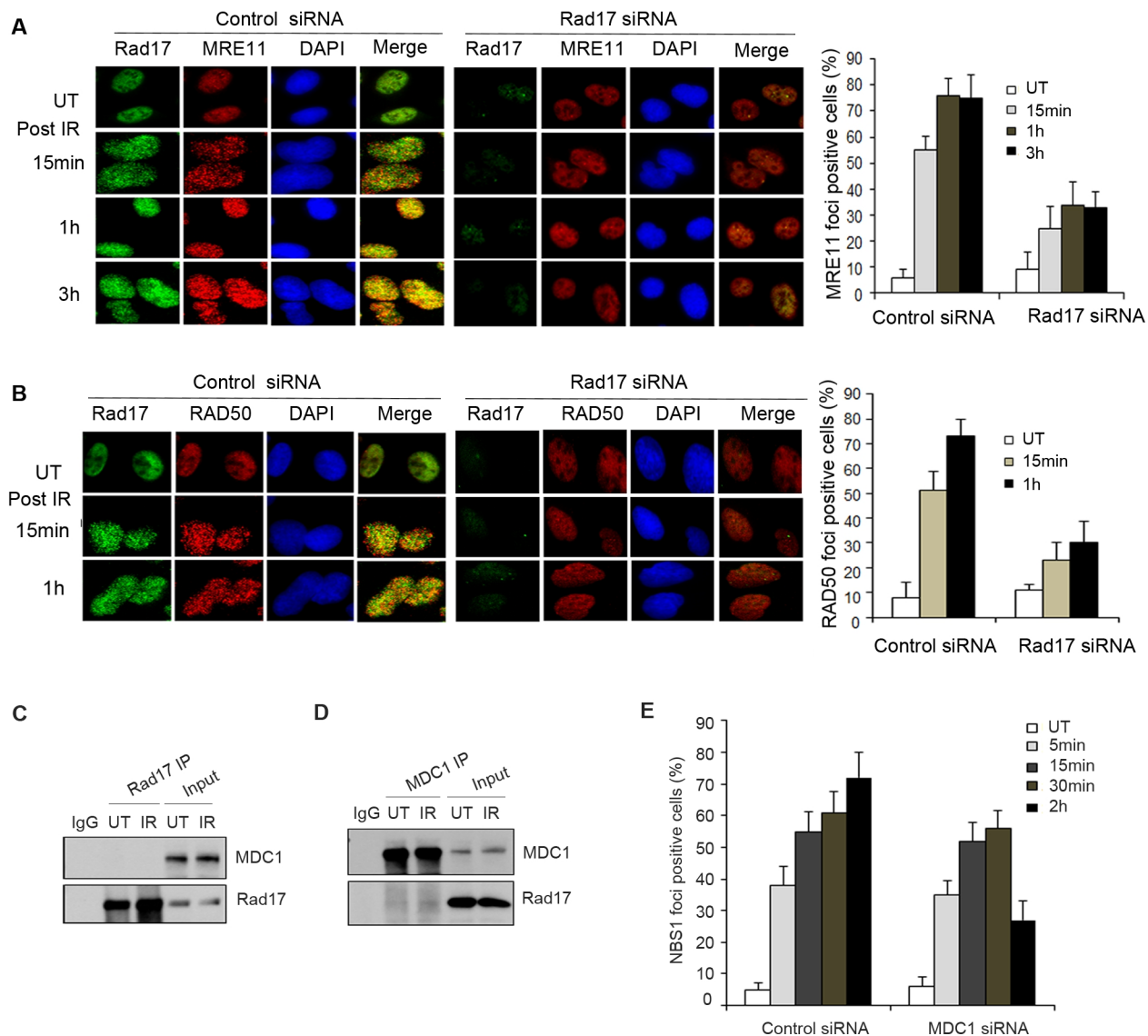


Figure S3 The effects of Rad17 or MDC1 on the recruitments of MRE11 and RAD50 or NBS1 to the DSB sites. **(A and B)** Rad17 is required for MRE11 and RAD50 recruitments to the DSB sites. U2OS cells transfected with the indicated siRNA were either untreated or exposed to 5 Gy of IR. Cells were fixed and stained with anti-Rad17 and anti-MRE11 **(A)** or anti-RAD50 **(B)**. **(C and D)** U2OS cells were either untreated or exposed to 5Gy of IR. Cell lysates were prepared 1 hour after IR. IP experiments with anti-Rad17 **(C)** or anti-MDC1 **(D)** were performed. **(E)** U2OS cells transfected with indicated siRNA were either untreated or exposed to 5Gy of IR. Cells were fixed and stained with anti-NBS1 and anti-MDC1. The percentage of NBS1 foci positive cells was plotted. Error bars present mean \pm SD (n=3) in the figure.