

Figure S8

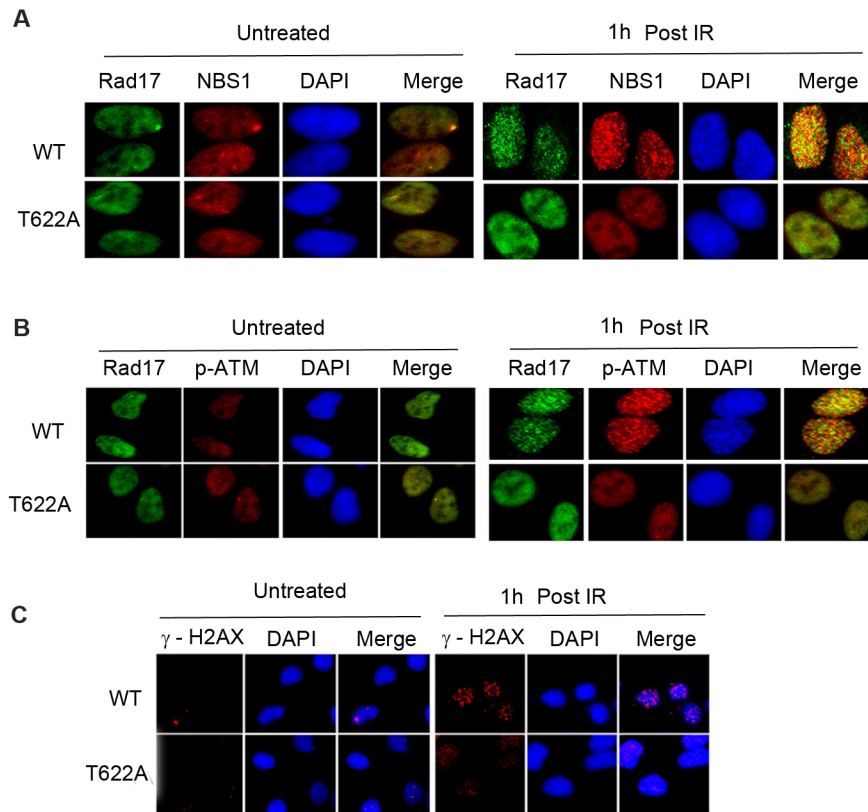


Figure S8 Rad17 phosphorylation at Thr622 is essential for the foci formation of NBS1, p-ATM and γ -H2AX. **(A-C)** Thr622 phosphorylation is required for NBS1, p-ATM and γ -H2AX recruitment to DSBs. Inducible Rad17 knockdown cells (U2OS) stably expressing shRNA-resistant Rad17 WT or Rad17 T622A mutant treated with Dox for two days were either left untreated or exposed to 5 Gy of IR. Cells were fixed and stained with anti-Rad17 and anti-NBS1 **(A)**, anti-p-ATM **(B)** or anti- γ -H2AX **(C)** as indicated.