

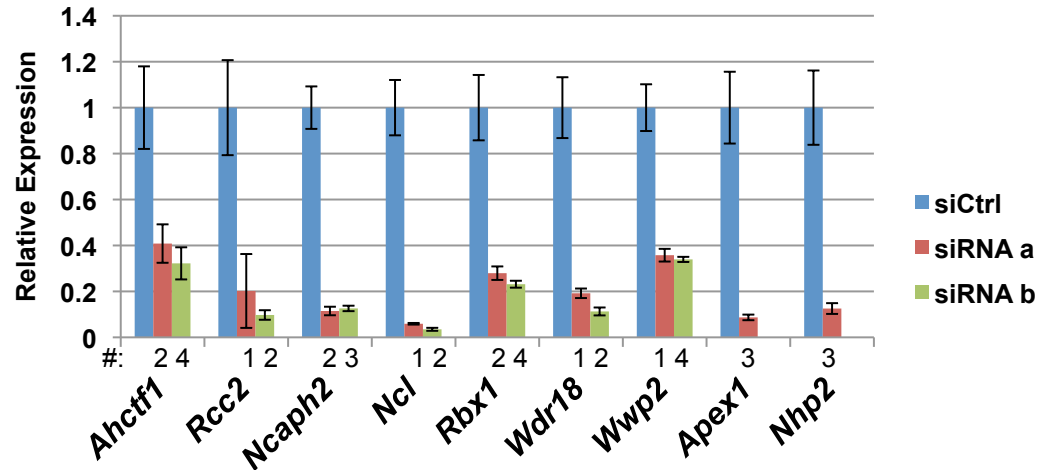
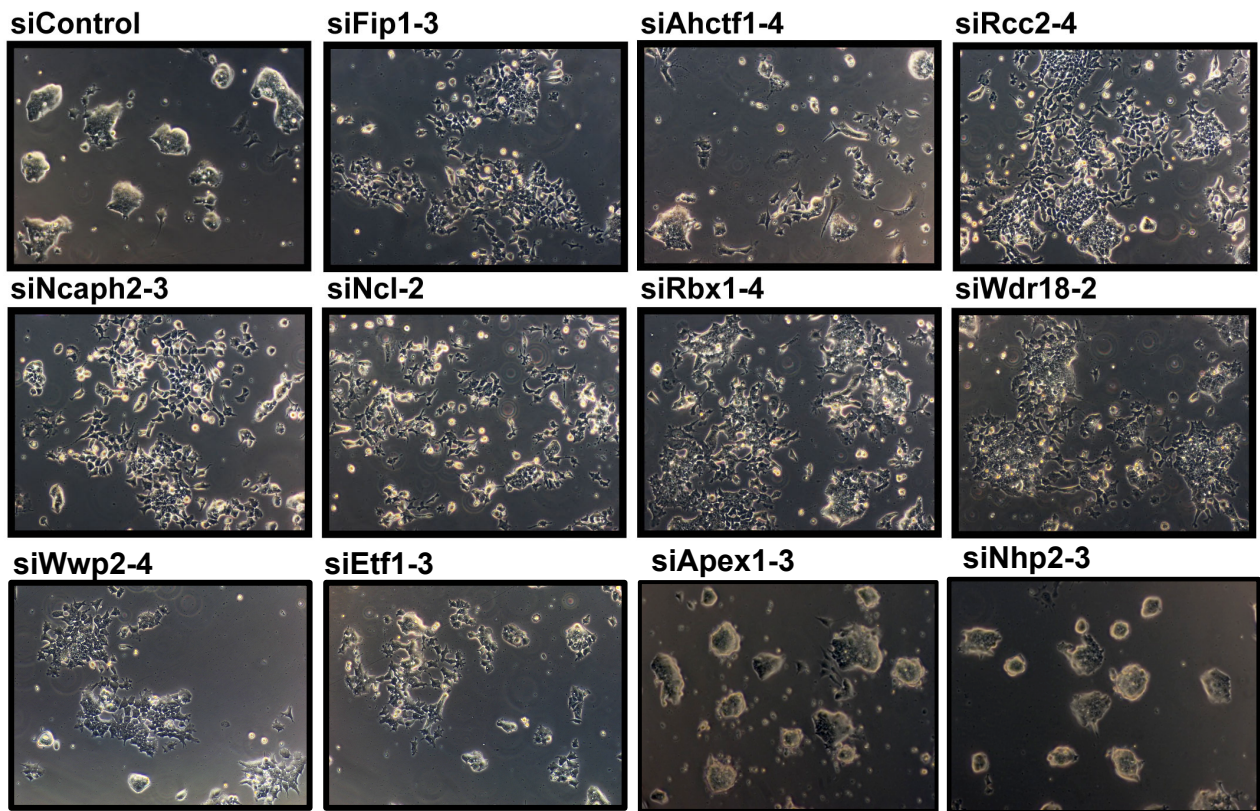
A**B**

Figure S15. The functions of Fip1 APA-targets in ESC self-renewal. (A) RT-qPCR results of specified genes (x axis) are normalized to siCtrl (blue) and plotted as mean \pm SEM (n=3). The specific number of the siRNA is marked on the X axis. **(B)** Phase-contrast images of ESCs transfected with siRNAs against the specified targets (similar to Fig. 3D, but with a different siRNA to rule out off-target effects).