

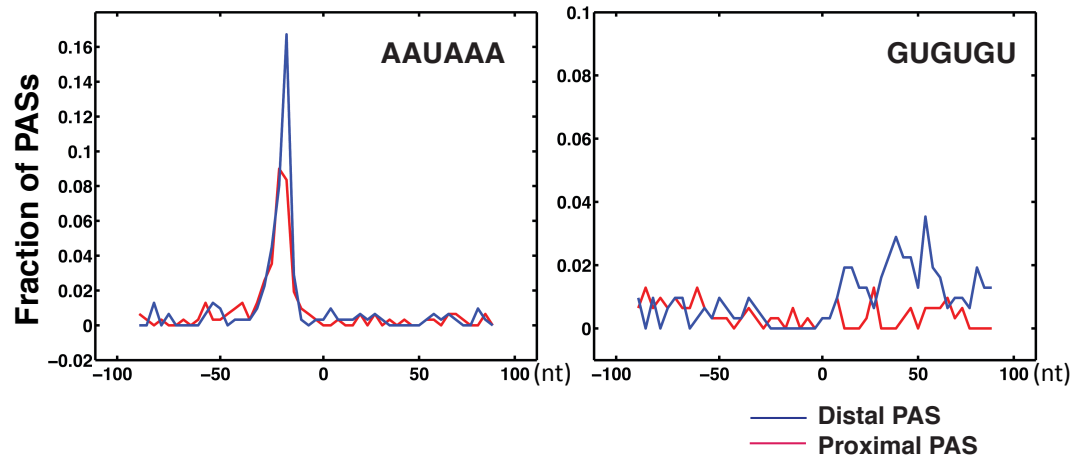
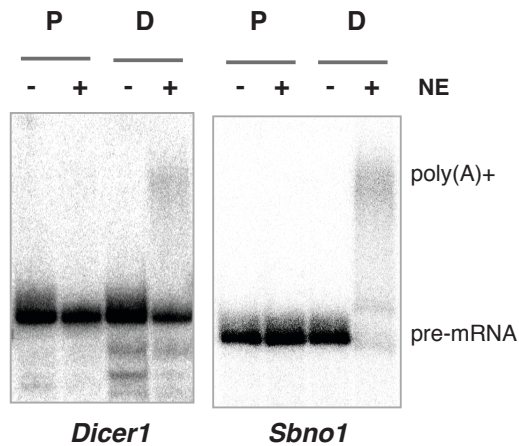
A**B**

Figure S21. Comparison of the proximal and distal poly(A) sites in Fip1 target genes. **(A)** The frequency of AAUAAA and GUGUGU motifs in the proximal (red line) and distal (blue line) poly(A) sites of the 311 Fip1 target genes (PtoD). Position 0 on the x-axis is the cleavage site. **(B)** *In vitro* cleavage/polyadenylation assays with nuclear extract (NE) and the proximal (P) and distal (D) poly(A) sites of two Fip1 target genes, *Dicer1* and *Sbno1*. The pre-mRNA and polyadenylated RNA (polyA⁺) are marked. Our results showed that the distal PASs are more efficiently processed than the proximal PASs.