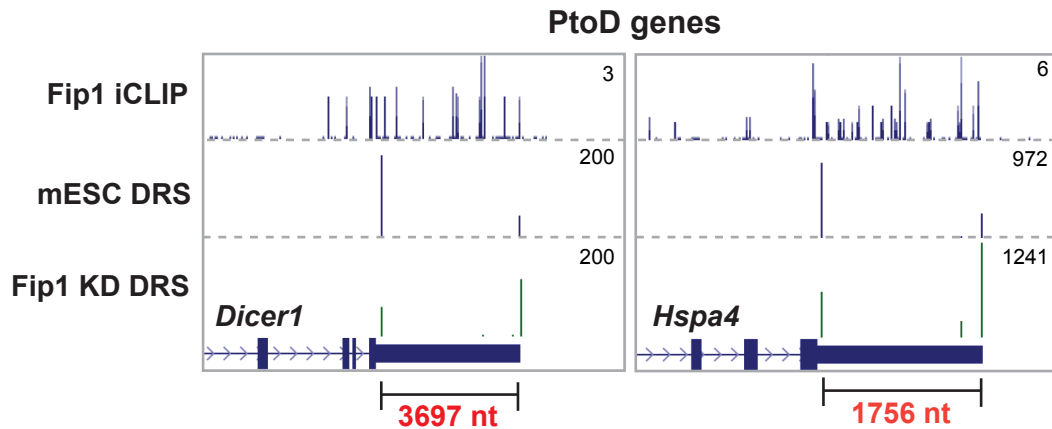
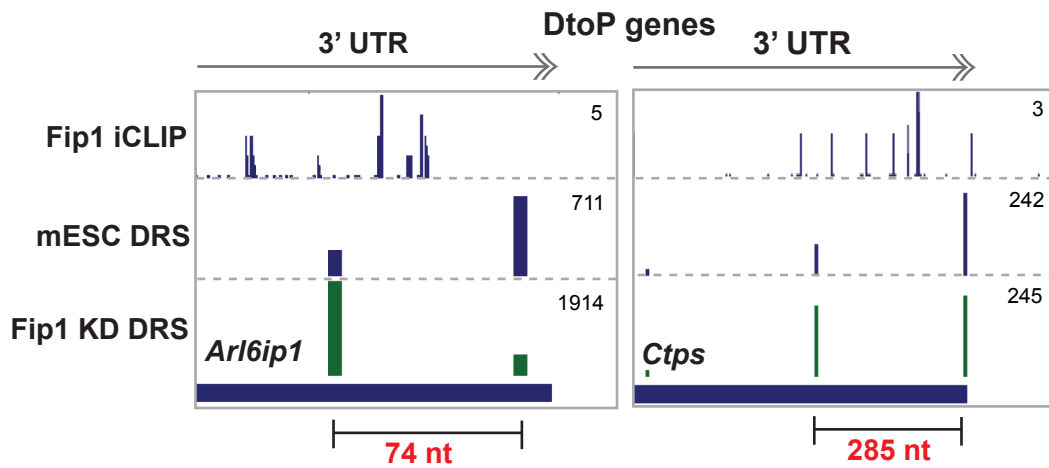


**A**



**B**



**Figure S23. The distance between the proximal and distance poly(A) sites for PtoD and DtoP genes.** UCSC Genome Browser tracks for PtoD (A) or DtoP (B) genes showing the Fip1 iCLIP (top), DRS data for ESC treated with control siRNA (middle), or ESC treated with Fip1 siRNA (Fip1 KD). The distance between the two poly(A) sites are marked on the bottom.