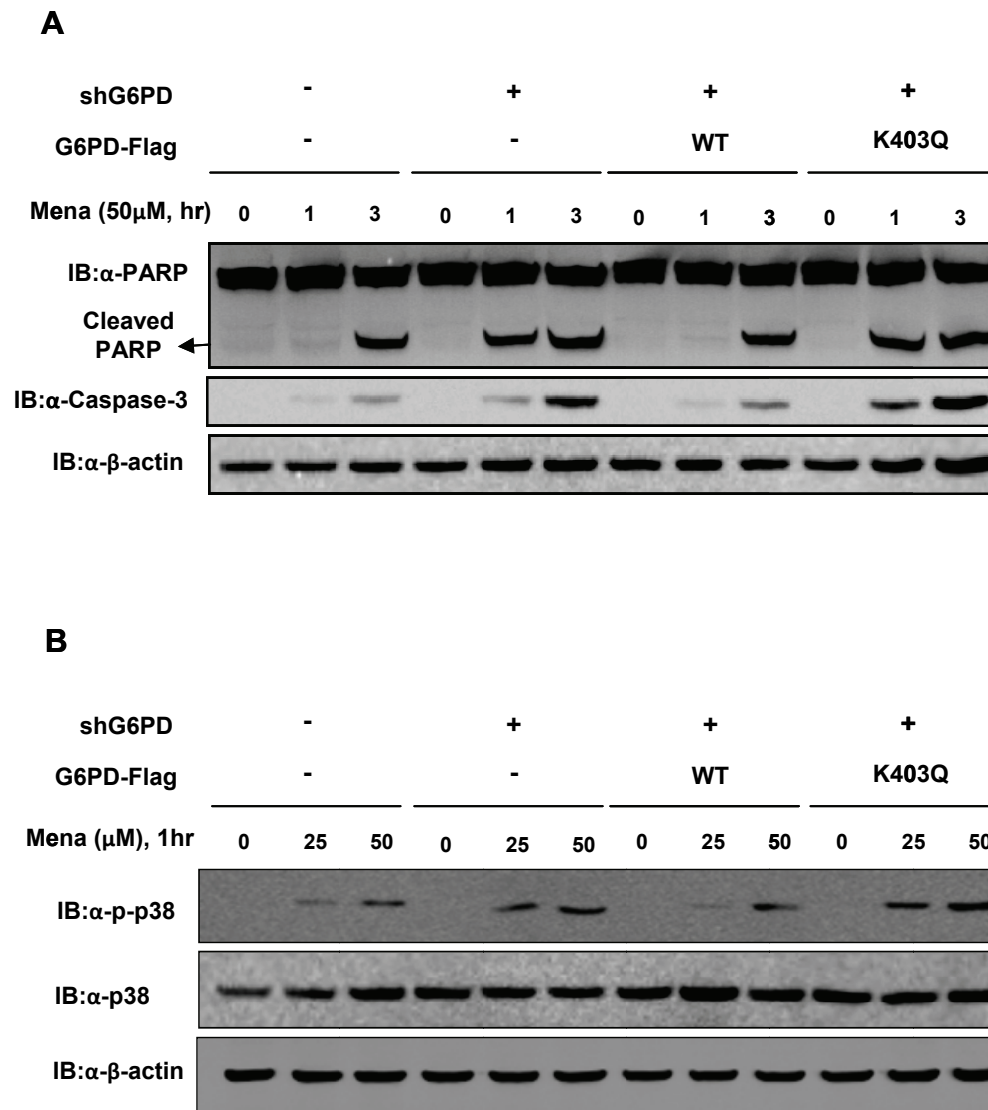


Wang et al. Supplementary Fig.11



Supplementary Fig.11 Determination of ROS-related signaling pathways

in *G6PD* knock-down and rescue cells after menadione treatment

G6PD knock-down cells or these cells rescued by WT *G6PD* or the K403Q mutant were treated with menadione (50 μ M) for the indicated periods. The expression levels of candidate proteins involved in ROS-related signaling pathways, including PARP, Caspase-3, and p38 MAPK phosphorylation were determined by western blot analysis.