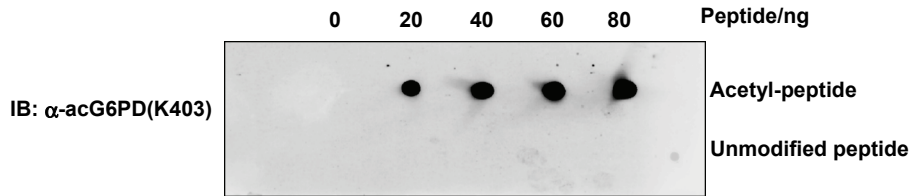
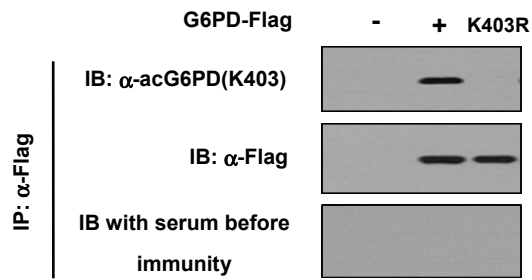


Wang et al. Supplementary Fig.7

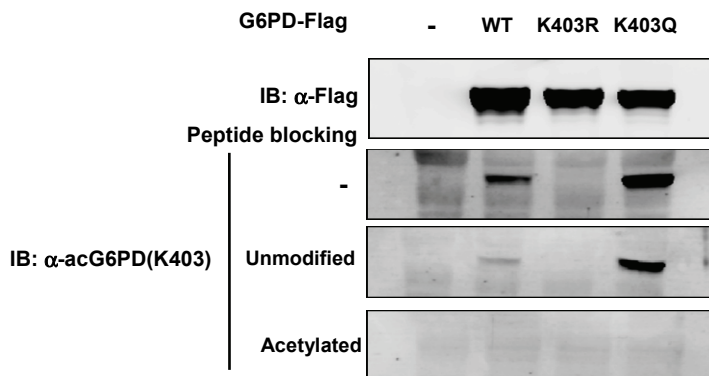
A



B



C



Supplementary Fig.7 Characterization of the specificity of the α -acG6PD(K403) antibody

(A) Different amounts of acetyl-K403 peptide or unmodified peptide were spotted on nitrocellulose membrane, and the antibody specificity was determined by dot-blot assay.

(B) Immunoprecipitated Flag-tagged wild-type G6PD, but not its K403R mutant, was recognized by the α -acG6PD(K403) antibody, but not by serum before immunity.

(C) The recombinant K403-acetylated K403 peptide, but not the unmodified peptide, could compete for binding to acetylated G6PD.