

SUPPLEMENTARY DATA

Fig S1. Production and purification of recombinant OsXTH19, OsXTH20 and OsXTH11. Lane 1, 60% (w/v) ammonium sulfate precipitate of the culture medium of *P. pastoris*, which had been transformed with pPICZaA-OsXTH19, -OsXTH20, or -OsXTH11 and induced with methanol. Lane 2, OsXTH following the first ion-exchange chromatography. Lane 3, OsXTH following the second ion-exchange chromatography. Lane 4, OsXTH following size-exclusion chromatography. Proteins were separated on a SDS-polyacrylamide gel and stained with Coomassie Blue.

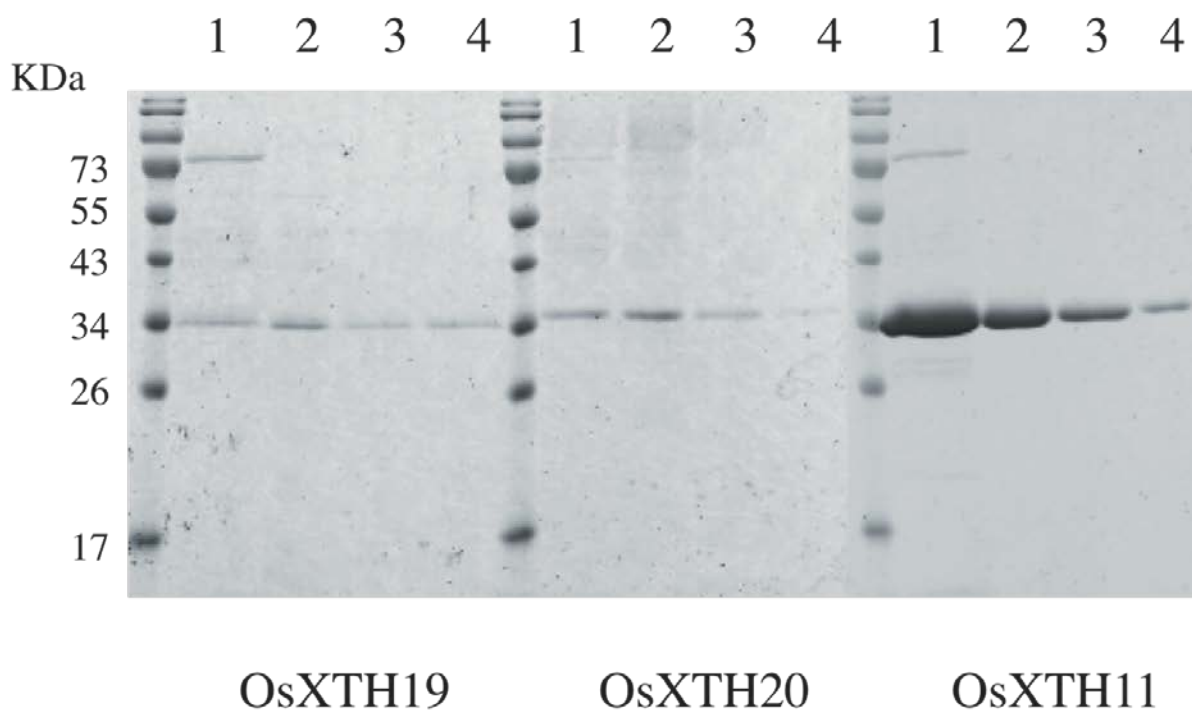


Fig. S2. Photographs of the main shoot of wild type (WT) and transgenic rice plants (R3, R4, R10, C15, C18) harvested at maturity. Scale bars = 15 cm. For detail, see legend to Fig. 5 in the text.

