

*phoP* (s8)

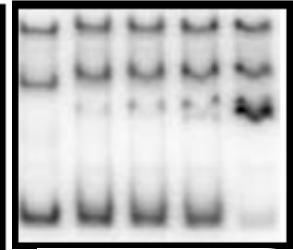
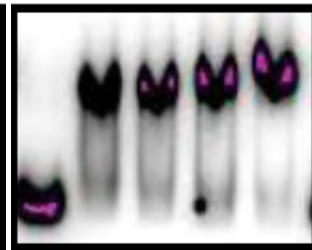
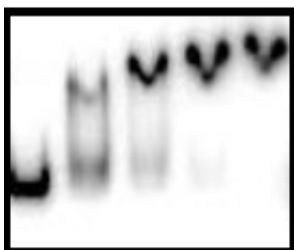
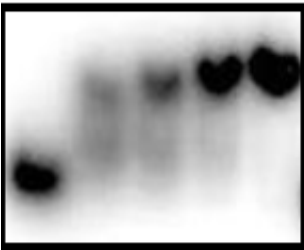
*pcgL* (s27)

*pcgL* (s62)

*virK* (s17)

*virK* (s15)

*pagK* (s26)



- 16 20 24 28

- 20 28 36 50

- 28 45 60

- 20 36 50 65

- 20 24 28 36

- 40 50 60 100

*pagK* (s65)

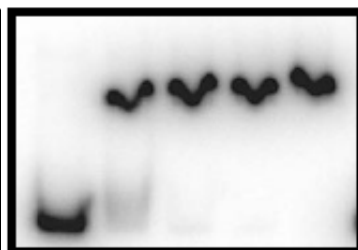
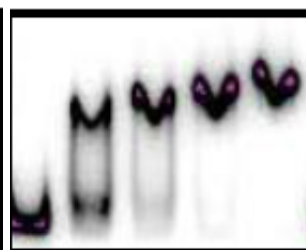
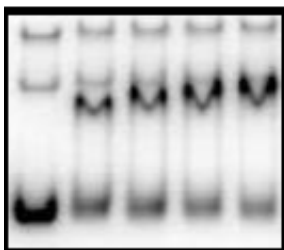
*yrbL* (s22)

*mgtA* (s33)

*rstA* (s11)

*slyB* (s61)

*ompX* (s2)



- 28 45 60

- 16 20 24 28

- 20 24 28 36

- 20 28 36 50

- 20 28 36 50

- 20 28 36 50

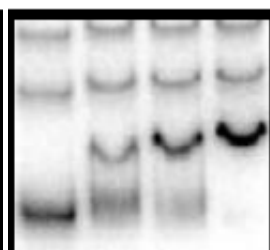
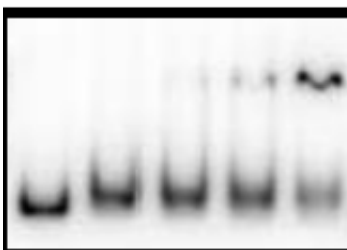
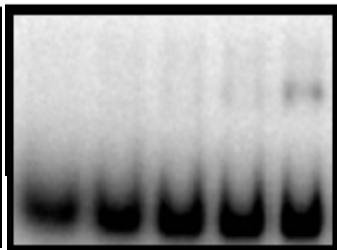
*yobG* (s21)

*yobG* (s70)

*mgtC* (s34)

*mgtC* (s35)

*mgtC* (s36)



- 20 36 50 65

- 50 70 80 100

- 30 40 50 60

- 30 40 50 60

- 48 60 100

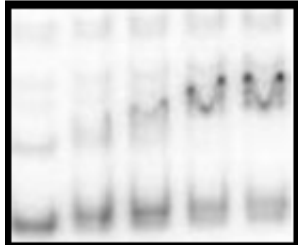
*ugtL* (s28)

*ugtL* (s14)

*pagC* (s3)

*pagC* (s4)

*pagP* (s6)



- 20 30 50 65

- 28 36 50 65

- 20 24 28 36

- 20 24 28 36

- 14 18 24 30

*pagP* (s72)

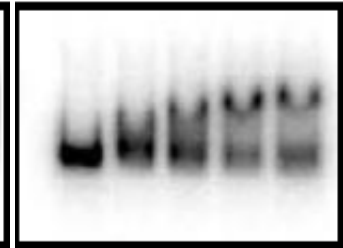
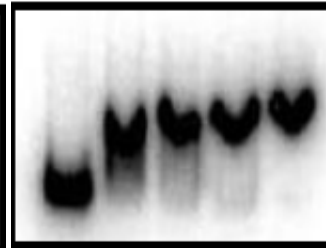
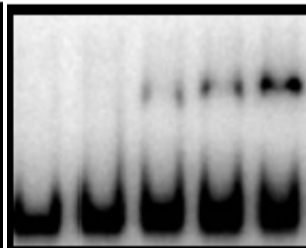
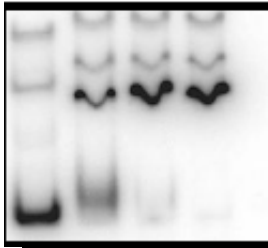
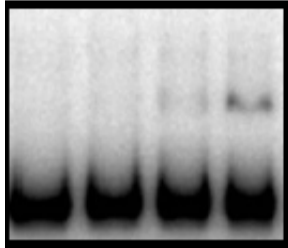
*pgtE* (s7)

*pgtE* (s63)

*pagD* (s74)

*pagD* (s5)

*mig-14* (s38)



- 40 70 90

- 40 50 60 100

- 28 45 60

- 40 60 70 90

- 36 50 60 100

- 28 36 48 50

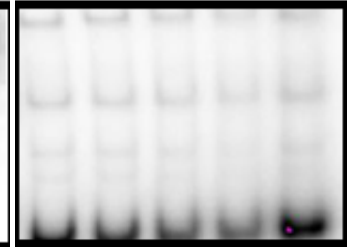
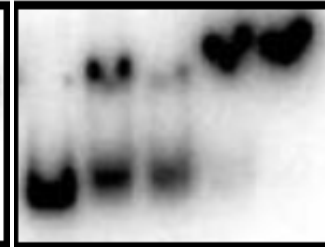
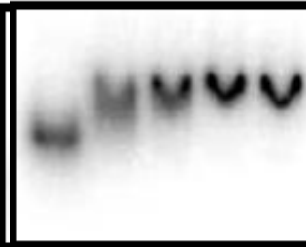
*mig-14* (s61)

*pipD* (s66)

*pipD* (s9)

*pmrD* (s10)

*zwil* (s30)



- 20 28 36 50

- 60 90 120 180

- 28 36 48 50

- 40 50 60 100

- 20 40 60 100

*ybjX (s18)*

*ybjX (s20)*



- 20 28 36 50 - 20 24 28 38