

Figure S1

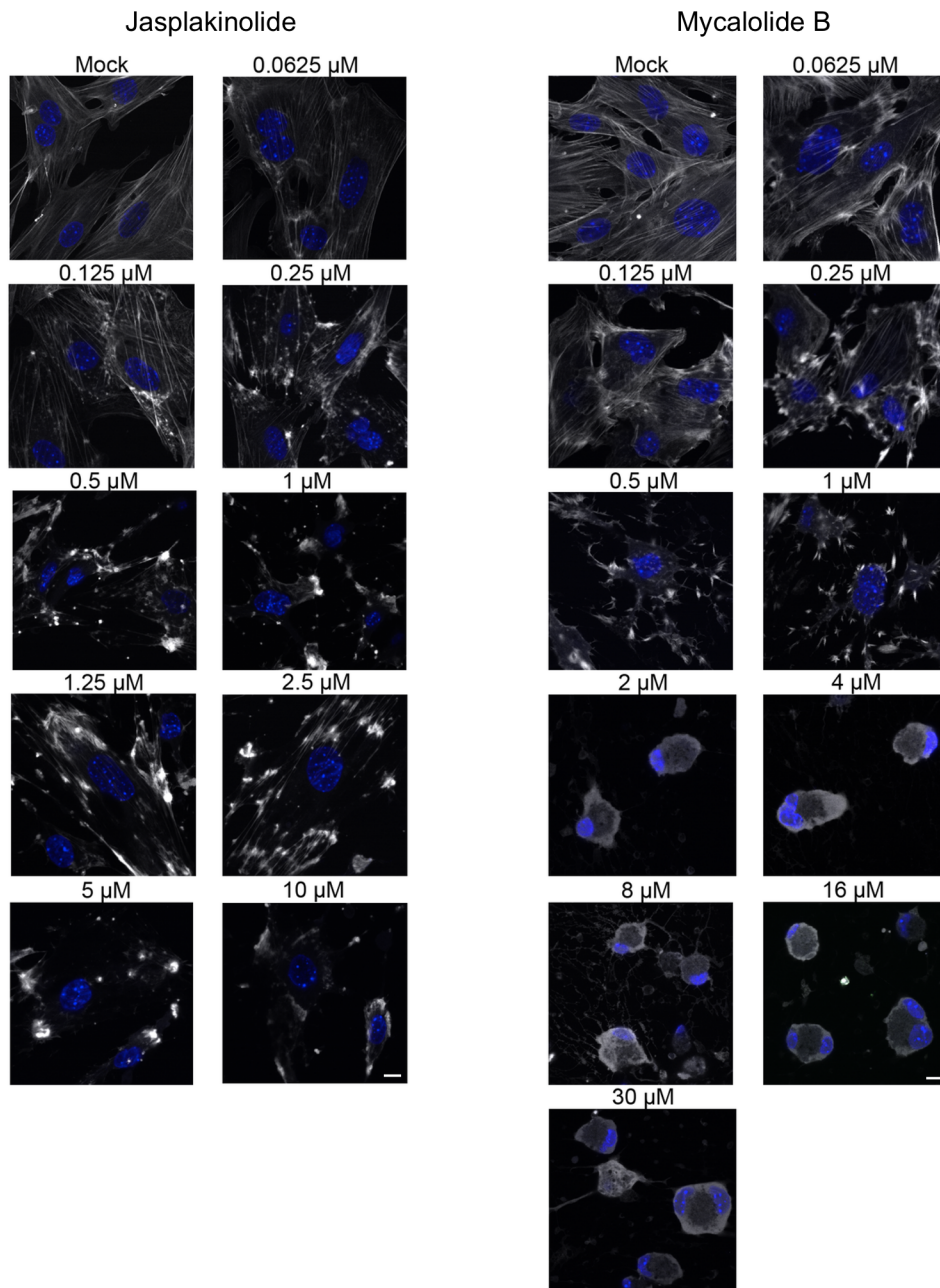


Figure S1: Effect of varying concentrations of Jasplakinolide and Mycalolide-B on F-actin

MEF cells constitutively expressing Lifeact-EGFP (white) were treated with varying concentrations of Jasplakinolide and Mycalolide-B for 1h, fixed, counterstained with DAPI (blue) and imaged by confocal laser scanning microscopy in one confocal section. Scale bars indicate 10 μm .