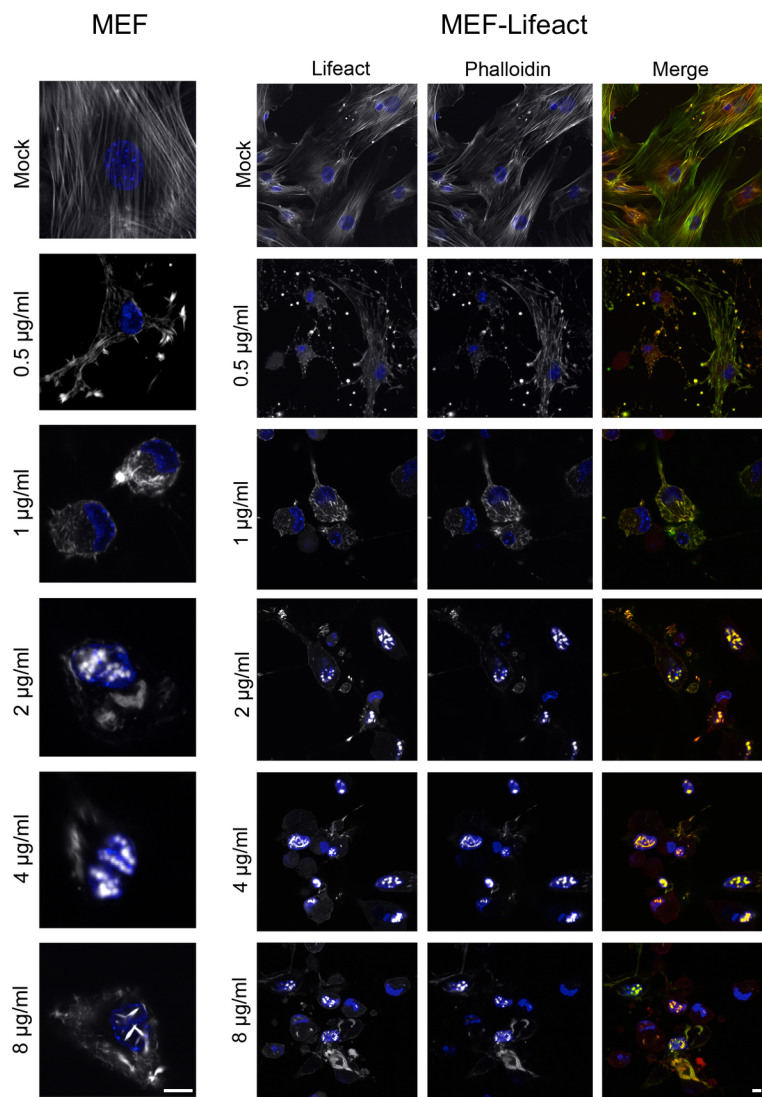


Figure S3

A

Latrunculin A



B

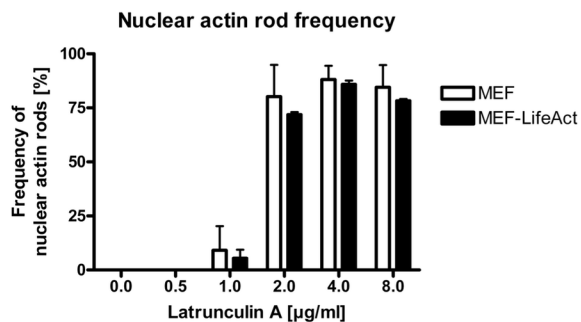


Figure S3: Effect of varying concentrations of DMSO on F-actin

(A) MEF cells (MEF) or MEF cells constitutively expressing Lifeact-EGFP (MEF-Lifeact) were treated with varying concentrations of Latrunculin A for 1h, fixed, and stained with fluorescently labeled Phalloidin as well as with DAPI (blue) and imaged by confocal laser scanning microscopy in one confocal section. In pictures showing merged channels Lifeact is coded green and Phalloidin is coded red while DAPI is coded in blue. (B) MEF cells as well as MEF cells expressing Lifeact were treated with varying concentrations of Latrunculin A as above and the frequency of nuclear actin rod appearance was counted. 2µg/ml LatA is corresponding to 4.7 µM.