

A

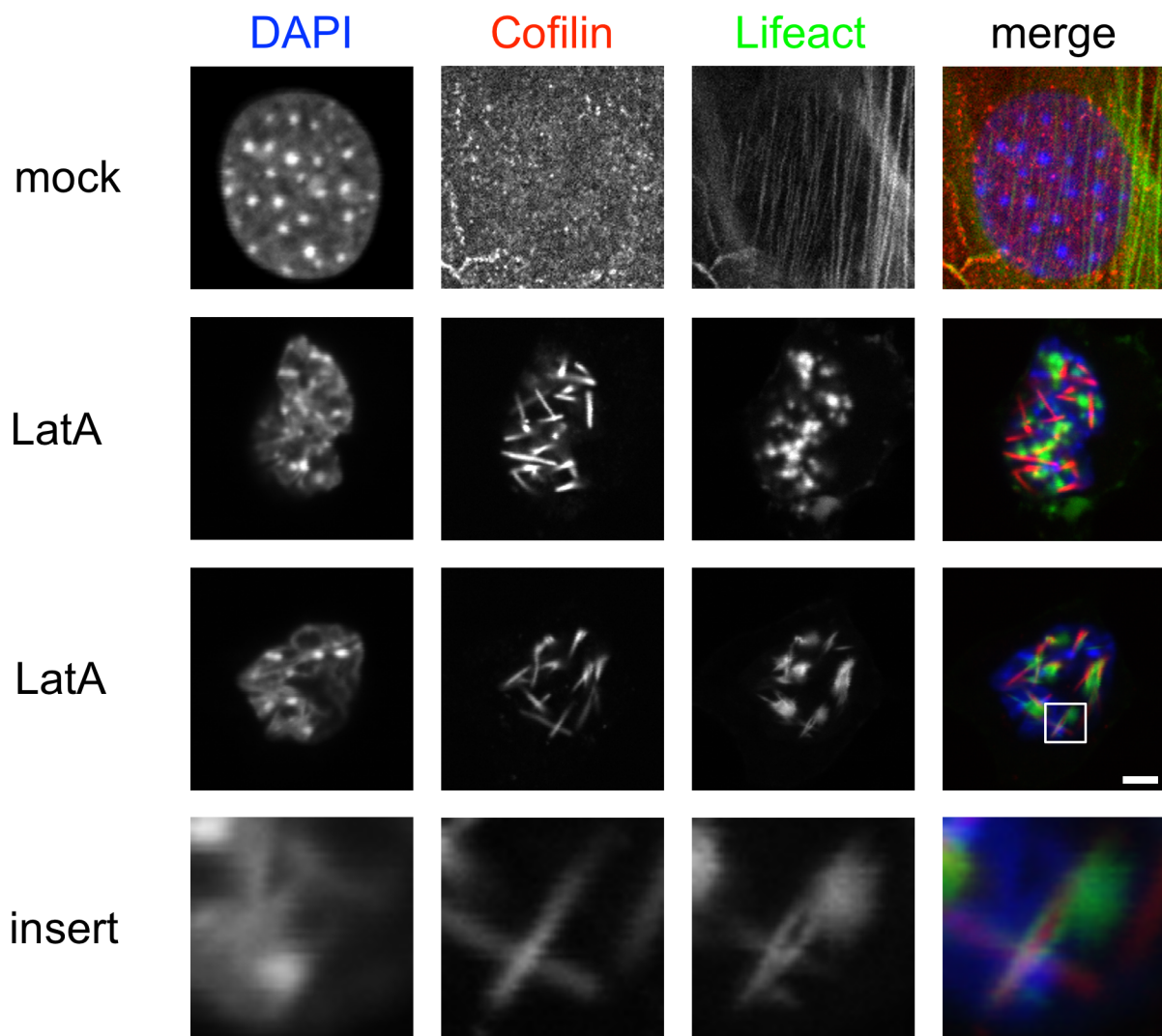


Figure S4: Two different kinds of actin rods are induced by LatA

MEF cells constitutively expressing Lifect-EGFP were mock treated or incubated for 1 h with $4.7 \mu\text{M}$ ($2 \mu\text{g/ml}$) LatA, fixed with PFA and then extracted with ice-cold Methanol. Afterwards cells were stained with a polyclonal antiserum directed against Cofilin and counterstained with DAPI. Images were acquired by laser scanning confocal microscopy in one confocal section. The scale bar indicates $5 \mu\text{m}$.