

Figure S5

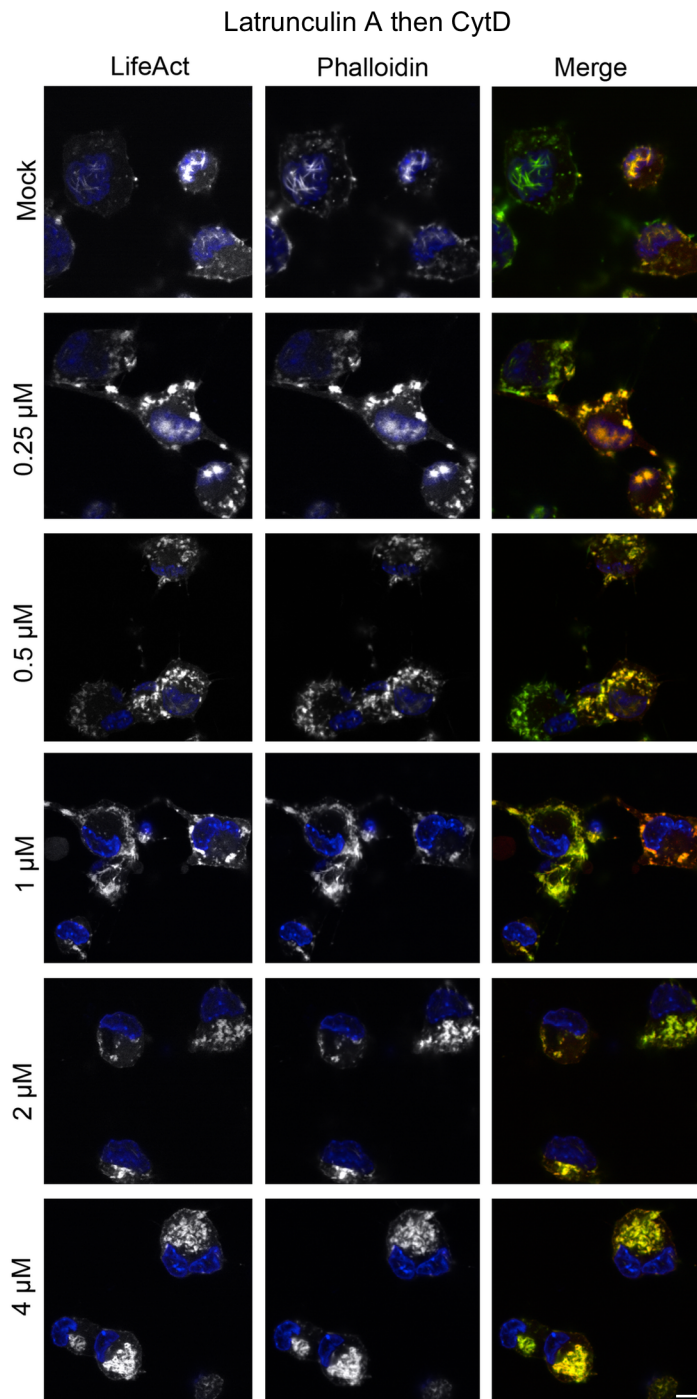


Figure S5: Cytochalasin D can revert actin rod formation by LatA

MEF cells constitutively expressing Lifeact-EGFP (white) were treated with 4.7 μ M (2 μ g/ml) Latrunculin A for 1 h. Then varying concentrations of Cytochalasin D were added for 1h and cells were fixed, counterstained with DAPI (blue) and imaged by confocal laser scanning microscopy in one confocal section. The scale bar indicates 10 μ m.