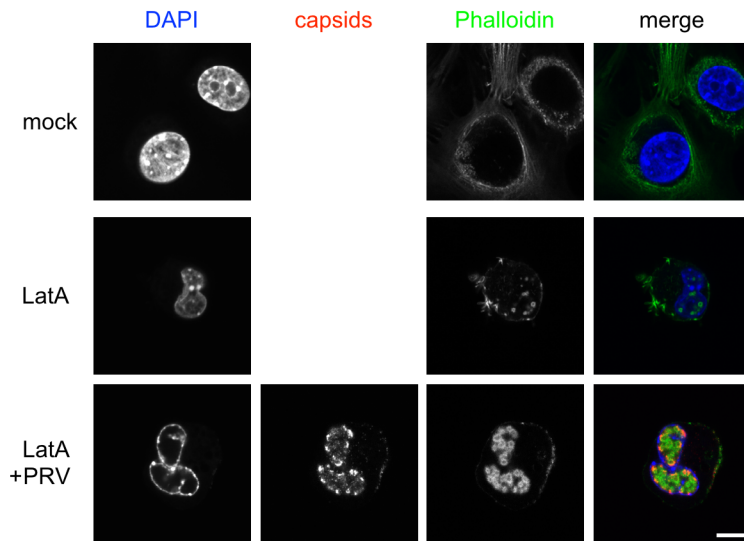


# Figure S6



**Figure S6: LatA induces actin rods in NIH/3T3 cells**

NIH/3T3 cells were mock infected or infected with PRV mRFP-VP26. 4 hpi cells were incubated for 1 h with 4.7  $\mu$ M LatA. Cells were then fixed and stained with fluorescently labeled Phalloidin as well as DAPI and imaged by confocal laser scanning microscopy in one confocal section. Scale bar indicates 10  $\mu$ m.