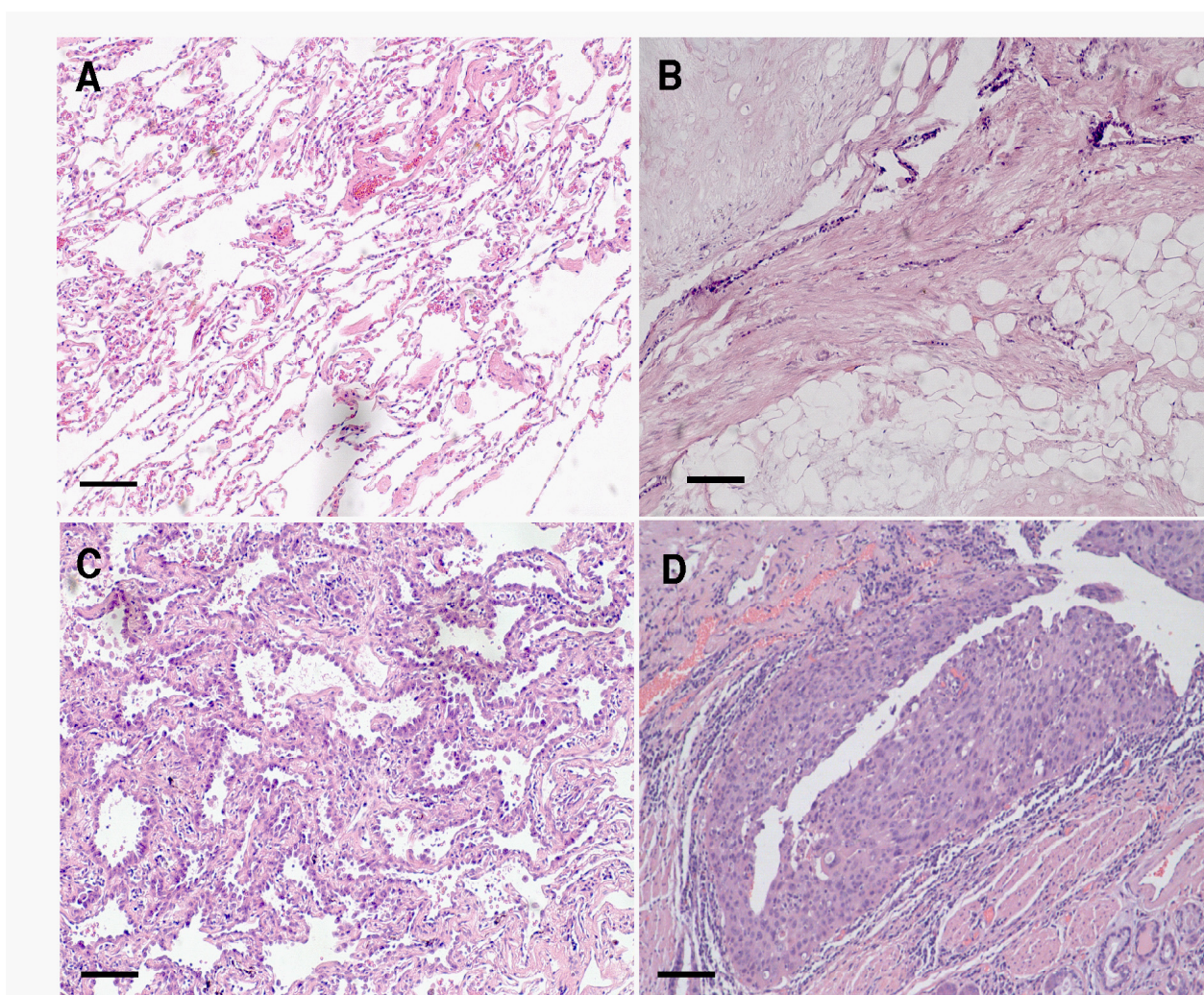


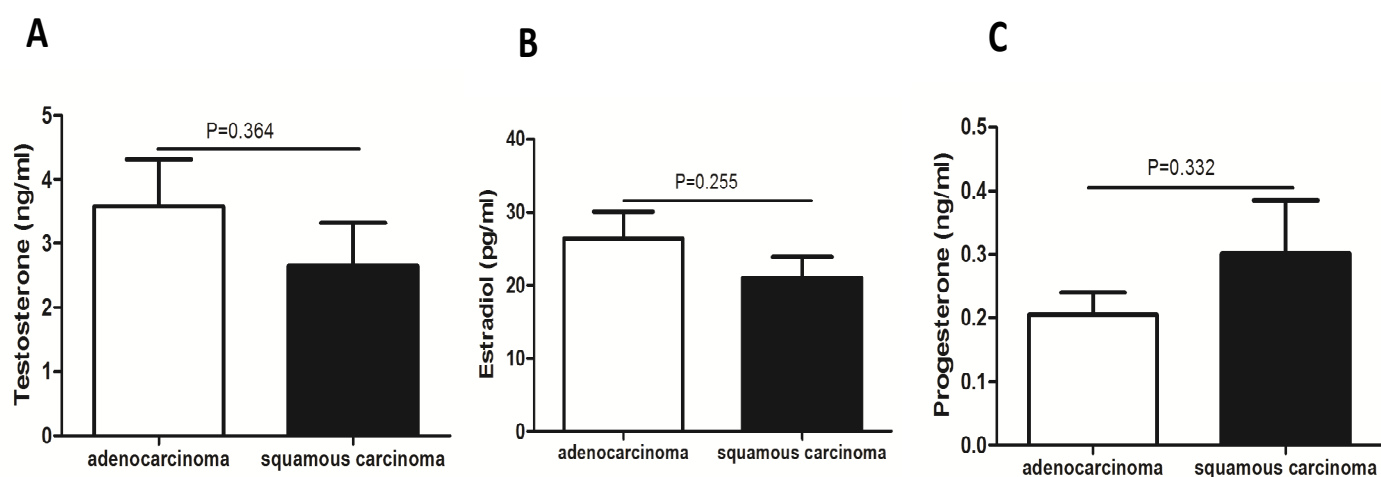
Supplementary Figure 1. Representative microscopic images of human patients with SPNs. (A) Lung paraneoplastic tissue; (B) Benign solitary pulmonary nodule; (C) Lung adenocarcinoma; (D) Lung squamous cell carcinoma. Lung tissues were resected by surgery from patients and fixed in 10% formalin and embedded in paraffin wax. Then blocks were sectioned into 5 μm thickness and stained with hematoxylin and eosin (H&E) using a standard protocol. Scale bars: 100 μm .

Supplementary Figure 1



Supplementary Figure 2. Serum levels of sex hormones were similar in two types of lung cancer. There was no significant difference in the levels of (A) testosterone (B) estradiol (C) progesterone in patients with lung adenocarcinoma and patients with lung squamous carcinoma.

Supplementary Figure 2



Supplementary Table 1. Abnormal elevated serum levels of CEA in 8 male patients with lung adenocarcinoma

Case	Age (years)	Smoking status	Cancer stage	CEA (ng/ml)	Normal range (<5.0 ng/ml)
Case1	54	Current	I	25.4	
Case1	48	Current	I	47.3	
Case3	71	Former	I	35.8	
Case4	67	Current	I	48.2	
Case5	44	Current	I	8.2	
Case6	49	Current	I	18.6	
Case7	58	Current	I	14.2	
Case8	65	Current	I	31.3	