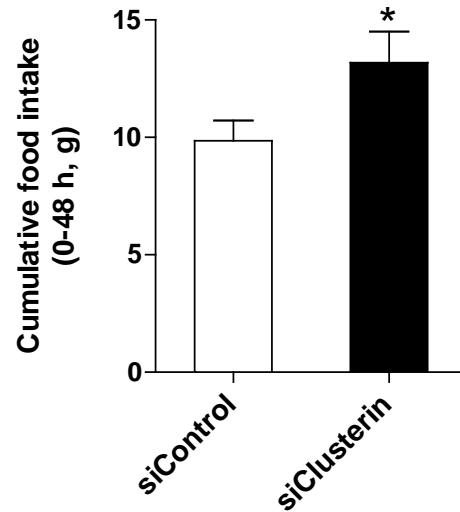


## Supplementary Fig S2



The effects of hypothalamic clusterin knockdown in ob/ob mice on food intake (n = 5). Either clusterin siRNA (siClusterin) or non-targeting control siRNA (siControl, 0.5 nmol each side) were injected into bilateral mediobasal hypothalamus of ob/ob mice. Food intake was monitored for 48 h after siRNA injection. Data are the mean  $\pm$  SEM. Comparison between groups were analyzed using the Student's t-test. \* $P < 0.05$  vs. siControl